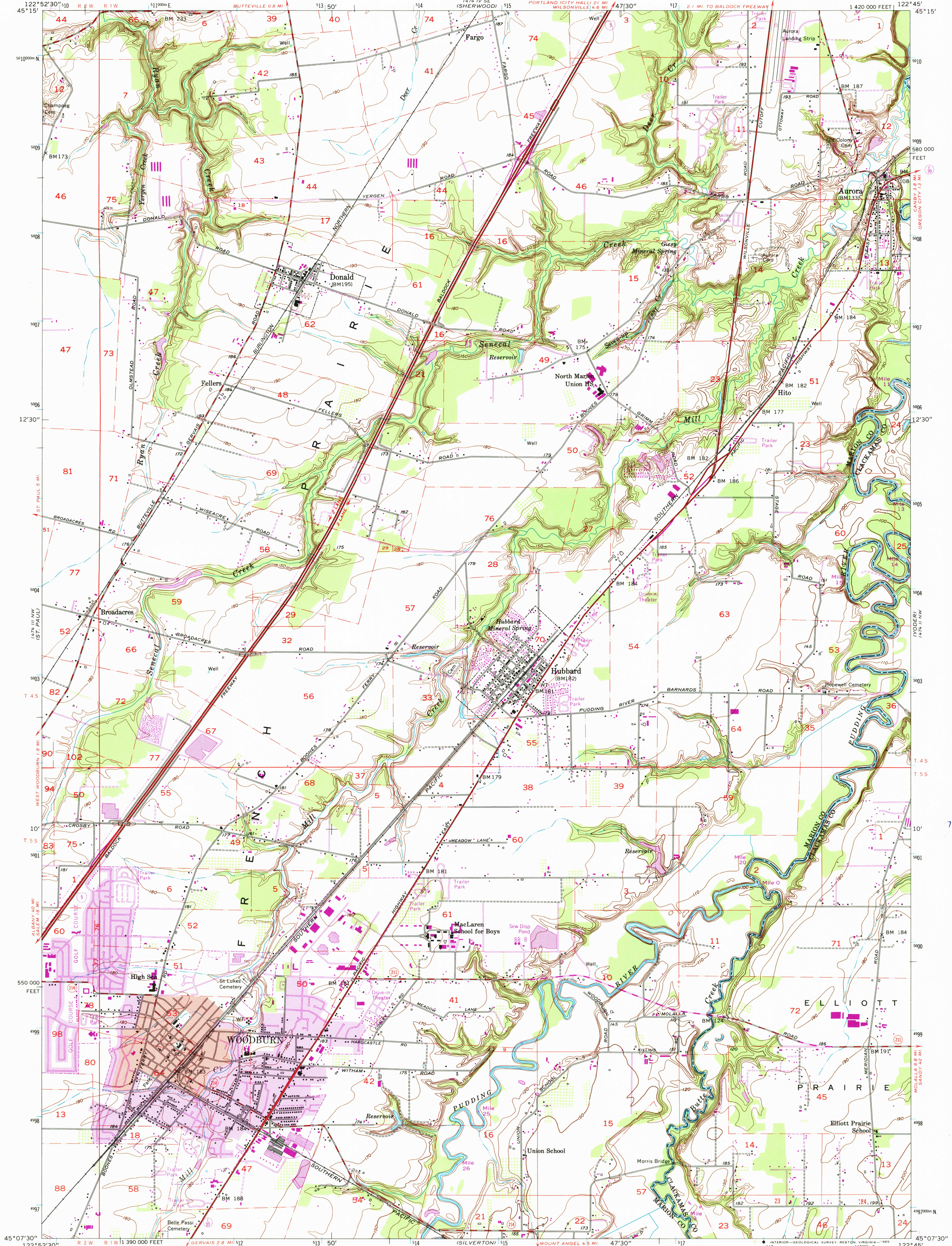
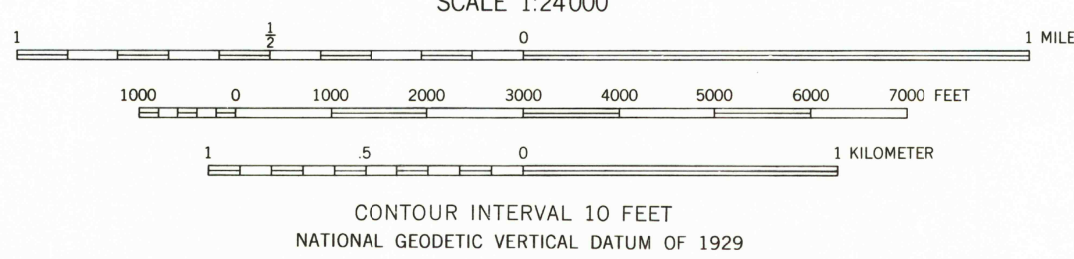
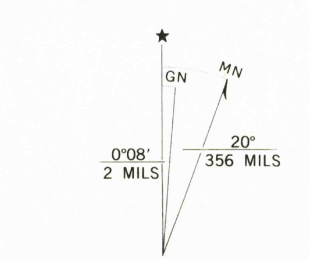


UNITED STATES  
DEPARTMENT OF THE INTERIOR  
GEOLOGICAL SURVEY

WOODBURN QUADRANGLE  
OREGON  
7.5 MINUTE SERIES (TOPOGRAPHIC)



Mapped, edited, and published by the Geological Survey  
Control by USGS, USC&GS, USCE, and State of Oregon  
Topography from aerial photographs by Kelsh plotter  
and by planetable surveys 1956. Aerial photographs taken 1954  
Polyconic projection. 1927 North American datum  
10,000-foot grid based on Oregon coordinate system,  
north zone  
1000-meter Universal Transverse Mercator grid ticks,  
zone 10, shown in blue  
Red tint indicates areas in which only  
landmark buildings are shown  
To place on the predicted North American Datum 1983,  
move the projection lines 23 meters north and  
95 meters east as shown by dashed corner ticks



ROAD CLASSIFICATION  
Heavy-duty ——— Light-duty ———  
Medium-duty ——— Unimproved dirt ———  
U.S. Route ——— State Route ———  
Interstate Route ———

WOODBURN, OREG.  
45122-B7-TF-024  
1956  
PHOTOREVISED 1985  
DMA 1474 III NE-SERIES V892

USGS NMD HISTORICAL MAP  
MAR 14 1986  
REC'D FILE COPY