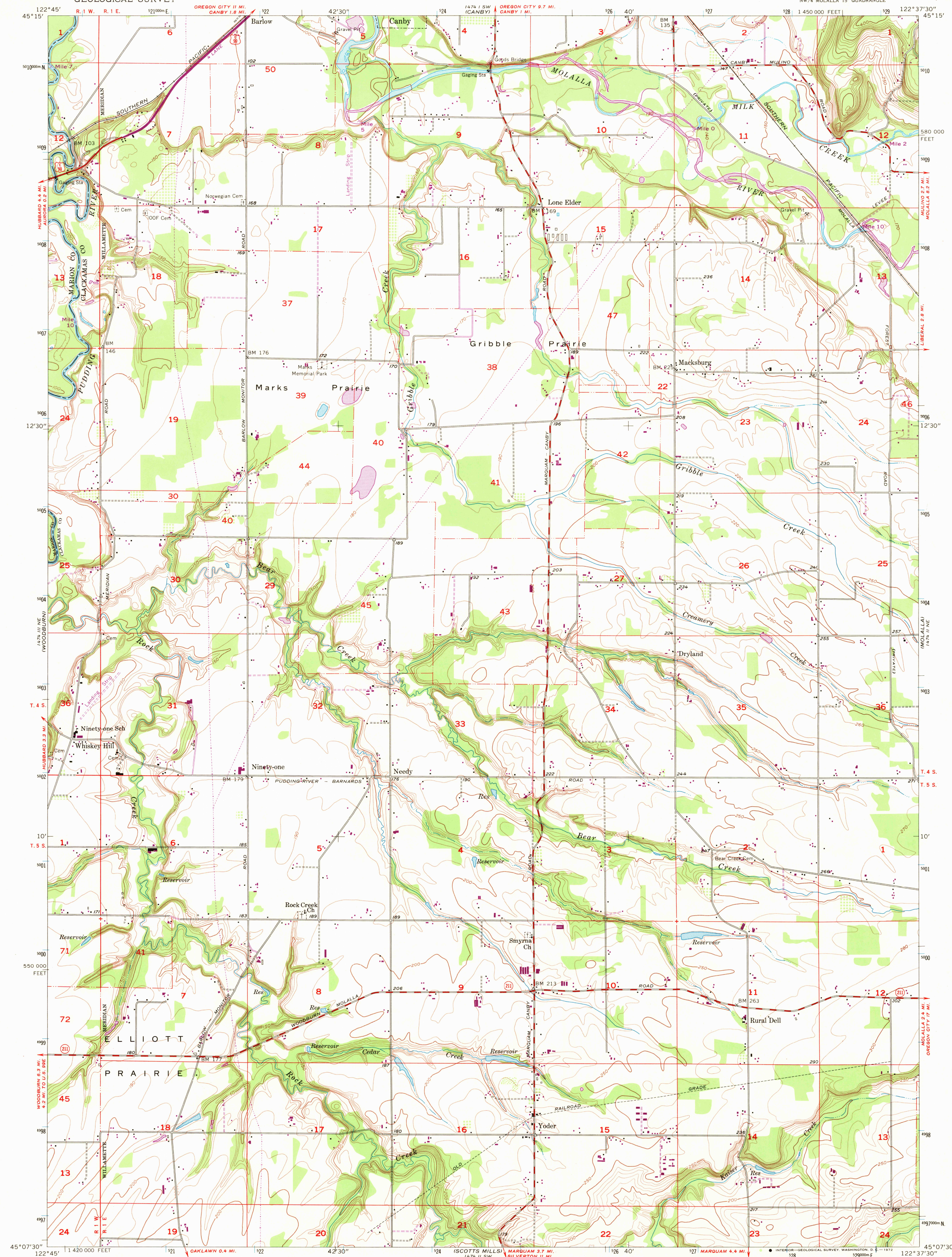


UNITED STATES  
DEPARTMENT OF THE INTERIOR  
GEOLOGICAL SURVEY

YODER QUADRANGLE  
OREGON  
7.5 MINUTE SERIES (TOPOGRAPHIC)  
NW/4 MOLALLA 15' QUADRANGLE



Mapped, edited, and published by the Geological Survey  
Control by USGS, USC&GS, USCE, and State of Oregon  
Topography from aerial photographs by Kelsh plotter  
Aerial photographs taken 1953. Field check 1955  
Polyconic projection. 1927 North American datum  
10,000-foot grid based on Oregon coordinate system, north zone  
1000-meter Universal Transverse Mercator grid ticks,  
zone 10, shown in blue  
Revisions shown in purple compiled from aerial photographs  
taken 1970. This information not field checked

UTM GRID AND 1970 MAGNETIC NORTH  
DECLINATION AT CENTER OF SHEET

THIS MAP COMPLIES WITH NATIONAL MAP ACCURACY STANDARDS  
FOR SALE BY U.S. GEOLOGICAL SURVEY, DENVER, COLORADO 80225, OR WASHINGTON, D. C. 20242  
A FOLDER DESCRIBING TOPOGRAPHIC MAPS AND SYMBOLS IS AVAILABLE ON REQUEST

ROAD CLASSIFICATION  
Heavy-duty ——— Light-duty ———  
Medium-duty ——— Unimproved dirt ———  
U.S. Route ——— State Route ———

YODER, OREG.  
NW/4 MOLALLA 15' QUADRANGLE  
N4507.5—W12237.5/7.5  
1955  
PHOTOREVISED 1970  
AMS 1474 II NW—SERIES V892

2260  
MAR 1 1972

USGS  
HISTORICAL FILE  
TOPOGRAPHIC DIVISION