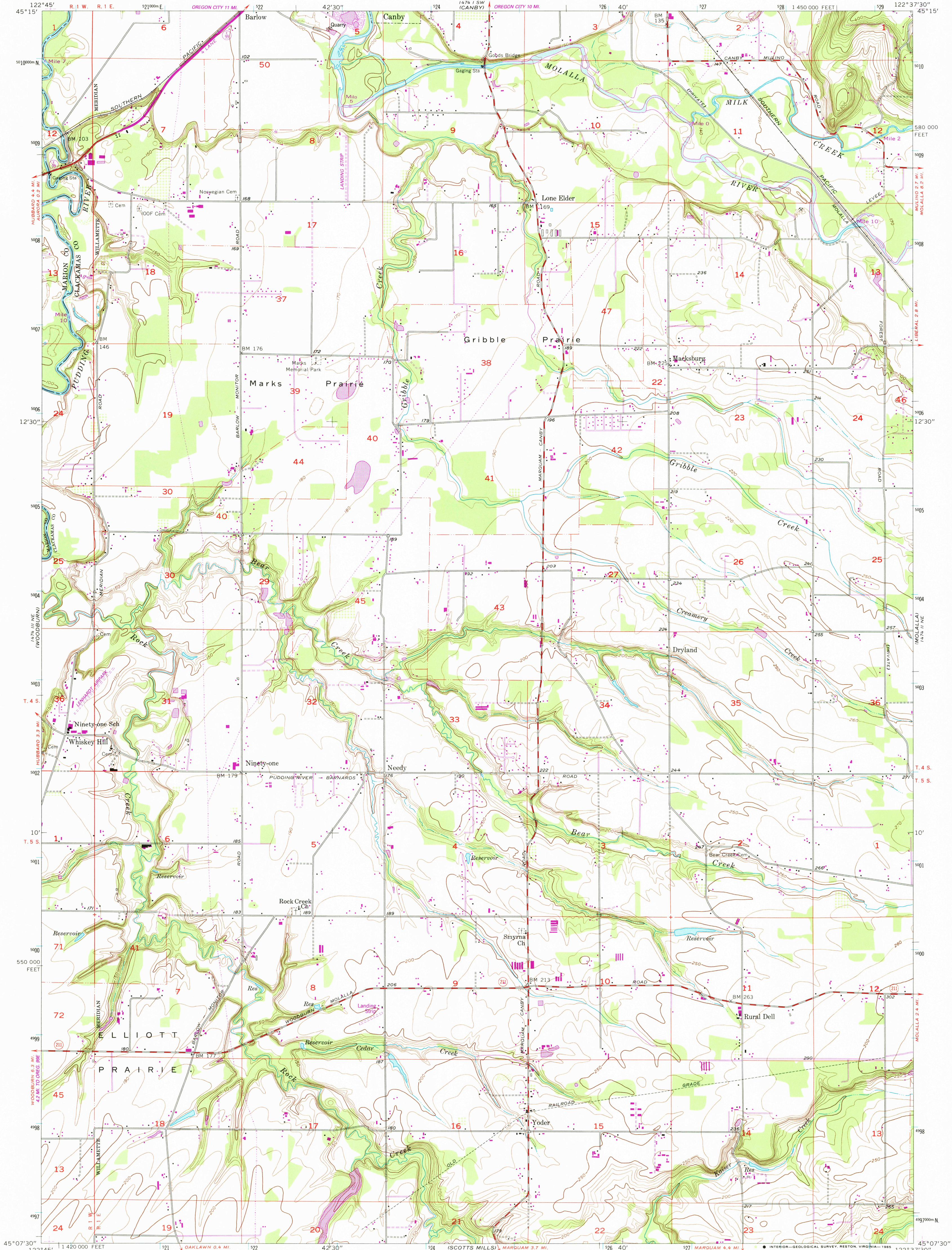


147°14' W  
(SHERWOOD)

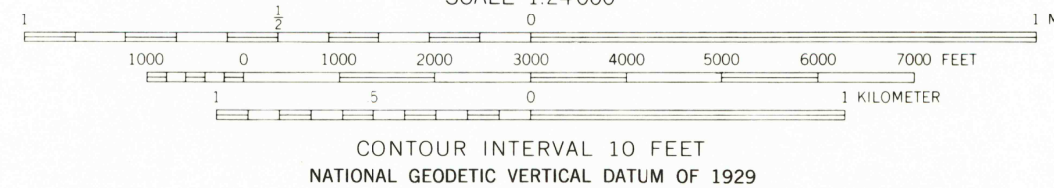
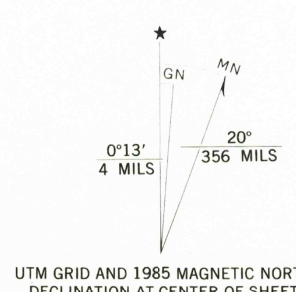
UNITED STATES  
DEPARTMENT OF THE INTERIOR  
GEOLOGICAL SURVEY

YODER QUADRANGLE  
OREGON  
7.5 MINUTE SERIES (TOPOGRAPHIC)

17°14' SE  
(OREGON CITY)



Mapped, edited, and published by the Geological Survey  
Control by USGS, USCGS, USCE, and State of Oregon  
Topography from aerial photographs by Kelsh plotter  
Aerial photographs taken 1953. Field check 1955  
Polyconic projection. 1927 North American datum  
10,000-foot grid based on Oregon coordinate system, north zone  
1000-meter Universal Transverse Mercator grid ticks,  
zone 10, shown in blue  
To place on the predicted North American Datum 1983,  
move the projection lines 22 meters north and  
94 meters east as shown by dashed corner ticks  
Revisions shown in purple compiled from aerial  
photographs taken 1981 and other sources  
This information not field checked. Map edited 1985



ROAD CLASSIFICATION	
Heavy-duty	Light-duty
Medium-duty	Unimproved dirt
U.S. Route	State Route

THIS MAP COMPLIES WITH NATIONAL MAP ACCURACY STANDARDS  
FOR SALE BY U.S. GEOLOGICAL SURVEY, DENVER, COLORADO 80225  
OR RESTON, VIRGINIA 22092  
A FOLDER DESCRIBING TOPOGRAPHIC MAPS AND SYMBOLS IS AVAILABLE ON REQUEST

YODER, OREG.  
45122-B6-TF-024

1955  
PHOTOREVISED 1985  
DMA 1474 II NW-SERIES V892

