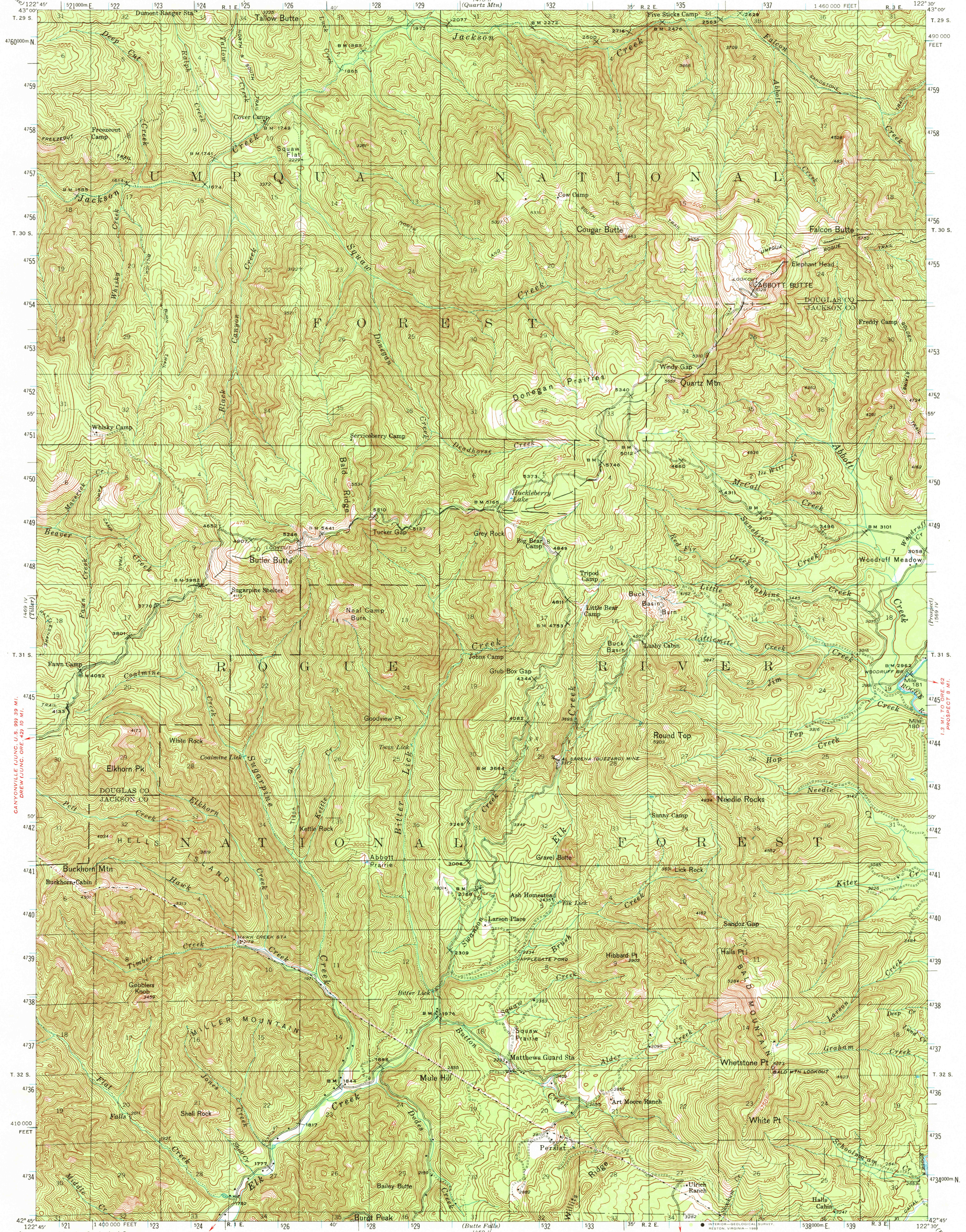


UNITED STATES
DEPARTMENT OF THE INTERIOR
GEOLOGICAL SURVEY

OREGON
ABBOTT BUTTE QUADRANGLE
15-MINUTE SERIES
1:460,000 FEET

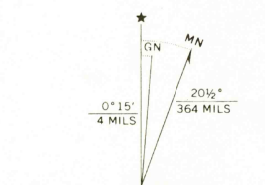


Map by the Geological Survey

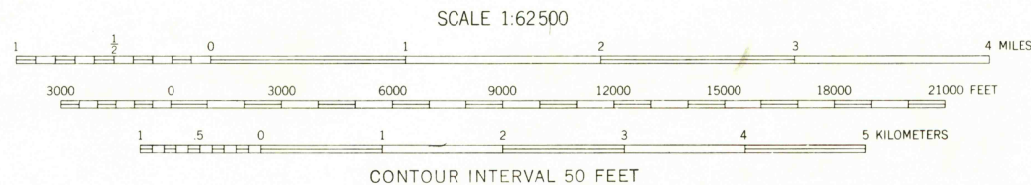
Polyconic projection. 1927 North American datum
10,000-foot grid based on Oregon (south)
rectangular coordinate system
1000-meter Universal Transverse Mercator grid ticks,
zone 10, shown in blue

To place on the predicted North American Datum 1983
move the projection lines 20 meters north and
94 meters east

There may be private inholdings within the boundaries of
the National or State reservations shown on this map



UTM GRID AND 1984 MAGNETIC NORTH
DECLINATION AT CENTER OF SHEET



CONTOUR INTERVAL 50 FEET

NATIONAL GEODETIC VERTICAL DATUM OF 1929

FOR SALE BY U. S. GEOLOGICAL SURVEY, DENVER, COLORADO 80225, OR RESTON, VIRGINIA 22092
A FOLDER DESCRIBING TOPOGRAPHIC MAPS AND SYMBOLS IS AVAILABLE ON REQUEST



ROAD CLASSIFICATION
Light-duty ————— Unimproved dirt —————

ABBOTT BUTTE, OREG.

N 4245—W 12230/15

1944

DMA 1469 I—SERIES V792

USGS
HISTORICAL FILE
NATIONAL MAPPING DIVISION

JUL 7 1981
1300