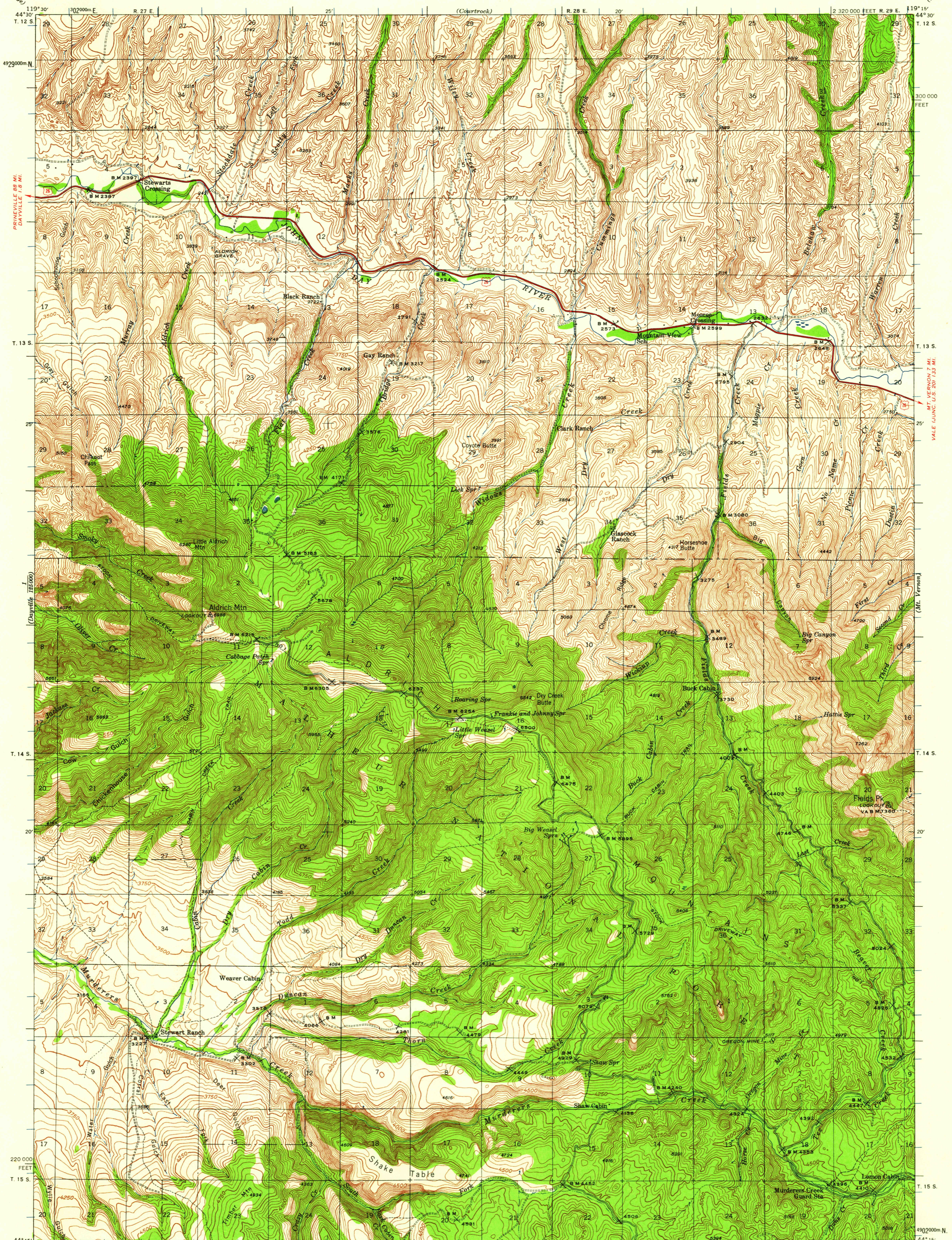


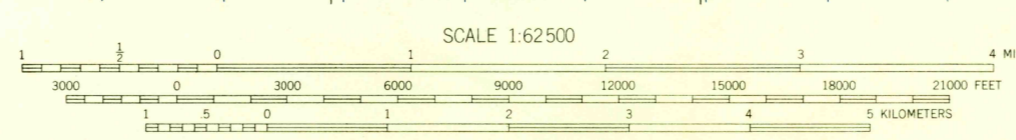
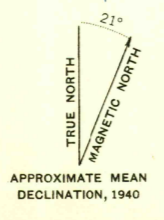
UNITED STATES  
DEPARTMENT OF THE INTERIOR  
GEOLOGICAL SURVEY

OREGON  
(GRANT COUNTY)  
ALDRICH MTN. QUADRANGLE  
15-MINUTE SERIES



Topography by R. R. Monbeck, E. S. Rickard,  
J. M. Holmes, C. W. Birdseye, B. F. Martin,  
and H. J. Wenderoth  
Surveyed in 1939-1940

**ROAD CLASSIFICATION**  
 Heavy-duty ——— Light-duty ———  
 Unimproved dirt - - - - -  
 U. S. Route



CONTOUR INTERVAL 50 FEET  
DATUM IS MEAN SEA LEVEL

FOR SALE BY U. S. GEOLOGICAL SURVEY, DENVER 25, COLORADO OR WASHINGTON 25, D. C.  
A FOLDER DESCRIBING TOPOGRAPHIC MAPS AND SYMBOLS IS AVAILABLE ON REQUEST

USGS  
Historical File  
Topographic Division

ALDRICH MTN., OREG.  
N 4415-W 11915/15

1940

U.S.G.S.  
FILE COPY  
TOPOGRAPHIC DIVISION

JUN 2 0 1960

1495