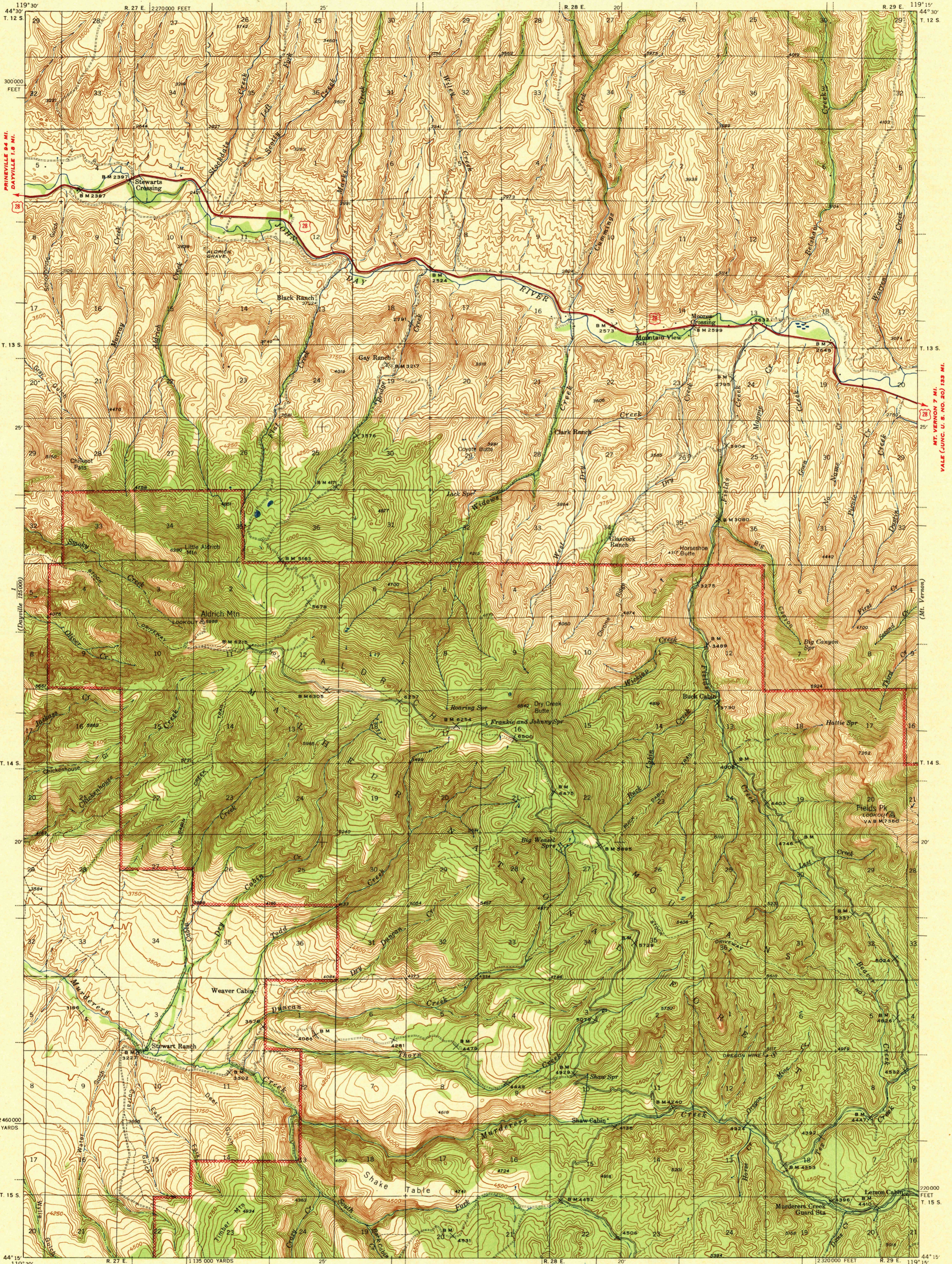


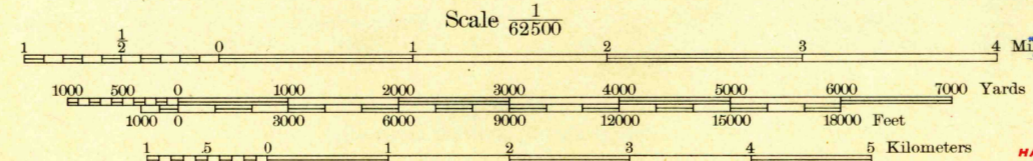
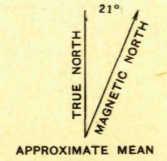
U. S. G. S.
FILE COPY
Inspection and Editing.

UNITED STATES
DEPARTMENT OF THE INTERIOR
GEOLOGICAL SURVEY

OREGON
(GRANT COUNTY)
ALDRICH MTN. QUADRANGLE
15-MINUTE SERIES



Topography by R. R. Monbeck, E. S. Rickard,
J. M. Holmes, C. W. Birdseye, B. F. Martin,
and H. J. Wenderoth
Surveyed in 1939-1940



Contour interval 50 feet
Datum is mean sea level

U. S. G. S.
FILE COPY
Inspection and Editing.

USGS
Historical File
Topographic Division

Polyconic projection. 1927 North American datum
5000 yard grid based on U. S. zone system, G
10000 foot grid based on Oregon (North)
rectangular coordinate system

ALDRICH MTN., OREG.
Edition of 1943

ROUTES USUALLY TRAVELED
HARD IMPROVED SURFACES
OTHER SURFACE IMPROVEMENTS
U. S. ROUTE 1943 STATE ROUTE

N4415-W11915/15

JUL 24 1943

3180