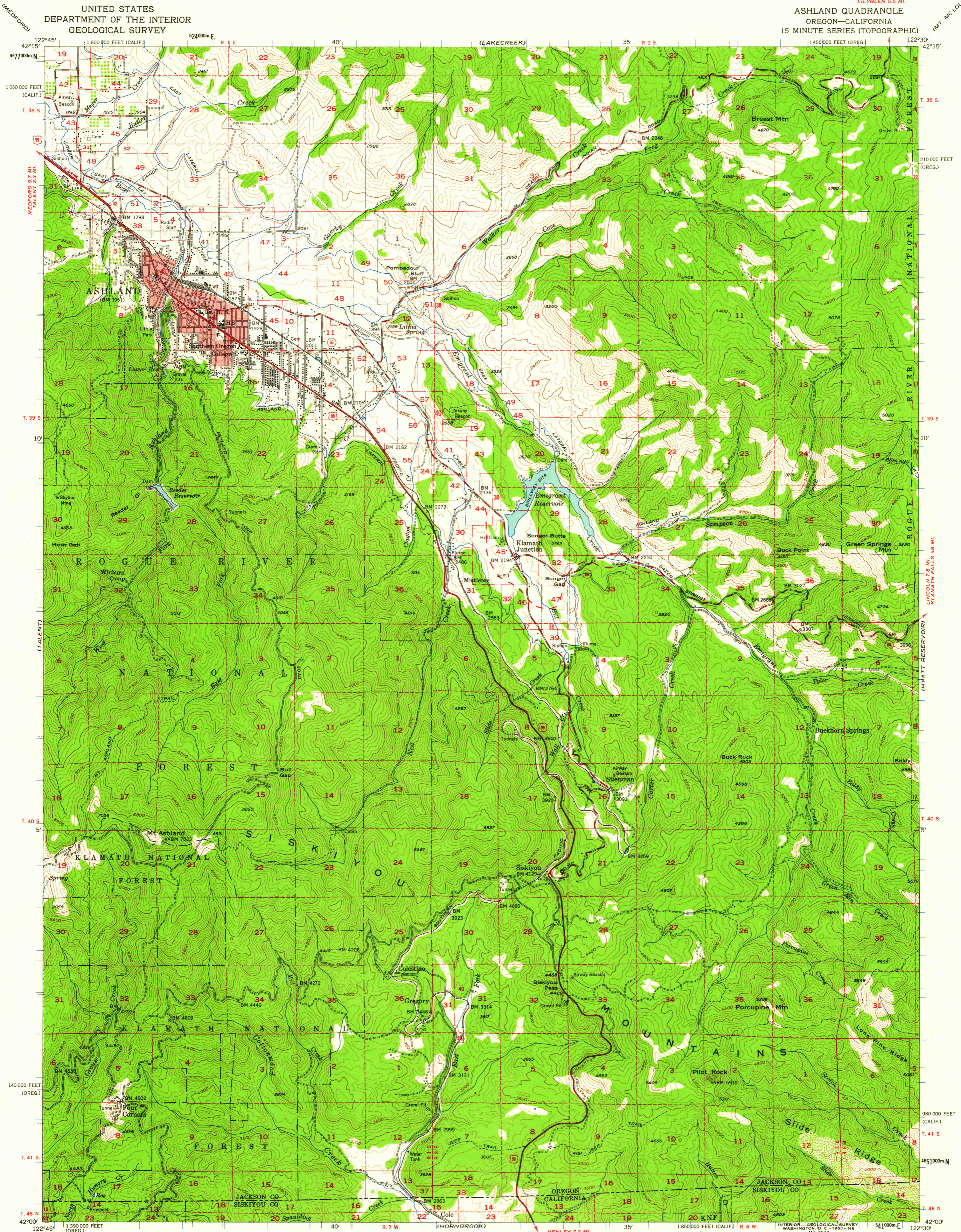
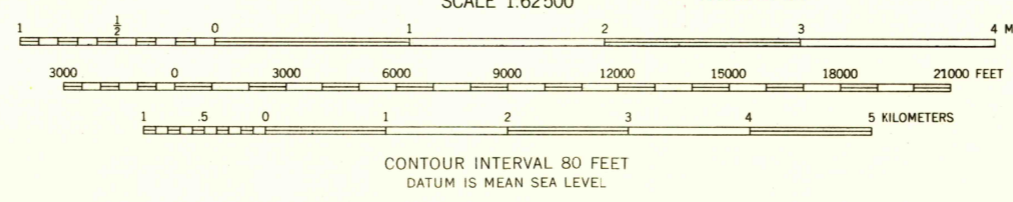
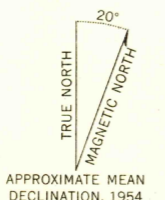


UNITED STATES  
DEPARTMENT OF THE INTERIOR  
GEOLOGICAL SURVEY

ASHLAND QUADRANGLE  
OREGON—CALIFORNIA  
15 MINUTE SERIES (TOPOGRAPHIC)



Mapped, edited, and published by the Geological Survey  
Control by USGS and USC&GS  
Topography from aerial photographs by multiplex methods  
Aerial photographs taken 1951. Field check 1954  
Polyconic projection, 1927 North American datum  
10,000-foot grid based on Oregon coordinate system, south zone  
and California coordinate system, zone 1  
1000-meter Universal Transverse Mercator grid ticks,  
zone 10, shown in blue  
Red tint indicates areas in which only landmark buildings are shown  
Dashed land lines indicate approximate locations



U.S.G.S. Historical File Topographic Division  
ROAD CLASSIFICATION  
Heavy-duty ——— Light-duty ———  
Medium-duty ——— Unimproved dirt ———  
U.S. Route State Route



U.S.G.S. ASHLAND, OREG.—CALIF.  
N4200—W12230/15  
1954  
FILE COP  
TOPOGRAPHIC DIVISION

THIS MAP COMPLIES WITH NATIONAL MAP ACCURACY STANDARDS  
FOR SALE BY U. S. GEOLOGICAL SURVEY, DENVER 25, COLORADO OR WASHINGTON 25, D. C.  
A FOLDER DESCRIBING TOPOGRAPHIC MAPS AND SYMBOLS IS AVAILABLE ON REQUEST

4555  
NOV - 7 1960