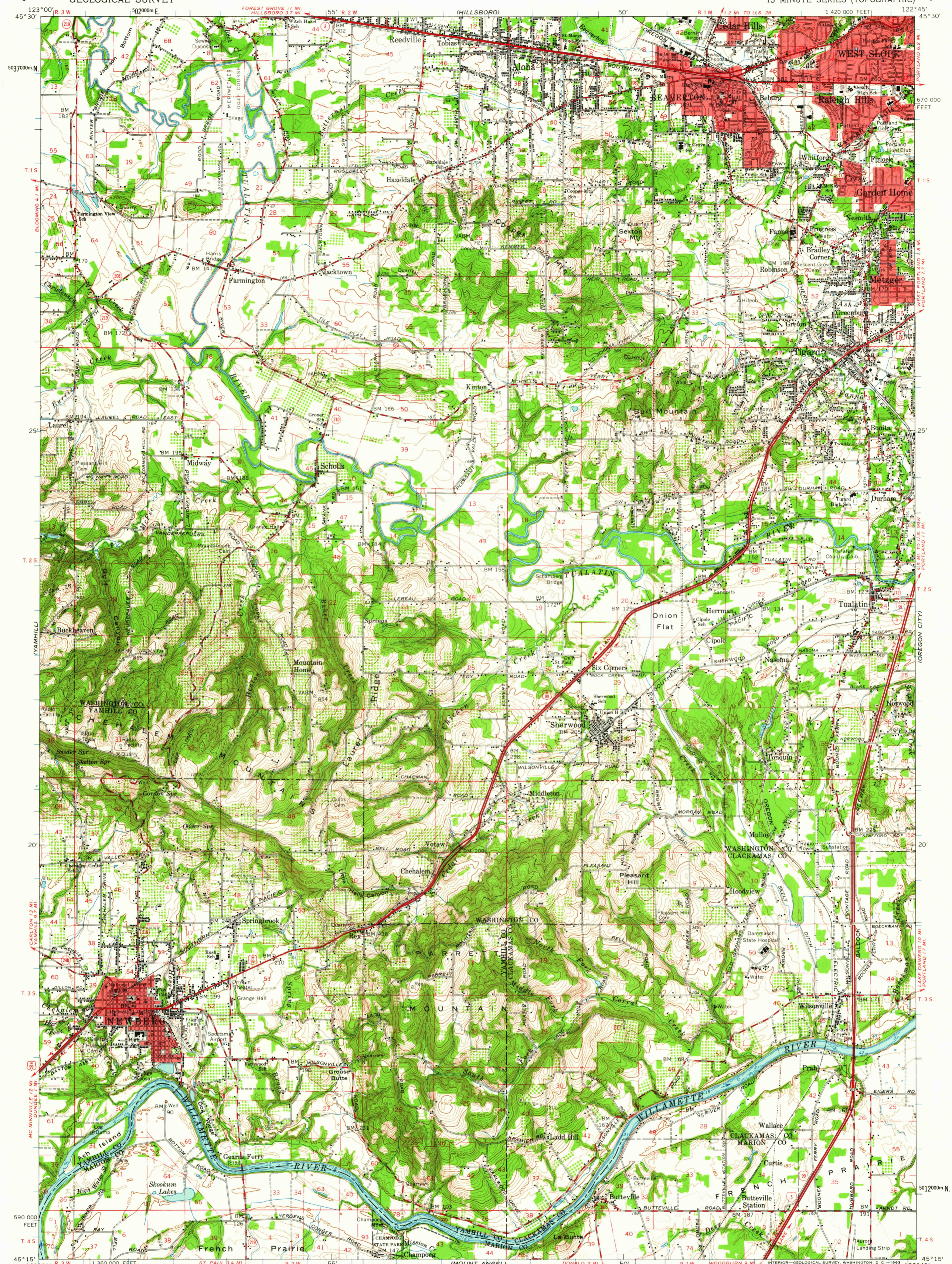
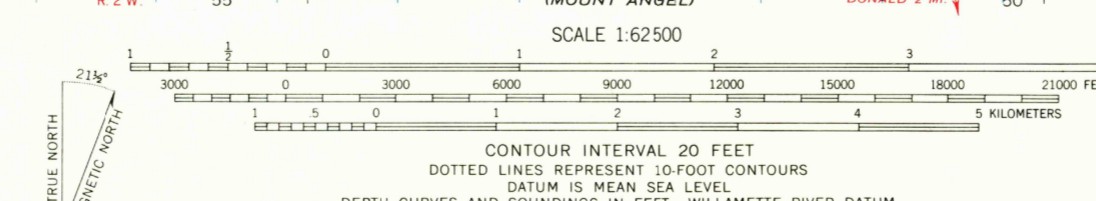


UNITED STATES
DEPARTMENT OF THE INTERIOR
GEOLOGICAL SURVEY

BEAVERTON QUADRANGLE
OREGON
15 MINUTE SERIES (TOPOGRAPHIC)



Mapped, edited, and published by the Geological Survey
Control by USGS, USC&GS, USCE, and State of Oregon
Compiled in 1961 from 1:24 000-scale maps dated 1961
Selected hydrographic data compiled from USC&GS Chart 6172 (1958)
This information is not intended for navigational purposes
Polyconic projection. 1927 North American datum
10,000-foot grid based on Oregon coordinate system, north zone
1000-meter Universal Transverse Mercator grid ticks,
zone 10, shown in blue
Red tint indicates areas in which only landmark buildings are shown



USGS
Historical File
Topographic Division

ROAD CLASSIFICATION

Light-duty	Unimproved dirt
Medium-duty	Interstate Route
Heavy-duty	U.S. Route
	State Route

QUADRANGLE LOCATION

OREGON

BEAVERTON, OREG.
N4515-W12245/15

1961

CONTOUR INTERVAL 20 FEET
DOTTED LINES REPRESENT 10-FOOT CONTOURS
DATUM IS MEAN SEA LEVEL
DEPTH CURVES AND SOUNDINGS IN FEET—WILLAMETTE RIVER DATUM

THIS MAP COMPLIES WITH NATIONAL MAP ACCURACY STANDARDS
FOR SALE BY U. S. GEOLOGICAL SURVEY, DENVER 25, COLORADO OR WASHINGTON 25, D. C.
A FOLDER DESCRIBING TOPOGRAPHIC MAPS AND SYMBOLS IS AVAILABLE ON REQUEST

MAR 19 1963

3/60

U.S.G.S.
TOPOGRAPHIC DIVISION