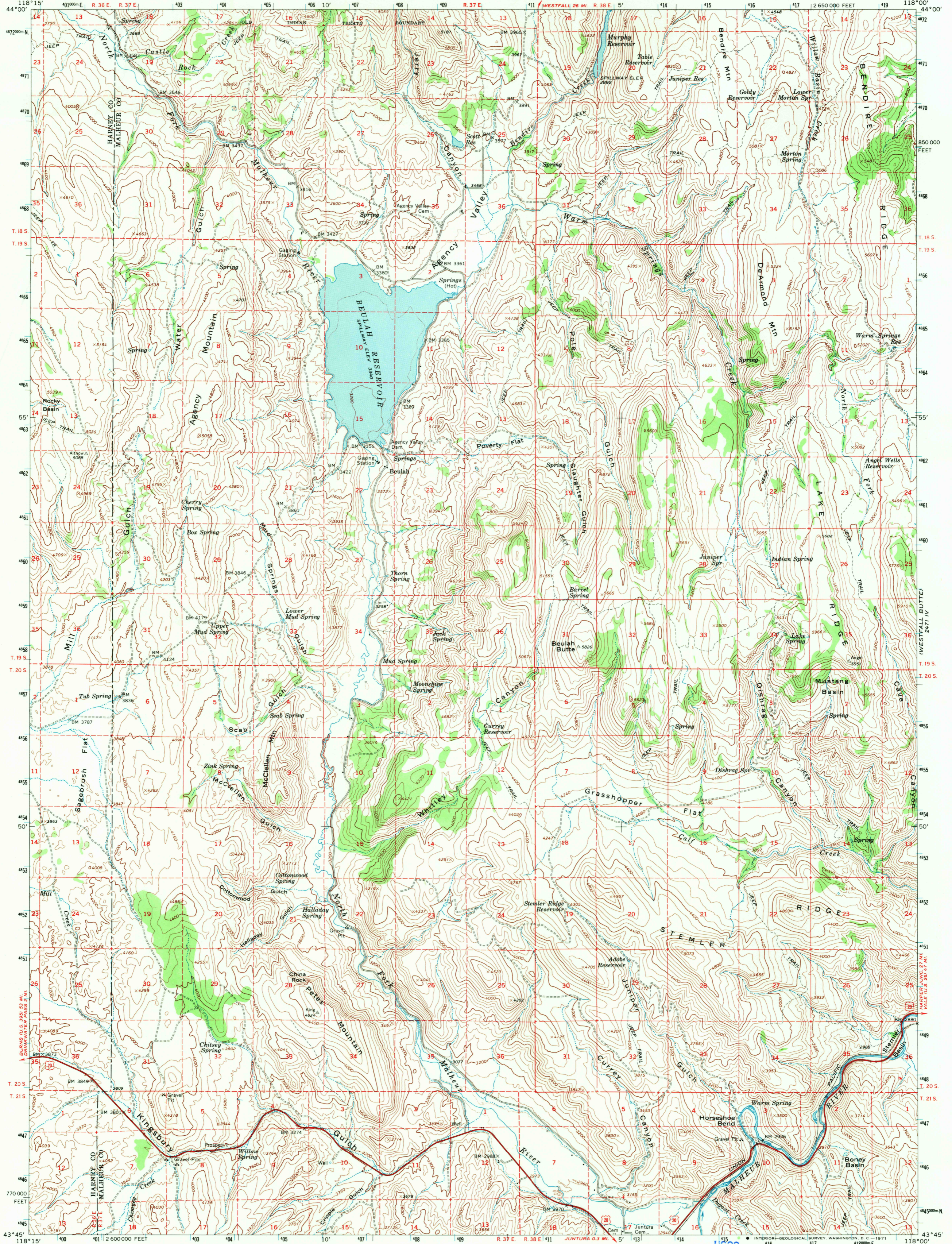
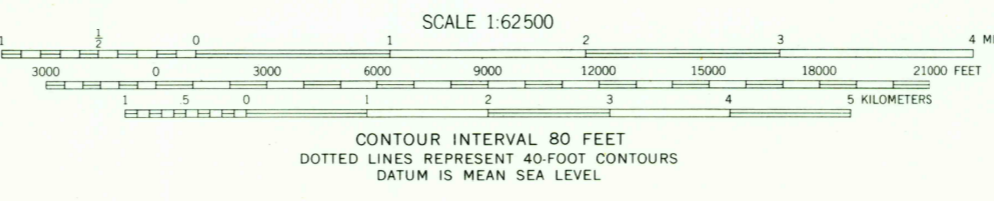
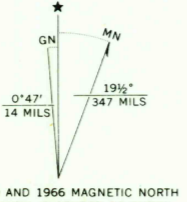


277 W
CLOVER CREEK RANCH



Mapped, edited, and published by the Geological Survey
Control by USGS and USC&GS
Topography by photogrammetric methods from aerial
photographs taken 1966. Field checked 1966
Underwater contours by U.S. Bureau of Reclamation
Polyconic projection. 1927 North American datum
10,000-foot grid based on Oregon coordinate system,
south zone
1000-meter Universal Transverse Mercator grid ticks,
zone 11, shown in blue



USGS
Historical File
Topographic Division
ROAD CLASSIFICATION
Unimproved dirt
Light-duty
U.S. Route

2845

THIS MAP COMPLIES WITH NATIONAL MAP ACCURACY STANDARDS
FOR SALE BY U.S. GEOLOGICAL SURVEY, DENVER, COLORADO 80225, OR WASHINGTON, D.C. 20242
A FOLDER DESCRIBING TOPOGRAPHIC MAPS AND SYMBOLS IS AVAILABLE ON REQUEST

USGS
FILE COPY
TOPOGRAPHIC DIVISION

BEULAH, OREG.
N4345-W11800/15
1966
AMS 2371 I-SERIES V792

FEB 22 1971