

OREGON  
LANE COUNTY  
BLACHLY QUADRANGLE  
GRID ZONE "G"

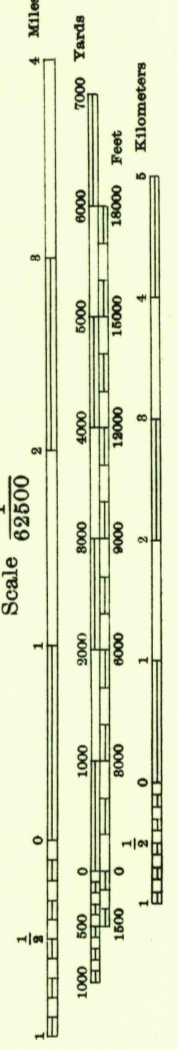
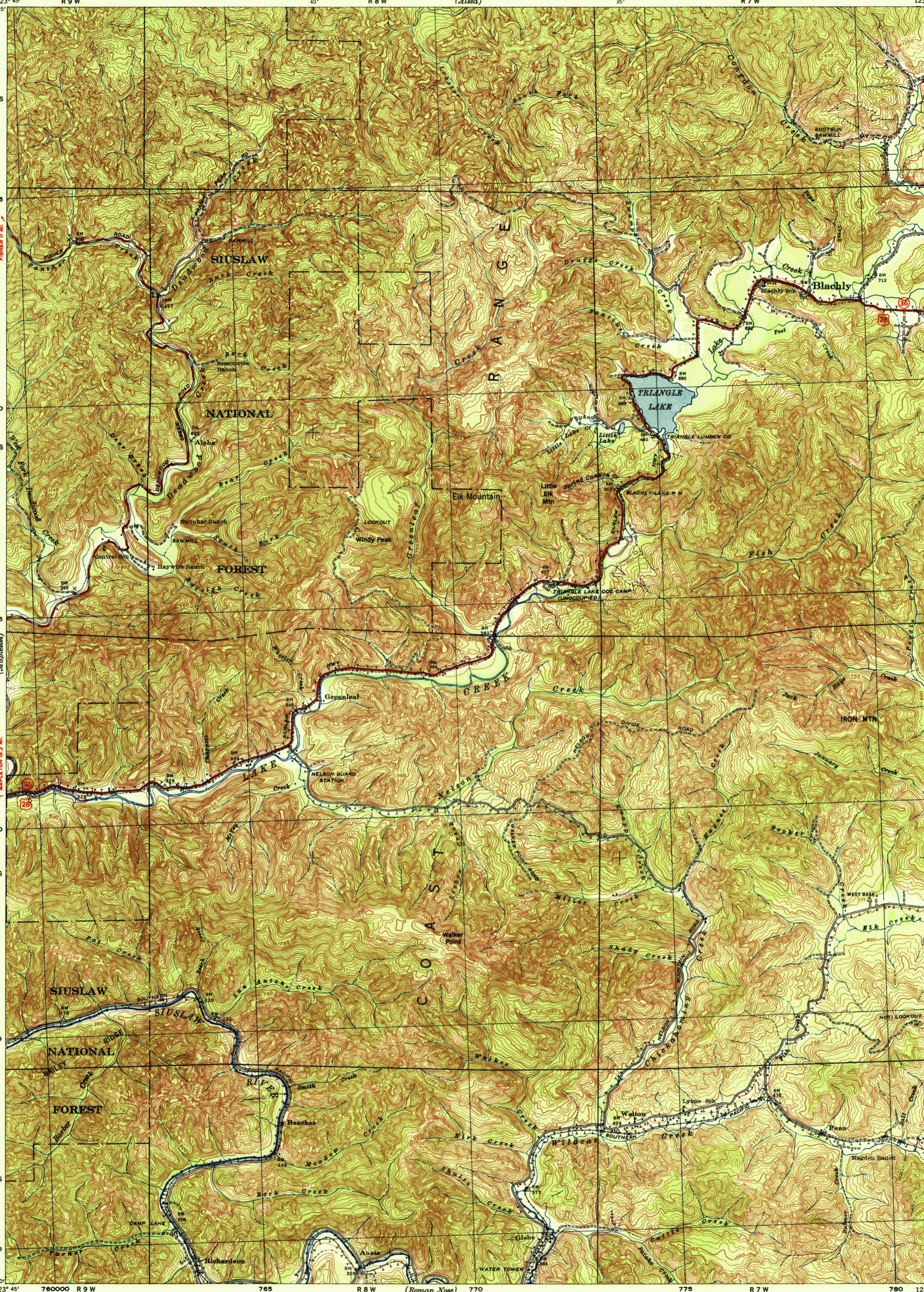
CORPS OF ENGINEERS, U. S. ARMY  
TACTICAL MAP

(Tidewater)

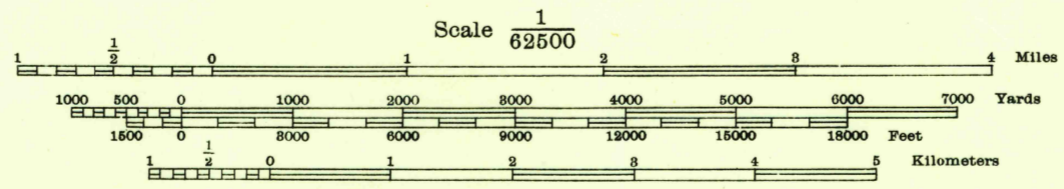
(Monroe)

123° 45' R 9 W 40' R 8 W (Alsea) 35' R 7 W 123° 30' 44° 15' T 15 S 2455 2450 T 16 S 10' 2445 (Mapleton) 2440 T 17 S 2435 SIUSLAW NATIONAL FOREST 2430 T 18 S 243000 44° 00' 123° 45' 76000 R 9 W 765 R 8 W (Roman Nose) 770 775 R 7 W 780 123° 30' 44° 00'

T 15 S  
T 16 S  
T 17 S  
T 18 S

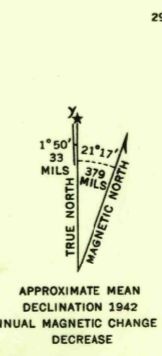


Prepared under the direction of the Chief of Engineers, U. S. Army, 1941.  
Horizontal control by 29th Engineers, U. S. Army, 1939.  
Vertical control by 29th Engineers, U. S. Army, 1939, and U. S. Coast and Geodetic Survey, 1934.  
Topography by 29th Engineers, U. S. Army, 1941, utilizing multiplex aerophotographs, from Tandom T-3A (five lens) aerial photographs.  
Photography by 91st Observation Squadron, Air Corps, U. S. Army, 1939.  
Polyconic Projection, North American 1927 Datum.



Contour interval 50 feet

Datum is mean sea level (1929 Adj.)  
FIVE THOUSAND YARD GRID COMPUTED FROM "GRID SYSTEM FOR PROGRESSIVE MAPS IN THE U. S.," ZONE G, U. S. C. & G. S. SPECIAL PUBLICATION NO. 59 (THE LAST THREE DIGITS OF THE GRID NUMBERS ARE OMITTED)  
NOTE: OFFICERS USING THIS MAP WILL MARK HEREON CORRECTIONS AND ADDITIONS WHICH COME TO THEIR ATTENTION AND MAIL DIRECT TO "THE CHIEF OF ENGINEERS, WASHINGTON, D. C."



RCUTES USUALLY TRAVELED  
HARD IMPERVIOUS SURFACES  
OTHER SURFACE IMPROVEMENTS  
28 U. S. ROUTE 1941 36 STATE ROUTE

BLACHLY, OREG.  
N4400 - W12330/15

FILE COPY  
Historical File  
Topographic Division

LOGGED OFF