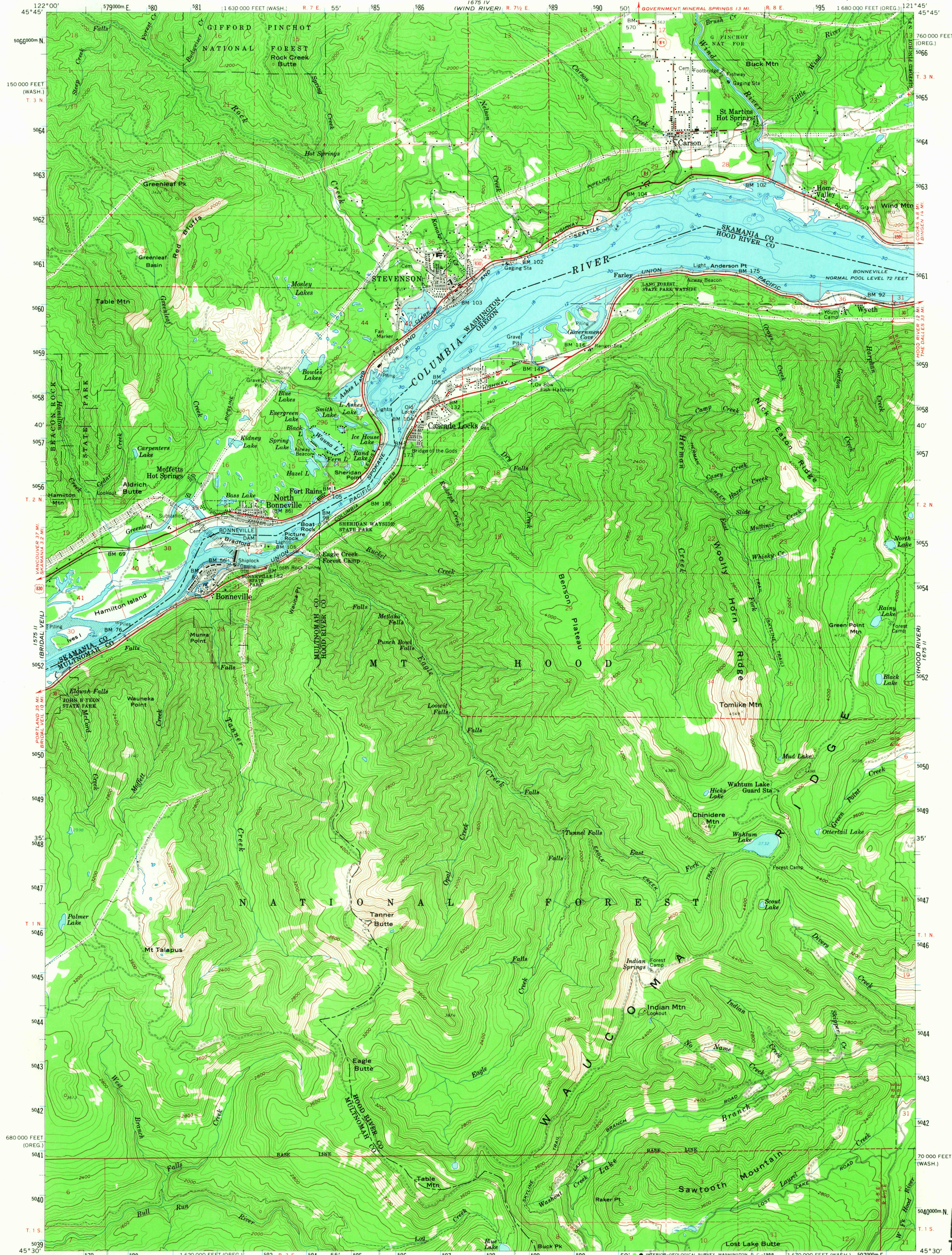


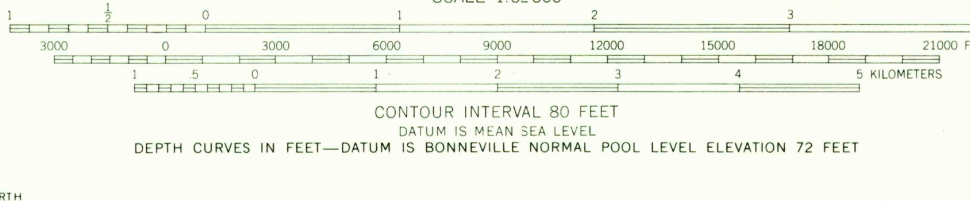
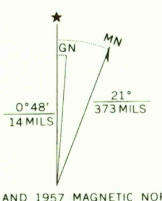
UNITED STATES
DEPARTMENT OF THE INTERIOR
GEOLOGICAL SURVEY

BONNEVILLE DAM QUADRANGLE
OREGON-WASHINGTON
15 MINUTE SERIES (TOPOGRAPHIC)



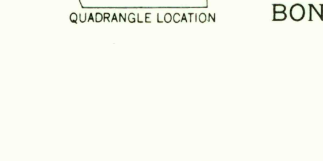
Mapped, edited, and published by the Geological Survey

Control by USGS and USC&GS
Topography from aerial photographs by ER-55 plotter
Aerial photographs taken 1955. Field check 1957
Hydrography compiled from USC&GS chart 6157 (1953)
Polyconic projection. 1927 North American datum
10,000-foot grids based on Oregon coordinate system,
north zone, and Washington coordinate system, south zone
1000-meter Universal Transverse Mercator grid ticks,
zone 10, shown in blue
Oregon-Washington boundary by interstate agreement
December 1956. Subject to ratification
Dashed land lines indicate approximate locations
Land lines unsurveyed in T. 1 N.-R. 7 E., and in parts of
T. 2 N.-R. 7 E., T. 1 N.-R. 8 E., and T. 1 S.-R. 7 and 8 E.
Unchecked elevations are shown in brown



USGS
Historical File
Topographic Division

ROAD CLASSIFICATION
Heavy-duty ——— Light-duty ———
Medium-duty ——— Unimproved dirt ———
U. S. Route ——— State Route ———



BONNEVILLE DAM, OREG.-WASH.
N4530-W12145/15
1957
AMS 1675 III-SERIES V792

U.S.G.S.
FILE COPY
TOPOGRAPHIC DIVISION

5750
JUL 29 1968