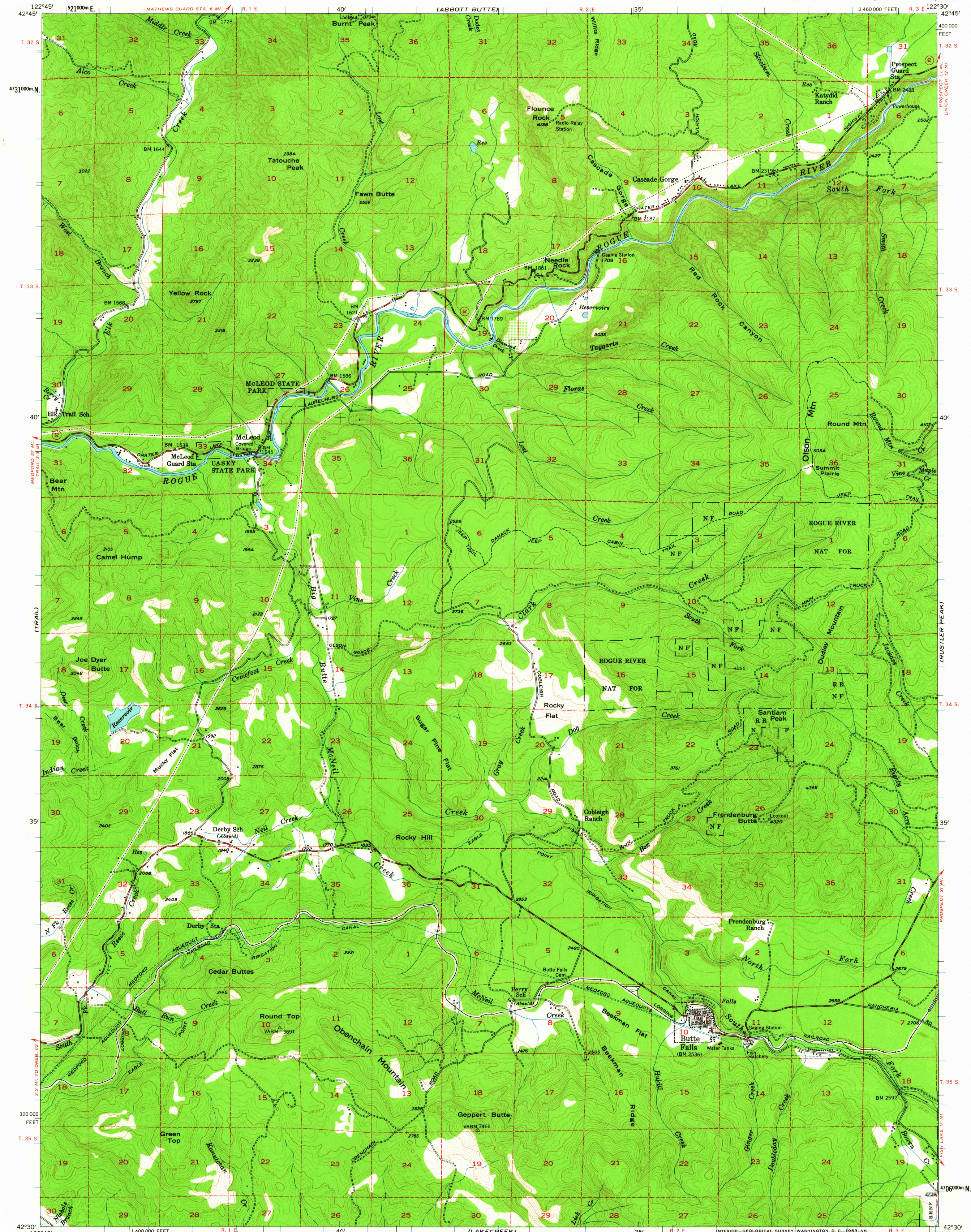


UNITED STATES
DEPARTMENT OF THE INTERIOR
GEOLOGICAL SURVEY

BUTTE FALLS QUADRANGLE
OREGON—JACKSON CO.
15 MINUTE SERIES (TOPOGRAPHIC)



Mapped, edited, and published by the Geological Survey

Control by USGS, USC&GS, and Medford Water Commission

Topography from aerial photographs by multiplex methods

Aerial photographs taken 1951. Field check 1954

Polyconic projection. 1927 North American datum

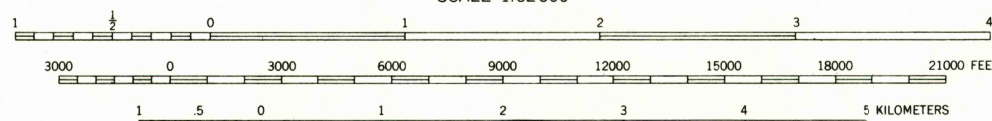
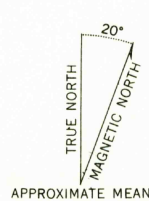
10,000-foot grid based on Oregon coordinate system, south zone

Dashed land lines indicate approximate locations

Unchecked elevations are shown in brown

1000-meter Universal Transverse Mercator grid ticks,

zone 10, shown in blue



CONTOUR INTERVAL 40 FEET

DATUM IS MEAN SEA LEVEL

FOR SALE BY U. S. GEOLOGICAL SURVEY, DENVER 25, COLORADO OR WASHINGTON 25, D. C.
A FOLDER DESCRIBING TOPOGRAPHIC MAPS AND SYMBOLS IS AVAILABLE ON REQUEST

USGS
Historical File
Topographic Division



U.S.G.S.
FILE COPY
TOPOGRAPHIC DIVISION

ROAD CLASSIFICATION
1963
Medium-duty ——— Light-duty ———
Unimproved dirt ———
State Route —○—

BUTTE FALLS, OREG.
N4230—W12230/15

1954

JUL 16 1963

2910