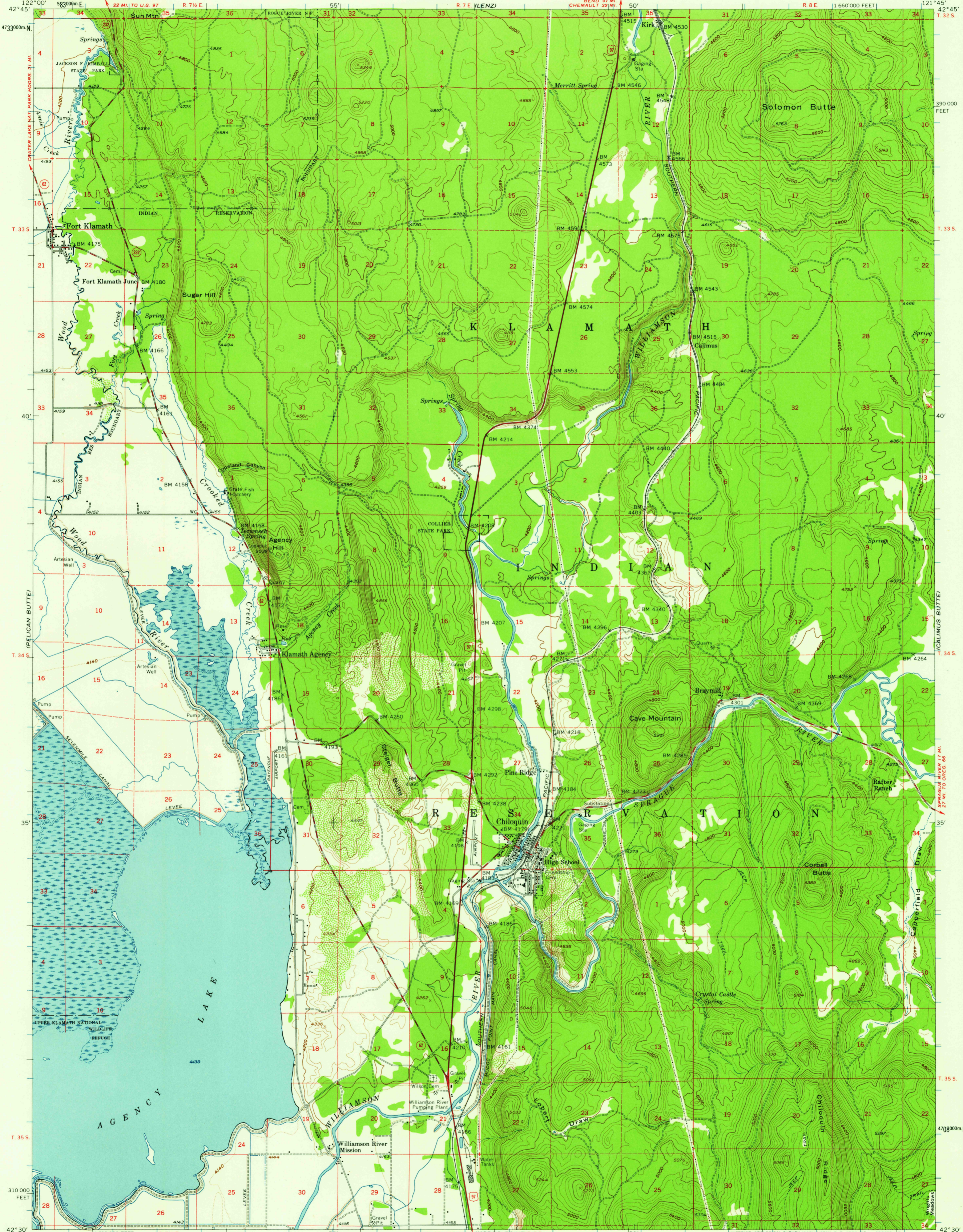


UNITED STATES  
DEPARTMENT OF THE INTERIOR  
GEOLOGICAL SURVEY

CHILOQUIN QUADRANGLE  
OREGON—KLAMATH CO.  
15 MINUTE SERIES (TOPOGRAPHIC)



Mapped, edited, and published by the Geological Survey  
Control by USGS, USC&GS, and State of Oregon  
Topography from aerial photographs by ER-55 plotter  
and by planetable surveys 1957. Aerial photographs taken 1955  
Polyconic projection. 1927 North American datum  
10,000-foot grid based on Oregon coordinate system, south zone  
1000-meter Universal Transverse Mercator grid ticks,  
zone 10, shown in blue  
Dashed land lines indicate approximate locations  
Unchecked elevations are shown in brown



U.S.G.S.  
FILE COPY  
TOPOGRAPHIC DIVISION

APR 14 1959

2360