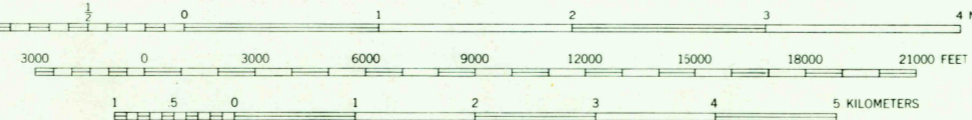
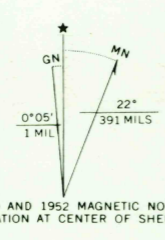
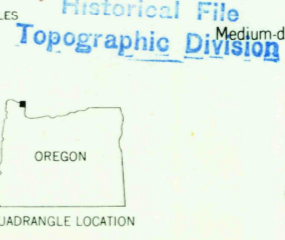




Mapped by the Army Map Service  
Edited and published by the Geological Survey  
Control by USC&GS, USCE, and OSHD  
Topography from aerial photographs by multiple methods 1940  
Aerial photographs taken 1937. Culture revision by USGS 1952  
Hydrography compiled from USC&GS Charts 6152 and 6153  
Polyconic projection. 1927 North American datum  
10,000-foot grids based on Oregon coordinate system, north zone,  
and Washington coordinate system, south zone  
Dashed land lines indicate approximate locations  
1000-meter Universal Transverse Mercator grid ticks,  
zone 10, shown in blue



SCALE 1:62500  
CONTOUR INTERVAL 50 FEET  
DATUM IS MEAN SEA LEVEL  
DEPTH CURVES IN FEET—DATUM IS MEAN LOWER LOW WATER  
SHORELINE SHOWN REPRESENTS THE APPROXIMATE LINE OF MEAN HIGH WATER  
THE AVERAGE RANGE OF TIDE IS APPROXIMATELY 5 FEET



ROAD CLASSIFICATION  
1963  
Medium-duty  
Light-duty  
Unimproved dirt  
U.S. Route  
State Route

CLATSKANIE, OREG.-WASH.  
N 4600—W 12300/15  
1952  
AMS 1376 II—SERIES V792

U.S.G.S.  
FILE COPY  
TOPOGRAPHIC DIVISION

4295  
JAN 26 1971