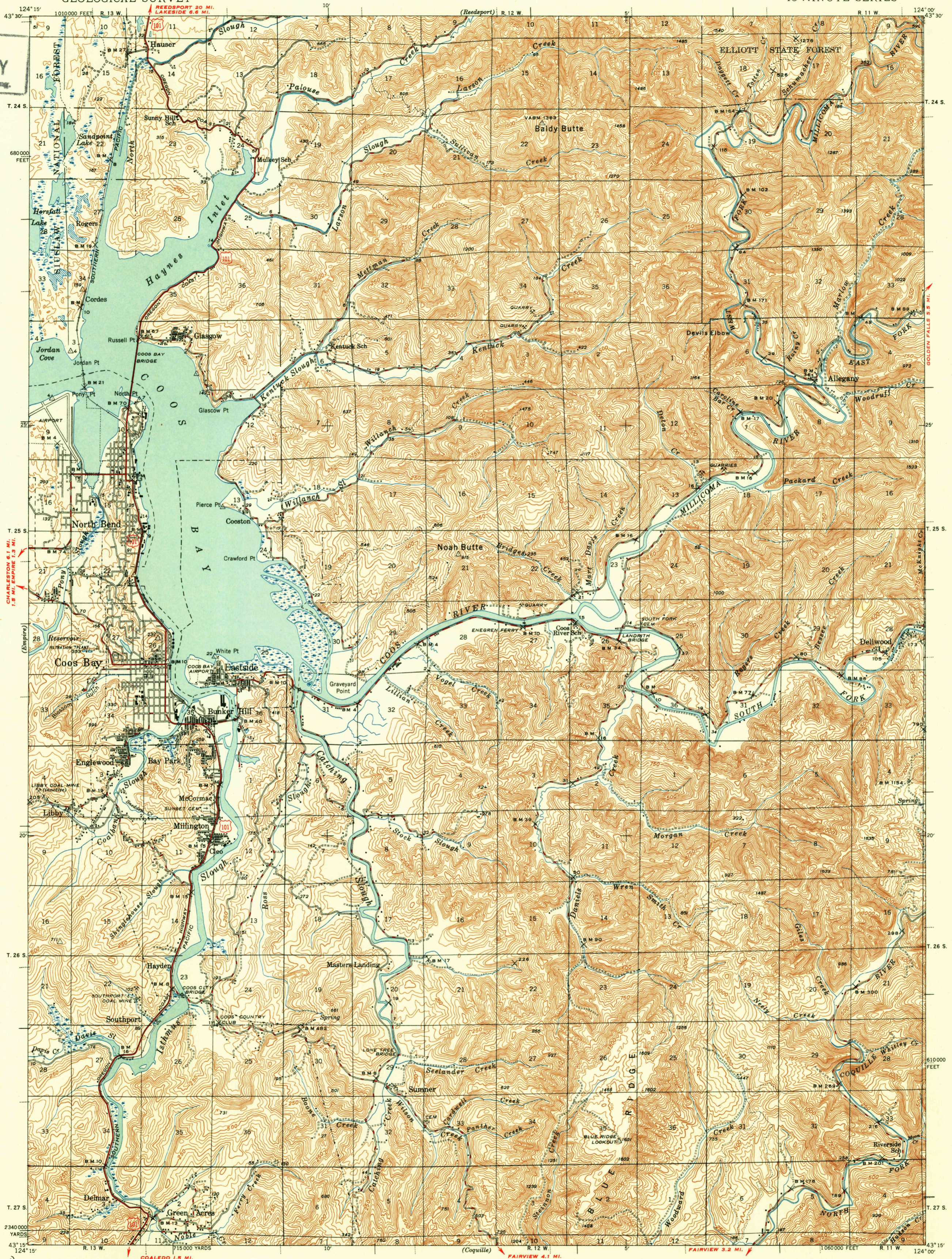


U.S.G.S.
FILE COPY
Inspection and Editing.

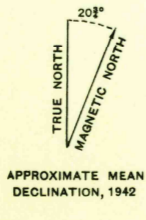


Mapped by the Geological Survey
1942

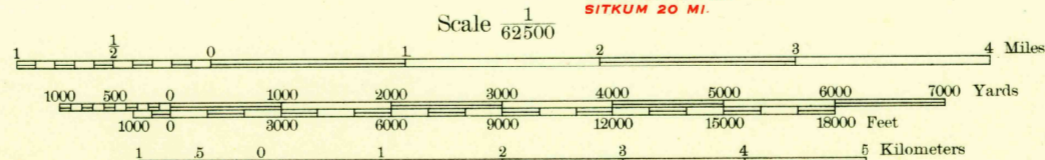
Only landmark buildings are shown
within the City Limits of Coos Bay
and North Bend

ROAD CLASSIFICATION

- Hard-surface all-weather roads
- Dry-weather roads
- Heavy-duty
- Improved dirt
- Medium-duty
- Unimproved dirt
- Loose-surface, graded, or narrow hard-surface
- U.S. Route
- State Route



APPROXIMATE MEAN
DECLINATION, 1942



Scale 62500
Contour interval 50 feet
Datum is mean sea level

Polyconic projection, 1927 North American datum
5000 yard grid based on U.S. zone system, G
10000 foot grid based on Oregon (South)
rectangular coordinate system

To join Reedsport map use dotted projection corners

COOS BAY, OREG.

Edition of 1945
reprinted 1950
N4315-W12400/15

USGS
Historical File
Topographic Division
FILE COPY
Inspection and Editing.

FOR SALE BY U.S. GEOLOGICAL SURVEY, FEDERAL CENTER, DENVER, COLORADO OR WASHINGTON 25, D. C.
A FOLDER DESCRIBING TOPOGRAPHIC MAPS AND SYMBOLS IS AVAILABLE ON REQUEST