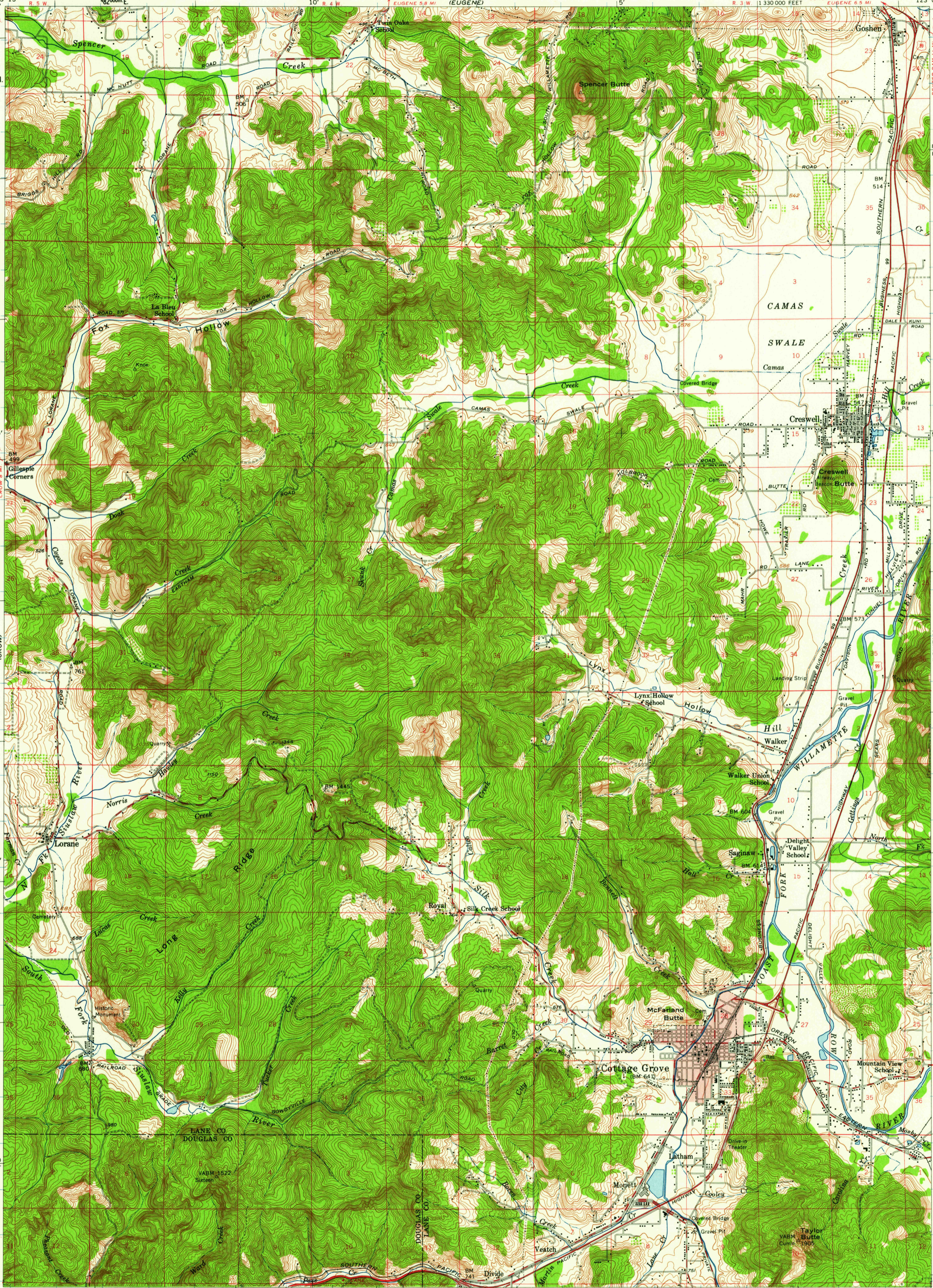
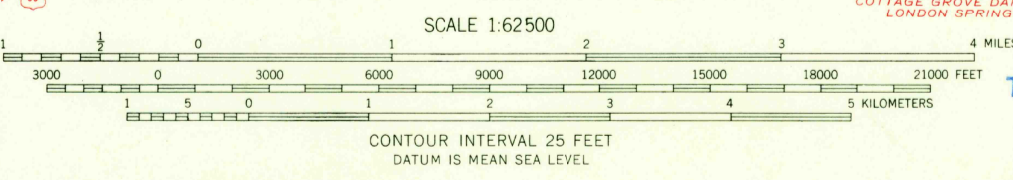
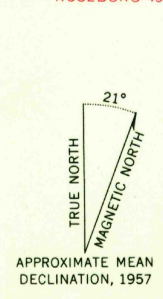


123°15' 44"00" W
T. 18 S
4870000m N
55'
T. 19 S
50'
T. 20 S
780 000 FEET
T. 21 S
43°45'

123°00' 44"00" W
T. 18 S
850 000 FEET
T. 19 S
T. 20 S
T. 21 S
43°45'



Mapped, edited, and published by the Geological Survey
Control by USGS and USACE
Topography by planetable surveys 1918-1919
Culture and drainage revised 1957
Polyconic projection. 1927 North American datum
10,000-foot grid based on Oregon coordinate system, south zone
1000-meter Universal Transverse Mercator grid ticks,
zone 10, shown in blue
Red tint indicates area in which only
landmark buildings are shown



USGS
Historical File
Topographic Division

| ROAD CLASSIFICATION | |
|---------------------|-----------------|
| Heavy duty | Light duty |
| Medium-duty | Unimproved dirt |
| U. S. Route | State Route |



COTTAGE GROVE, OREG.
N4345-W12300/15
1957

FOR SALE BY U. S. GEOLOGICAL SURVEY, DENVER 25, COLORADO OR WASHINGTON 25, D. C.
A FOLDER DESCRIBING TOPOGRAPHIC MAPS AND SYMBOLS IS AVAILABLE ON REQUEST

U.S.G.S.
FILE COPY
TOPOGRAPHIC DIVISION

MAR 10 1960

1360