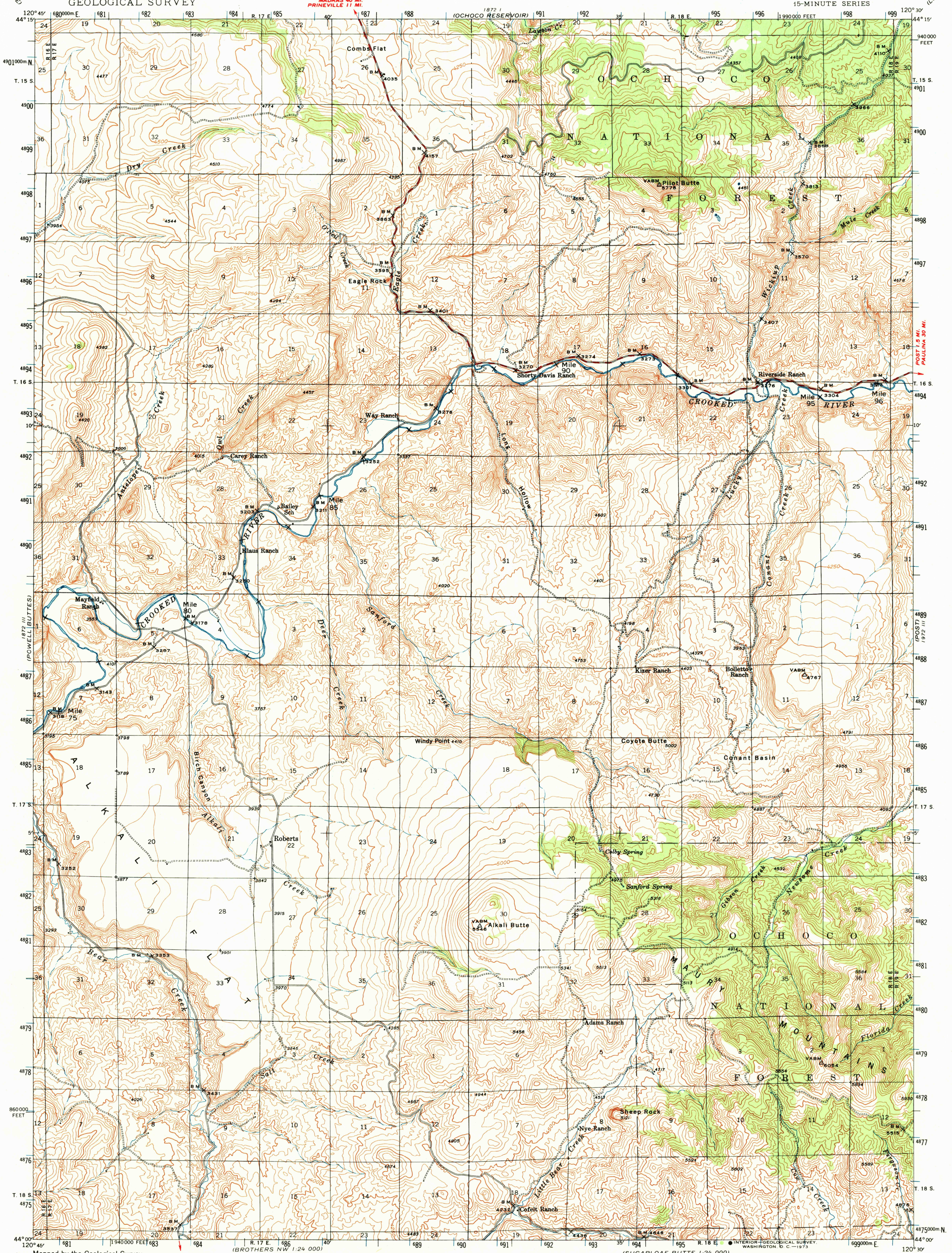


UNITED STATES
DEPARTMENT OF THE INTERIOR
GEOLOGICAL SURVEY

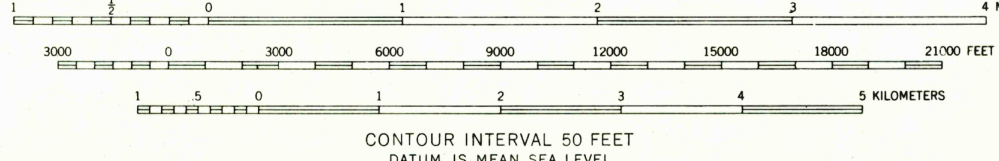
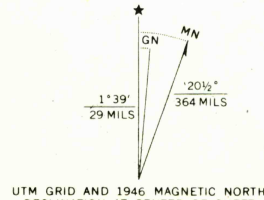
OREGON
(CROOK COUNTY)
EAGLE ROCK QUADRANGLE
15-MINUTE SERIES



Mapped by the Geological Survey
1946

SCALE 1:62500

ROAD CLASSIFICATION
1963
Medium-duty ——— Light-duty ———
Unimproved dirt ———



Polyconic projection, 1927 North American datum
10000 foot grid based on Oregon (South)
rectangular coordinate system
1000-meter Universal Transverse Mercator
grid ticks, zone 10, shown in blue

EAGLE ROCK, OREG.
N4400—W12030/15

1946

AMS 1872 II—SERIES V792

FOR SALE BY U. S. GEOLOGICAL SURVEY, DENVER, COLORADO 80225 OR WASHINGTON, D. C. 20242
A FOLDER DESCRIBING TOPOGRAPHIC MAPS AND SYMBOLS IS AVAILABLE ON REQUEST

USGS
HISTORICAL FILE
TOPOGRAPHIC DIVISION

JAN 2 1973

2585