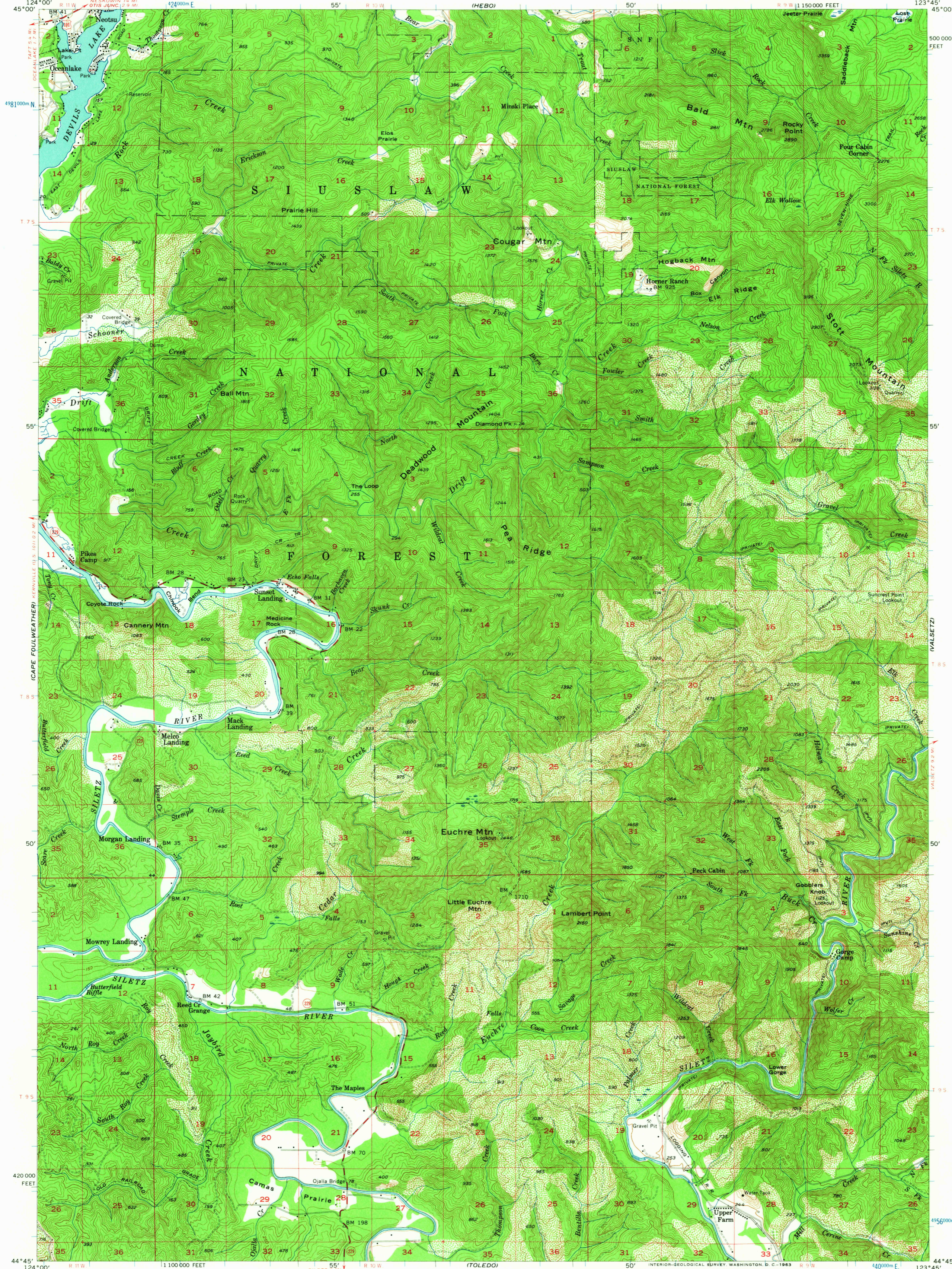
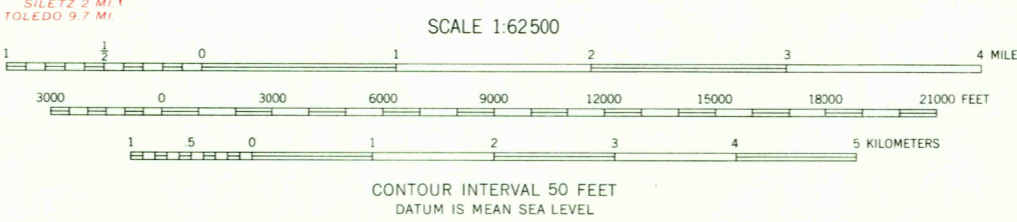


GRAND RONDE



Mapped, edited, and published by the Geological Survey  
Control by USGS and USC&GS  
Topography by planetable surveys 1941-42  
Culture and drainage revised from aerial photographs  
taken 1952. Field check 1957  
Polyconic projection. 1927 North American datum  
10,000-foot grid based on Oregon coordinate system,  
north zone  
1000-meter Universal Transverse Mercator grid ticks,  
zone 10, shown in blue



ROAD CLASSIFICATION  
Medium-duty ——— Light-duty ———  
Unimproved dirt - - - - -  
U.S. Route ——— State Route ———



EUCHRE MTN., OREG.  
N4445-W12345/15  
1957

FOR SALE BY U. S. GEOLOGICAL SURVEY, DENVER 25, COLORADO OR WASHINGTON 25, D. C.  
A FOLDER DESCRIBING TOPOGRAPHIC MAPS AND SYMBOLS IS AVAILABLE ON REQUEST

USGS  
Historical File  
Topographic Division

HISTORICAL

3710

AUG 20 1963