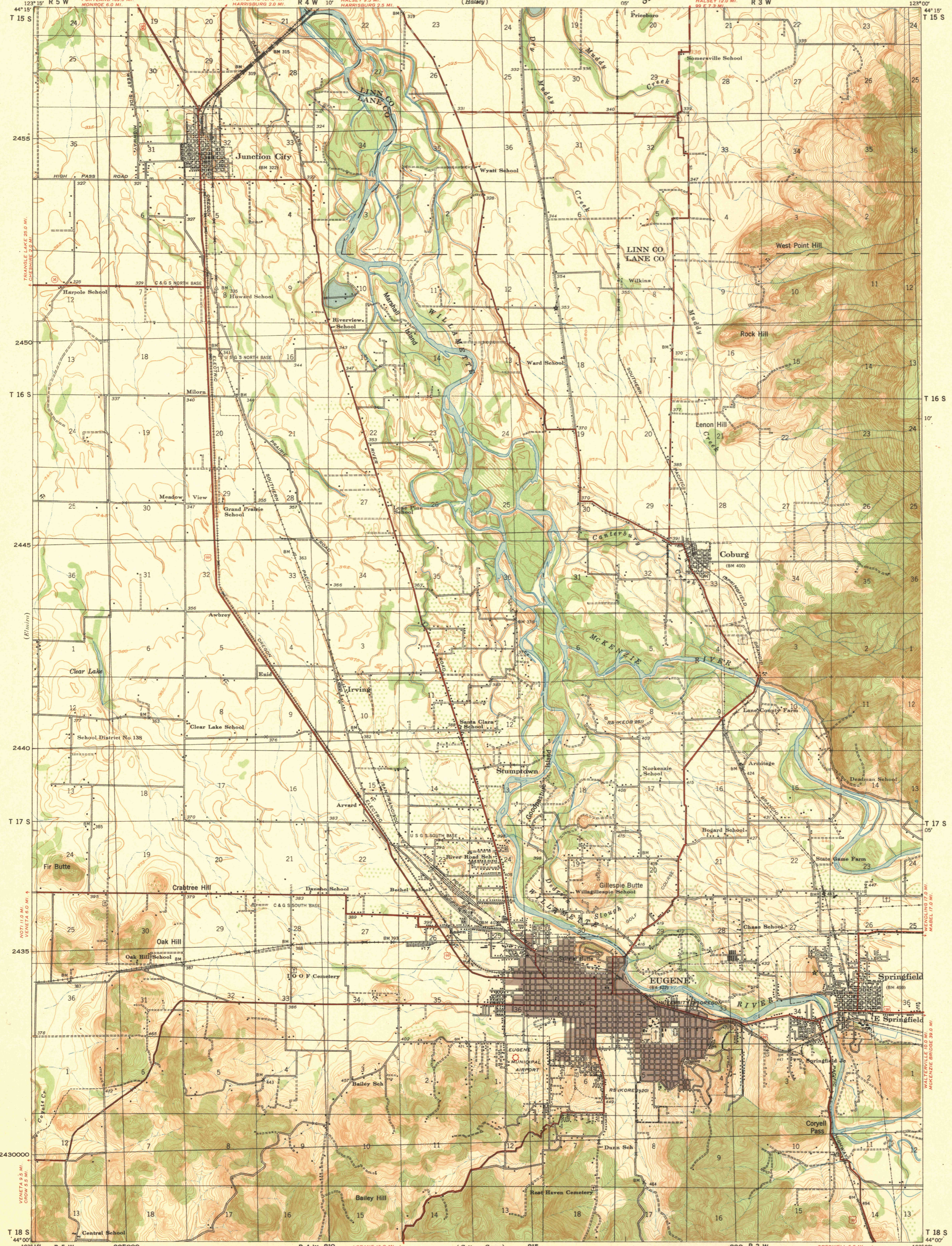


DEPARTMENT OF THE INTERIOR
U. S. GEOLOGICAL SURVEY

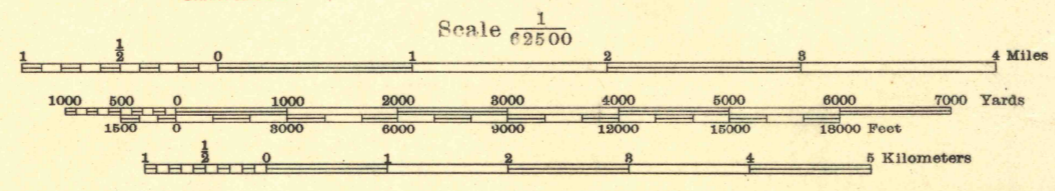
CORPS OF ENGINEERS, U. S. ARMY
TACTICAL MAP
(Halsey)

OREGON
EUGENE QUADRANGLE
GRID ZONE "G"

Advance edition
Subject to correction



Prepared under the direction of the Chief of Engineers, U. S. Army.
Control by U. S. Geological Survey.
Topography by U. S. Geological Survey, 1908.
Surveyed in Cooperation with State of Oregon.
Planimetric detail revised by a Federal W. P. A. Project, 1939 and 1940, under supervision of the 29th Engineers, U. S. Army.
Polyconic Projection, North American Datum 1927.



Contour interval 5 feet and 10 feet
changing on the 450 foot contour
Datum is mean sea level

FIVE THOUSAND YARD GRID COMPUTED FROM "GRID SYSTEM FOR PROGRESSIVE MAPS
IN THE U. S. ZONE G. U. S. C. & G. S. SPECIAL PUBLICATION NO. 59.
(THE LAST THREE DIGITS OF THE GRID NUMBERS ARE OMITTED)

NOTE: OFFICERS USING THIS MAP WILL MARK HEREON CORRECTIONS AND ADDITIONS WHICH COME
TO THEIR ATTENTION AND MAIL DIRECT TO "THE CHIEF OF ENGINEERS WASHINGTON, D. C."

ROUTES USUALLY TRAVELED
HARD IMPROVED SURFACES
OTHER SURFACE IMPROVEMENTS
U. S. ROUTE 1940 STATE ROUTE

APPROXIMATE MEAN
DEFLECTION 1939
ANNUAL MAGNETIC CHANGE 2'
DECREASE

EUGENE OREG.
N 4400-W 12300/15

101674

78830