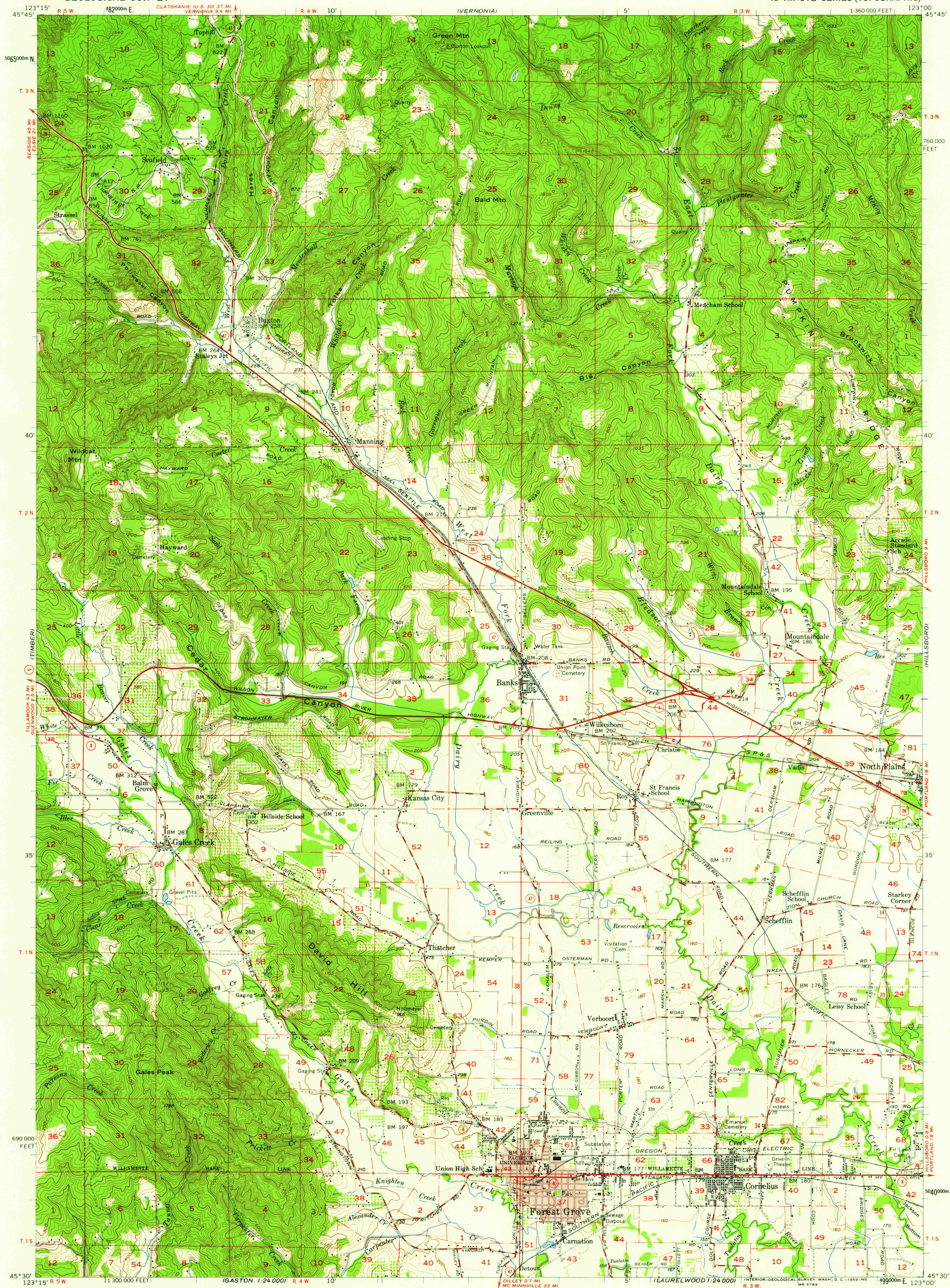
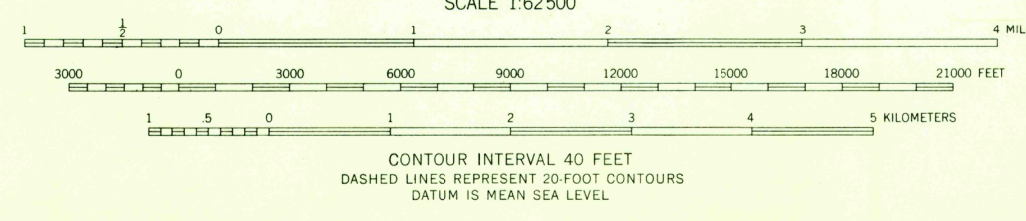
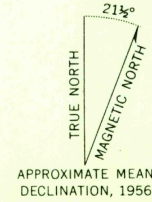


UNITED STATES
DEPARTMENT OF THE INTERIOR
GEOLOGICAL SURVEY

FOREST GROVE QUADRANGLE
OREGON-WASHINGTON CO.
15 MINUTE SERIES (TOPOGRAPHIC)



Mapped, edited, and published by the Geological Survey
Control by USGS, USC&GS, USCE, and State of Oregon
Topography from aerial photographs by photogrammetric methods
Aerial photographs taken 1953-54 Field check 1955-56
Polyconic projection. 1927 North American datum
10,000-foot grid based on Oregon coordinate system,
north zone
1000-meter Universal Transverse Mercator grid ticks,
zone 10, shown in blue
Red tint indicates areas in which only
landmark buildings are shown
Dashed land lines indicate approximate locations
Unchecked elevations are shown in brown



ROAD CLASSIFICATION
Heavy-duty ——— Light-duty ———
Medium-duty ——— Unimproved dirt ———
U. S. Route ——— State Route ———

THE SE QUARTER OF THIS AREA IS ALSO COVERED BY A
1:24,000 SCALE MAP OF FOREST GROVE 7.5 MINUTE
QUADRANGLE, SURVEYED 1956
FOREST GROVE, OREG.
N4530-W12300/15
1956

THIS MAP COMPLIES WITH NATIONAL MAP ACCURACY STANDARDS
FOR SALE BY U. S. GEOLOGICAL SURVEY, DENVER 2, COLORADO OR WASHINGTON 25, D. C.
A FOLDER DESCRIBING TOPOGRAPHIC MAPS AND SYMBOLS IS AVAILABLE ON REQUEST

USGS
Historical File
Topographic Division

U.S.G.S.
FILE COPY
TOPOGRAPHIC DIVISION

MAR - 6 1959
HISTORICAL
2440