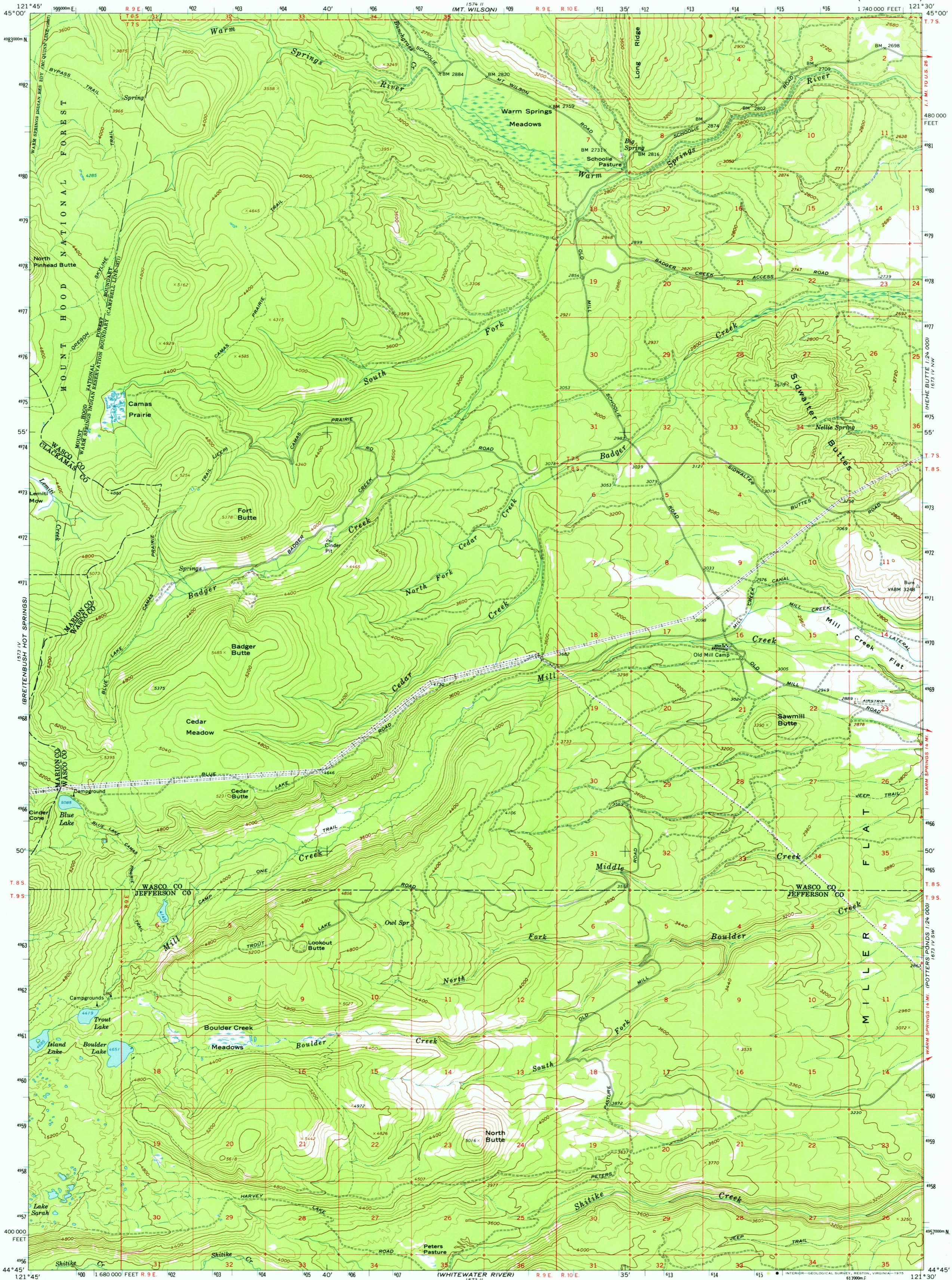
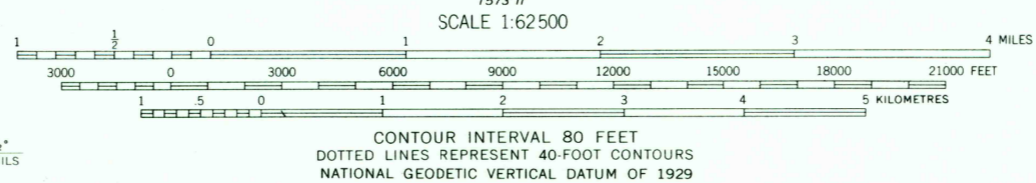


UNITED STATES  
DEPARTMENT OF THE INTERIOR  
GEOLOGICAL SURVEY

FORT BUTTE QUADRANGLE  
OREGON  
15 MINUTE SERIES (TOPOGRAPHIC)



Mapped, edited, and published by the Geological Survey  
Control by USGS and USC&GS  
Topography by photogrammetric methods from aerial  
photographs taken 1958. Field checked 1961.  
Polyconic projection. 1927 North American datum  
10,000-foot grid based on Oregon coordinate system, north zone  
1000-metre Universal Transverse Mercator grid ticks,  
zone 10, shown in blue  
Where omitted, land lines have not been established



ROAD CLASSIFICATION  
Light-duty ————  
Unimproved dirt - - - - -



FORT BUTTE, OREG.  
N4445—W12130/15

USGS  
HISTORICAL FILE  
TOPOGRAPHIC DIVISION

1961  
AMS 1573 I—SERIES V792

FOR SALE BY U. S. GEOLOGICAL SURVEY, DENVER, COLORADO 80225, OR RESTON, VIRGINIA 22092  
A FOLDER DESCRIBING TOPOGRAPHIC MAPS AND SYMBOLS IS AVAILABLE ON REQUEST

DEC 18 1975