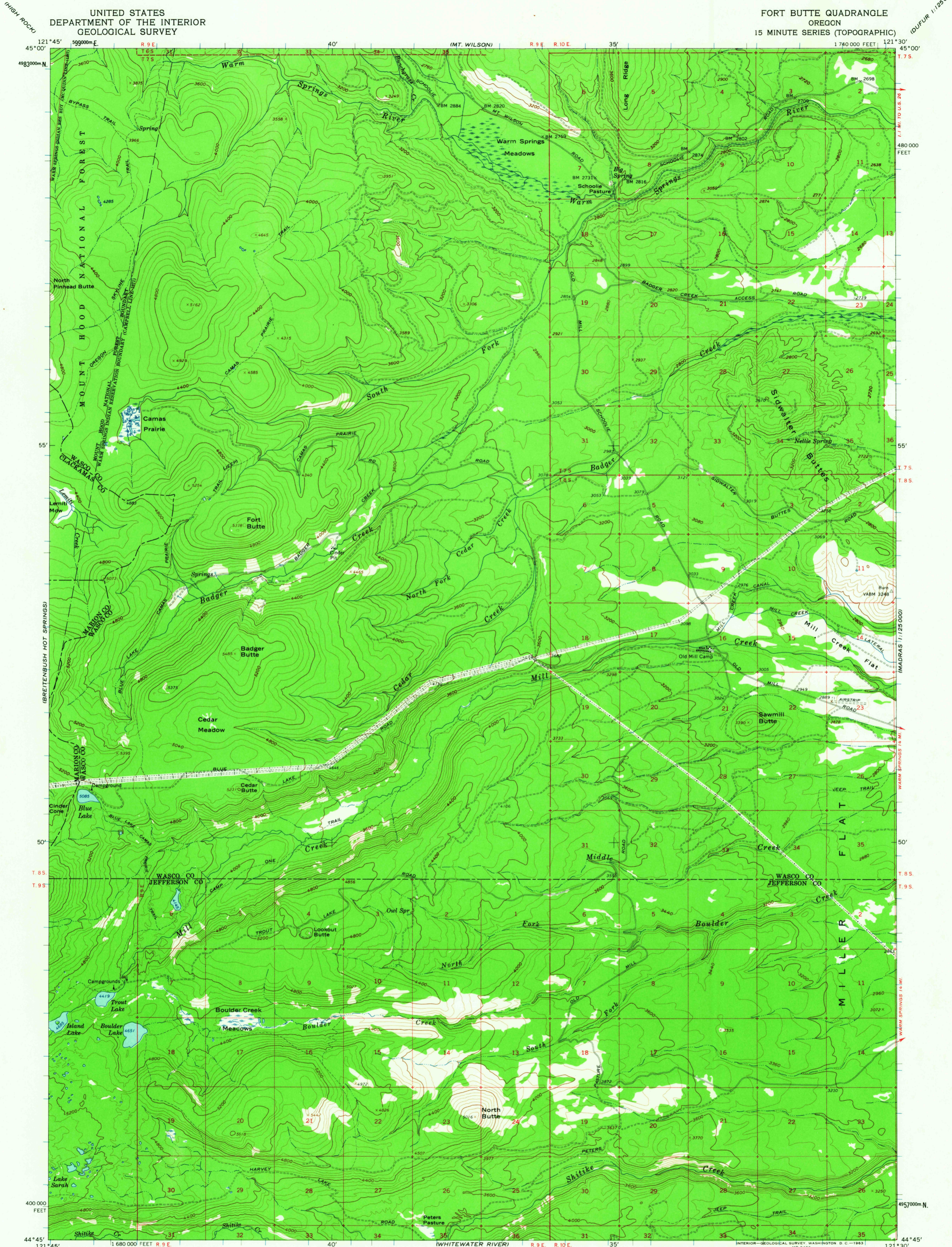
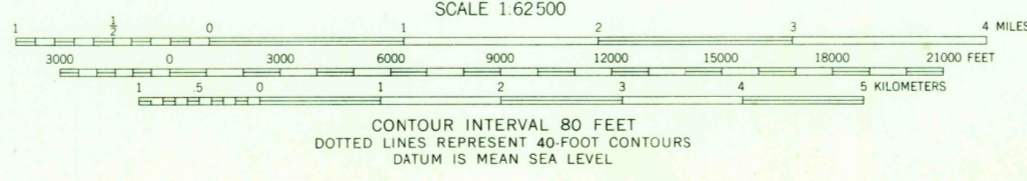
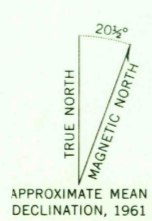


1:125,000  
DUFOR



Mapped, edited, and published by the Geological Survey  
Control by USGS and USC&GS  
Topography by photogrammetric methods from aerial  
photographs taken 1958. Field checked 1961  
Polyconic projection. 1927 North American datum  
10,000-foot grid based on Oregon coordinate system, north zone  
1000-meter Universal Transverse Mercator grid ticks,  
zone 10, shown in blue  
Where omitted, land lines have not been established



ROAD CLASSIFICATION  
Light-duty ——— Unimproved dirt - - - - -

FORT BUTTE, OREG.  
N4445-W12130/15

1961

FOR SALE BY U.S. GEOLOGICAL SURVEY, DENVER 25, COLORADO OR WASHINGTON 25, D. C.  
A FOLDER DESCRIBING TOPOGRAPHIC MAPS AND SYMBOLS IS AVAILABLE ON REQUEST

Historical File  
Topographic Division  
3140