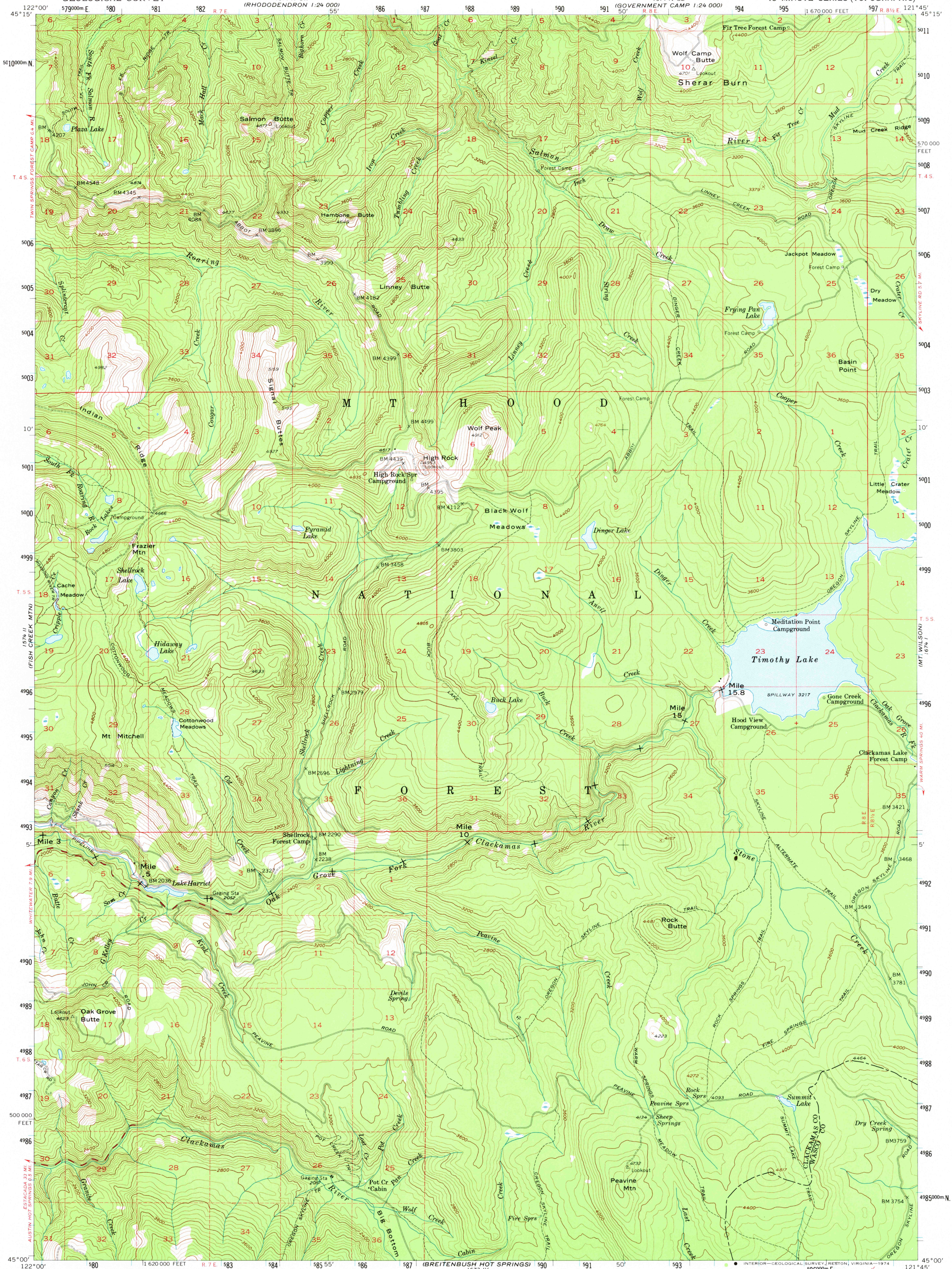


CHERRYVILLE

UNITED STATES
DEPARTMENT OF THE INTERIOR
GEOLOGICAL SURVEY

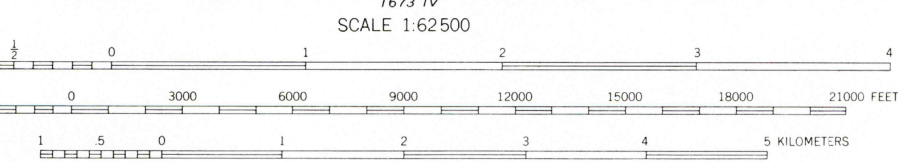
HIGH ROCK QUADRANGLE
OREGON
15 MINUTE SERIES (TOPOGRAPHIC)

MT. HOOD (SW
1:24 000)

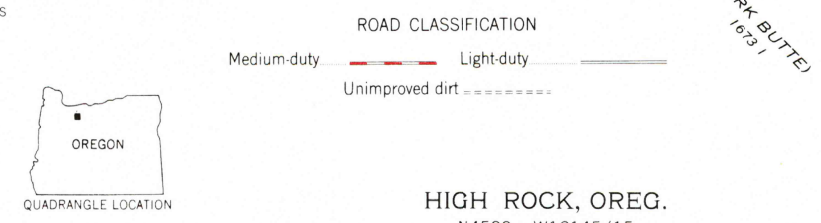


Mapped, edited, and published by the Geological Survey
Control by USGS and USC&GS
Topography from aerial photographs by multiplex methods
Aerial photographs taken 1954. Field check 1956
Polycyclic projection. 1927 North American datum
10,000-foot grid based on Oregon coordinate system,
north zone
1000-meter Universal Transverse Mercator grid ticks,
zone 10, shown in blue
Dashed land lines indicate approximate locations
Unchecked elevations are shown in brown

UTM GRID AND 1956 MAGNETIC NORTH
DECLINATION AT CENTER OF SHEET



SCALE 1:62 500
CONTOUR INTERVAL 80 FEET
DATUM IS MEAN SEA LEVEL



HIGH ROCK, OREG.
N4500-W12145/15
1956
AMS 1674 III-SERIES V792

THIS MAP COMPLIES WITH NATIONAL MAP ACCURACY STANDARDS
FOR SALE BY U. S. GEOLOGICAL SURVEY, DENVER, COLORADO 80225, OR RESTON, VIRGINIA 22092
A FOLDER DESCRIBING TOPOGRAPHIC MAPS AND SYMBOLS IS AVAILABLE ON REQUEST

USGS
HISTORICAL FILE
TOPOGRAPHIC DIVISION