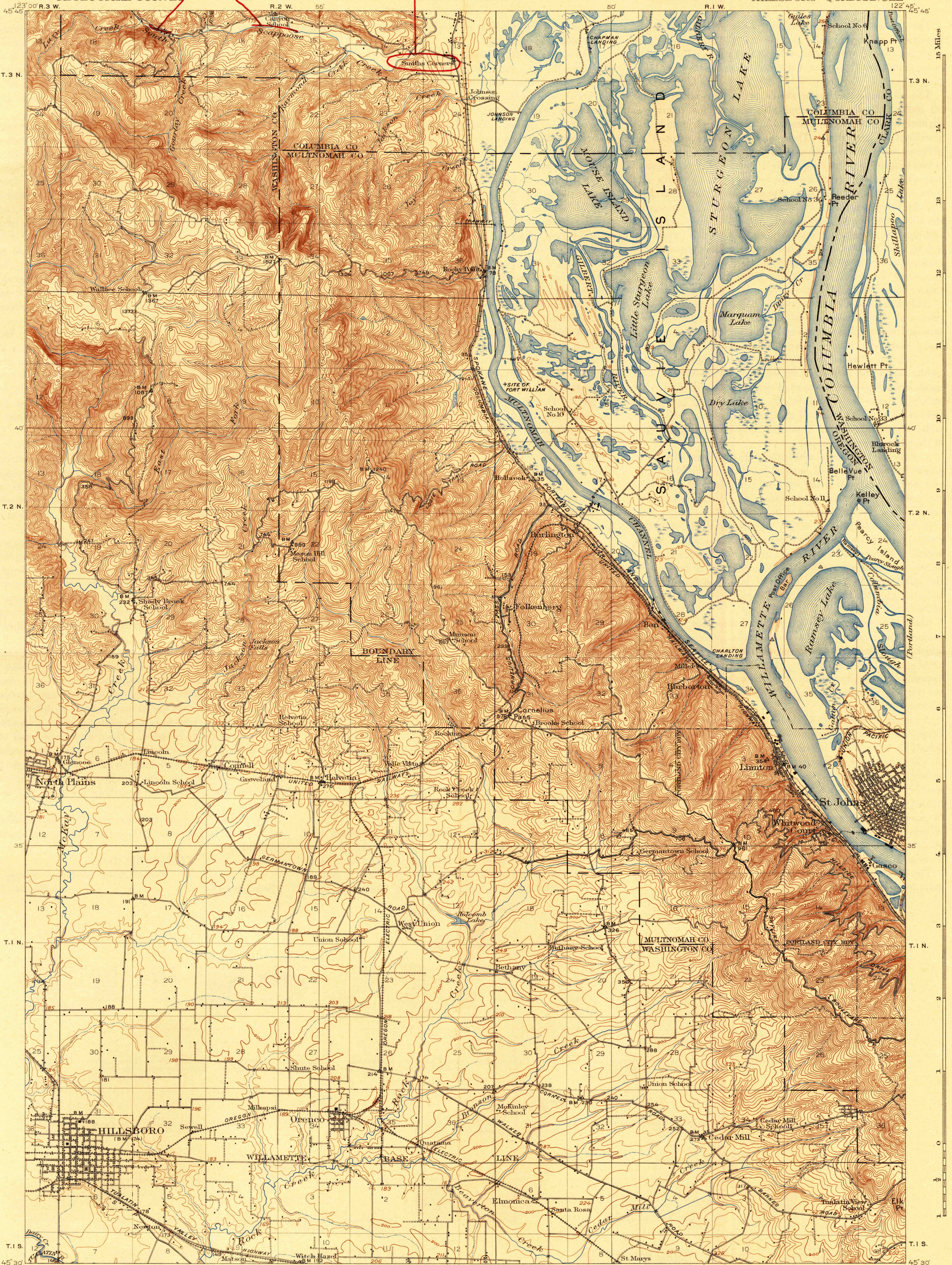


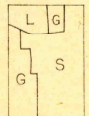
AMS edition shows this creek as
South Fork Scappoose Creek.
Should be South Scappoose Creek

Change Smiths Corner to
South Scappoose
STATE OF OREGON
REPRESENTED BY THE
STATE ENGINEER.

BGN



R. B. Marshall, Chief Geographer.
T. G. Gardine, Geographer in charge.
Topography by C. L. Sadler, Fred Graff, Jr.
and S. G. Lunde.
Control by Corps of Engineers U.S. Army,
U.S. Coast and Geodetic Survey, L. F. Biggs,
and E. M. Bandli.
Surveyed in 1915.



Scale 62500
0 1 2 3 4 5 Miles
0 1 2 3 4 5 Kilometers
Contour interval 25 feet.
Datum is mean sea level.

Edition of 1918, reprinted 1943
Polyconic projection. North American datum

HILLSBORO, OREG.-WASH.
N4530-W12245/E15