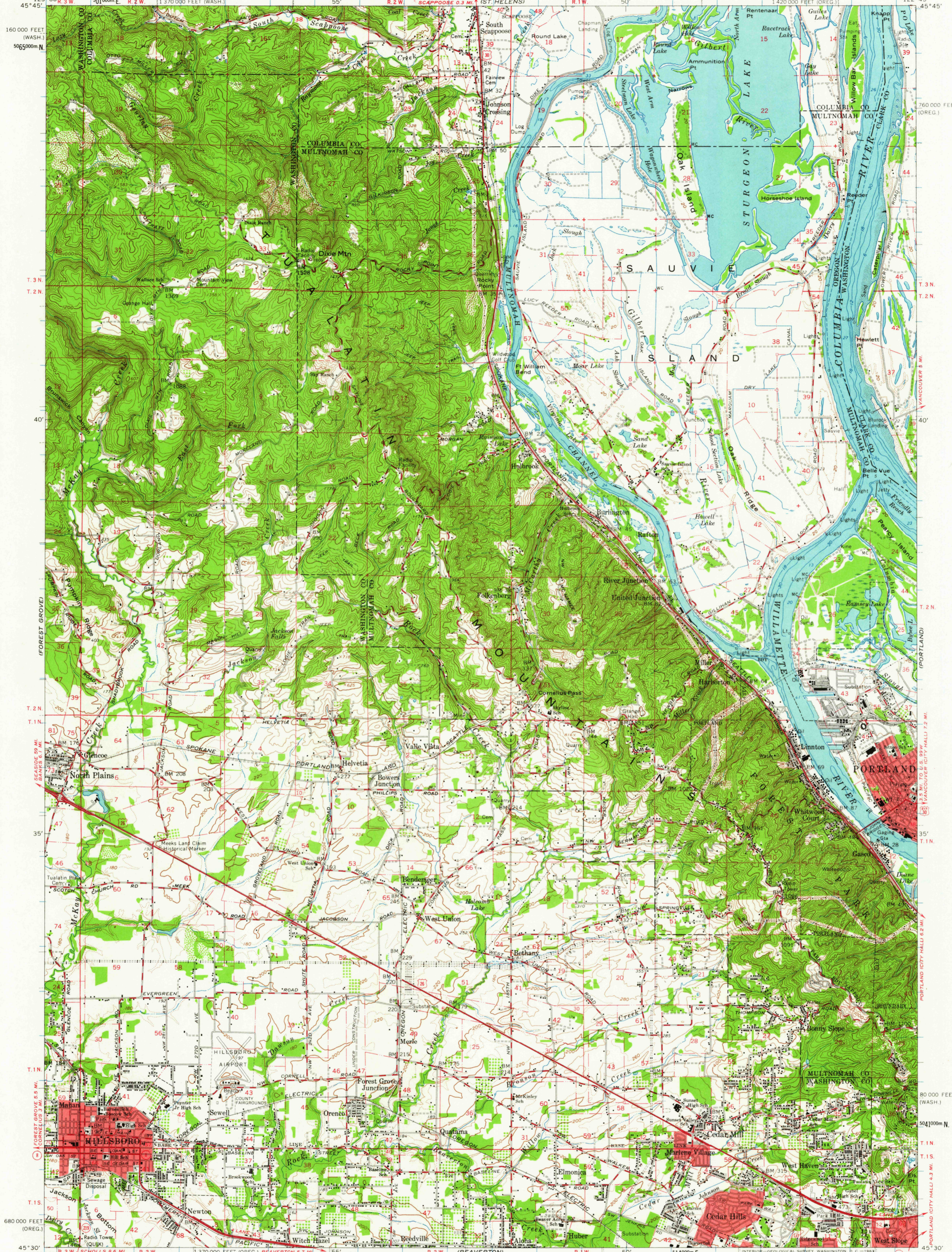


UNITED STATES
DEPARTMENT OF THE INTERIOR
GEOLOGICAL SURVEY

HILLSBORO QUADRANGLE
OREGON-WASHINGTON
15 MINUTE SERIES (TOPOGRAPHIC)



Maped, edited, and published by the Geological Survey
Control by USGS, USC&GS, USCE, and State of Oregon
Compiled in 1961 from 1:24 000-scale maps dated 1961
Selected hydrographic data compiled from USC&GS Charts
6154 (1959) and 6155 (1959)
This information is not intended for navigational purposes
Polyconic projection. 1927 North American datum,
100,000-foot grids based on Oregon coordinate system, north zone,
and Washington coordinate system, south zone
1000-meter Universal Transverse Mercator grid ticks,
zone 10, shown in blue
Red tint indicates areas in which only landmark buildings are shown

SCALE 1:62,500

0 3000 6000 9000 12000 15000 18000 21000 FEET
0 3 6 9 12 15 18 21 KILOMETERS

CONTOUR INTERVAL 40 FEET
DOTTED LINES REPRESENT 20-FOOT CONTOURS
DATUM IS MEAN SEA LEVEL
DEPTH CURVES AND SOUNDINGS IN FEET - COLUMBIA RIVER DATUM
SHORELINE SHOWN REPRESENTS THE APPROXIMATE LINE OF MEAN HIGH WATER
THE MEAN RANGE OF TIDE IS APPROXIMATELY 2 FEET

THIS MAP COMPLIES WITH NATIONAL MAP ACCURACY STANDARDS
FOR SALE BY U.S. GEOLOGICAL SURVEY, DENVER 25, COLORADO OR WASHINGTON 25, D. C.
A FOLDER DESCRIBING TOPOGRAPHIC MAPS AND SYMBOLS IS AVAILABLE ON REQUEST

USGS
Historical File
Topographic Division

ROAD CLASSIFICATION

- Heavy-duty
- Light-duty
- Medium-duty
- Unimproved dirt

U.S. Route State Route

QUADRANGLE LOCATION

HILLSBORO, OREG.-WASH.
N4530-W12245/15

1961

HISTORICAL

MAR 26 1963

4165