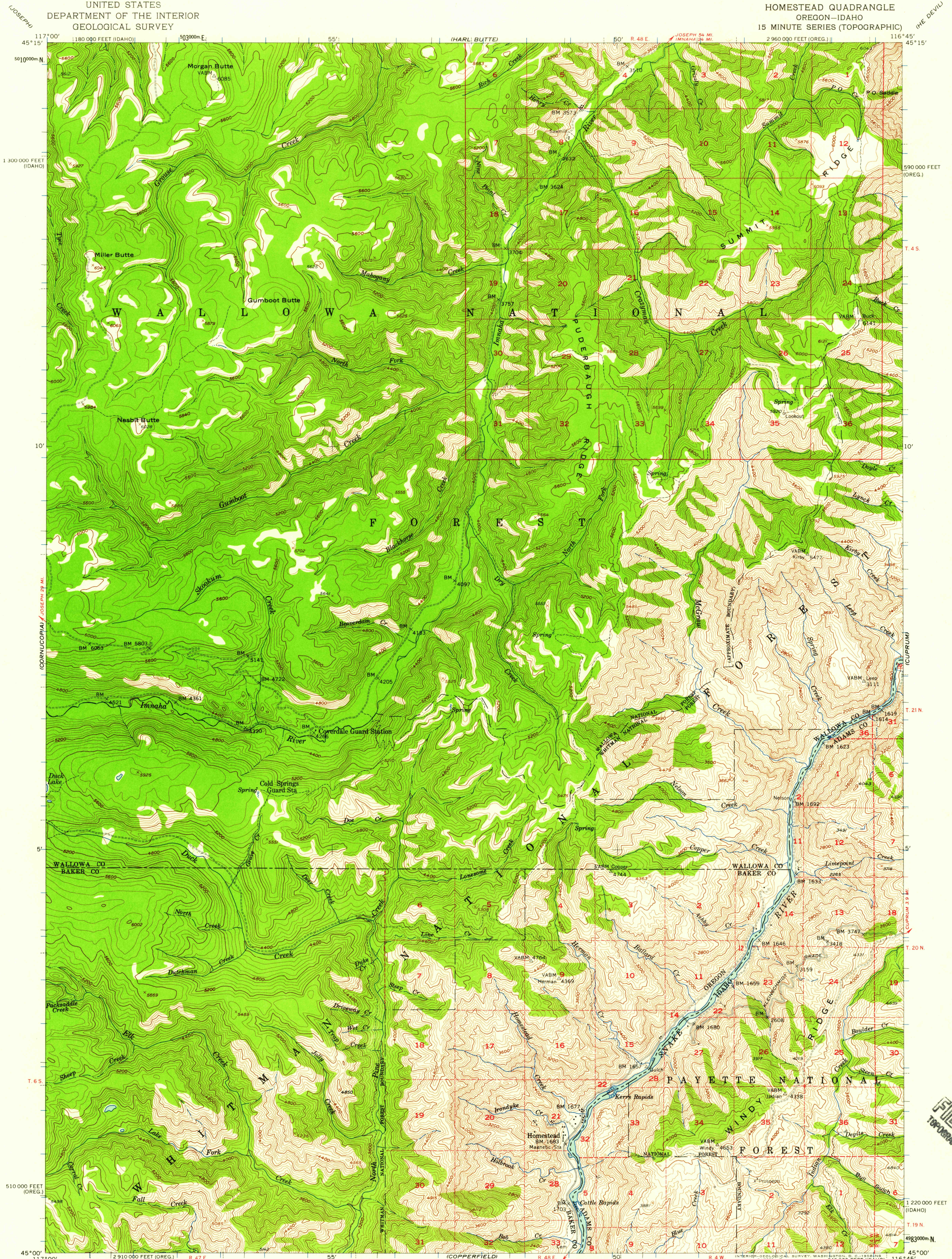
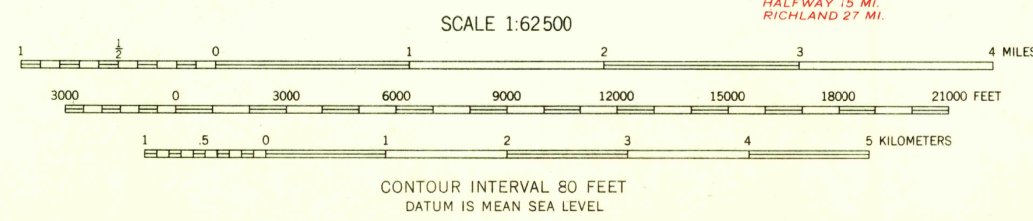


UNITED STATES
DEPARTMENT OF THE INTERIOR
GEOLOGICAL SURVEY

HOMESTEAD QUADRANGLE
OREGON-IDAHO
15 MINUTE SERIES (TOPOGRAPHIC)



Mapped, edited, and published by the Geological Survey
Control by USGS and USC&GS
Topography from aerial photographs by multiplex methods
Aerial photographs taken 1953. Field check 1957
Polyconic projection. 1927 North American datum
10,000-foot grids based on Oregon coordinate system,
north zone and Idaho coordinate system, west zone
1000-meter Universal Transverse Mercator grid ticks,
zone 11 shown in blue
Dashed land lines indicate approximate locations
Unchecked elevations are shown in brown



USGS
Historical File
Topographic Division
ROAD CLASSIFICATION
Light-duty Unimproved dirt
HOMESTEAD, OREG.-IDAHO
N4500—W11645/15
1957

U.S.G.S.
FILE COPY
TOPOGRAPHIC DIVISION

HISTORICAL

THIS MAP COMPLIES WITH NATIONAL MAP ACCURACY STANDARDS
FOR SALE BY U. S. GEOLOGICAL SURVEY, DENVER 2, COLORADO OR WASHINGTON 25, D. C.
A FOLDER DESCRIBING TOPOGRAPHIC MAPS AND SYMBOLS IS AVAILABLE ON REQUEST

NOV 13 1958

1920