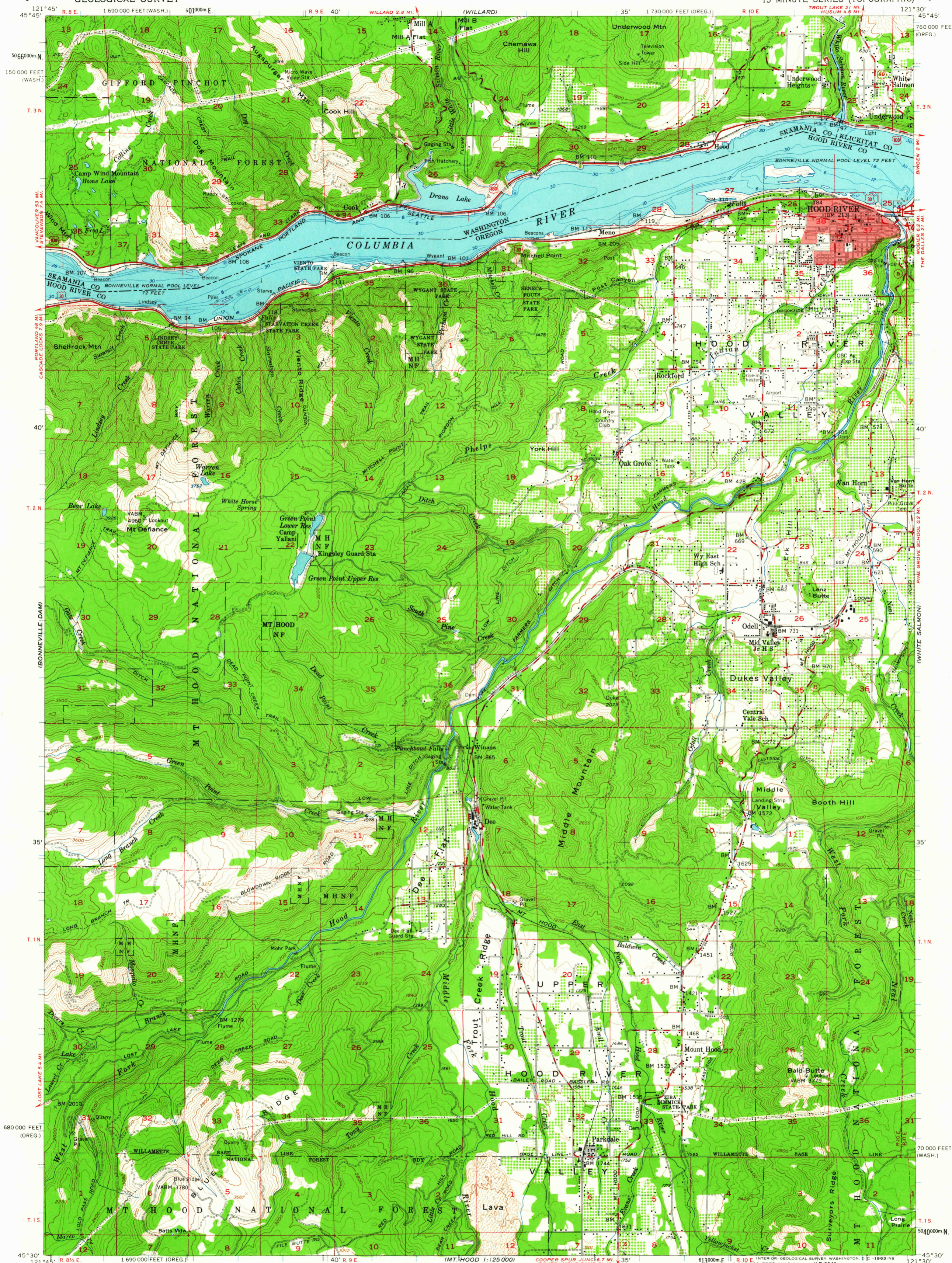


UNITED STATES  
DEPARTMENT OF THE INTERIOR  
GEOLOGICAL SURVEY

HOOD RIVER QUADRANGLE  
OREGON-WASHINGTON  
15 MINUTE SERIES (TOPOGRAPHIC)



Mapped, edited, and published by the Geological Survey  
Control by USGS and USC&GS  
Topography from aerial photographs by ER-55 plotter  
Aerial photographs taken 1955. Field check 1957  
Hydrography compiled from USC&GS chart 6157 (1953)  
Polyconic projection. 1927 North American datum  
10,000-foot grids based on Oregon coordinate system,  
north zone and Washington coordinate system, south zone  
1000-meter Universal Transverse Mercator grid ticks,  
zone 10, shown in blue  
Oregon-Washington boundary by interstate agreement  
December 1956. Subject to ratification  
Red tint indicates areas in which only landmark buildings are shown  
Dashed land lines indicate approximate locations  
Unchecked elevations are shown in brown

SCALE 1:62,500  
CONTOUR INTERVAL 80 FEET  
DOTTED LINES REPRESENT 40-FOOT CONTOURS  
DATUM IS MEAN SEA LEVEL  
DEPTH CURVES IN FEET—DATUM IS BONNEVILLE NORMAL POOL LEVEL ELEVATION 72 FEET  
THIS MAP COMPLIES WITH NATIONAL MAP ACCURACY STANDARDS  
FOR SALE BY U. S. GEOLOGICAL SURVEY, DENVER 25, COLORADO OR WASHINGTON 25, D. C.  
A FOLDER DESCRIBING TOPOGRAPHIC MAPS AND SYMBOLS IS AVAILABLE ON REQUEST

ROAD CLASSIFICATION  
Heavy-duty ——— Light-duty ———  
Medium-duty ——— Unimproved dirt ———  
U. S. Route ——— State Route ———  
USGS Historical File  
Topographic Division  
HOOD RIVER, OREG.—WASH.  
N4530—W12130/15  
1957

MT. HOOD 1:125,000

COEUR D'ALENE 1:125,000  
MAY - 2-1963  
HISTORICAL

5660