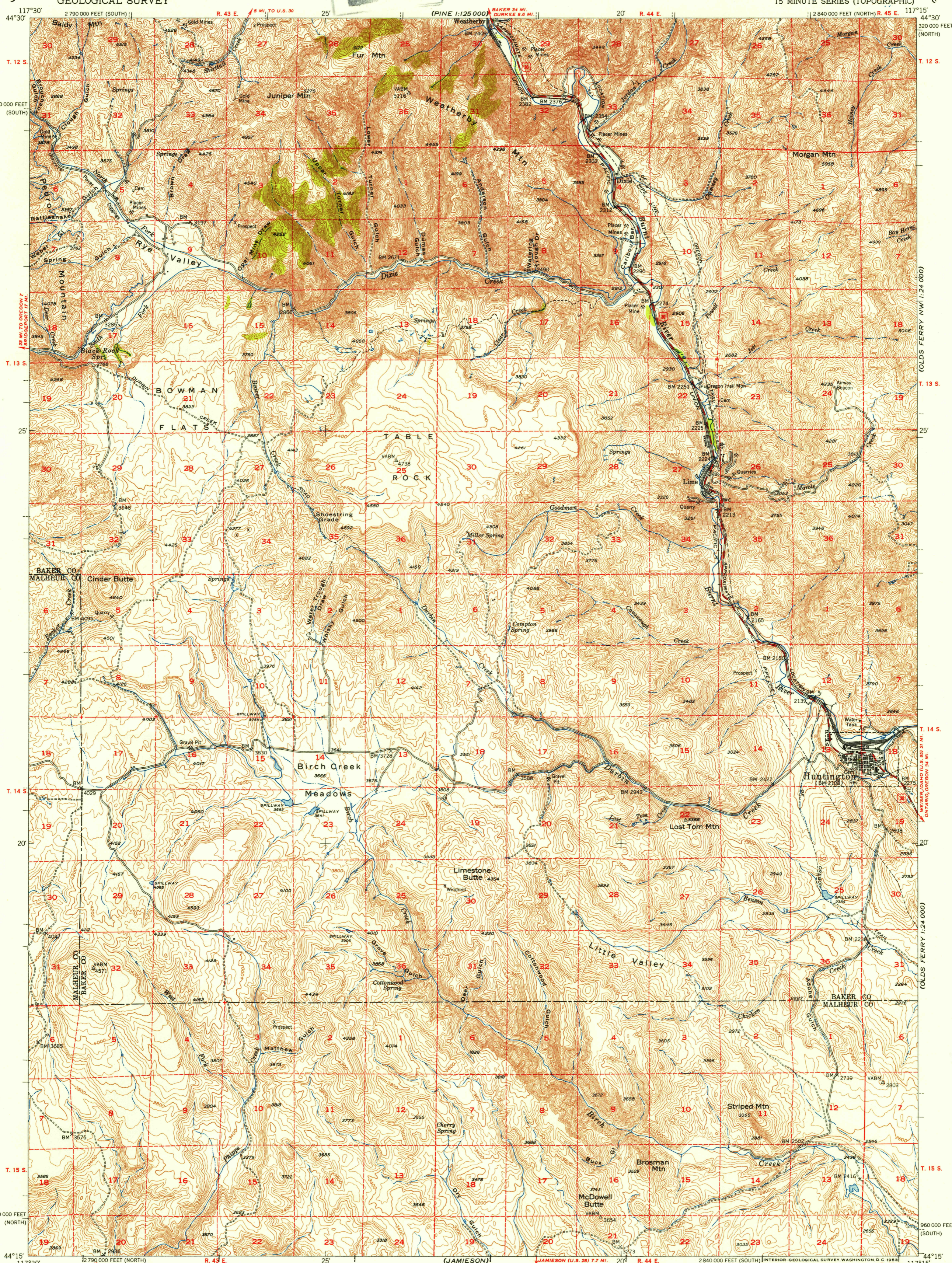


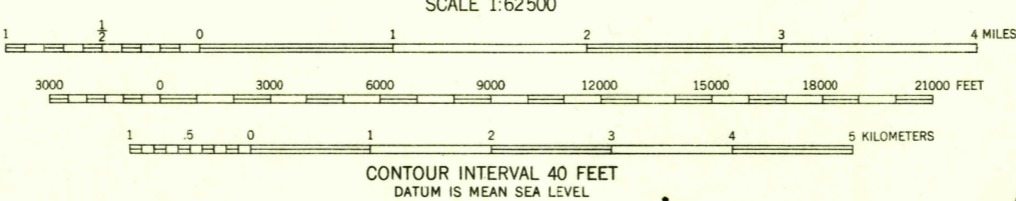
UNITED STATES
DEPARTMENT OF THE INTERIOR
GEOLOGICAL SURVEY

HUNTINGTON QUADRANGLE
OREGON
15 MINUTE SERIES (TOPOGRAPHIC)

U.S.G.S.
FILE COPY

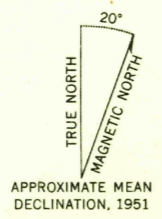


Mapped, edited, and published by the Geological Survey
Control by USGS and USC&GS
Topography from aerial photographs by multiplex methods
Aerial photographs taken 1946. Field check 1951
Polyconic projection. 1927 North American datum
10,000-foot grids based on Oregon coordinate system,
north and south zones
Dashed land lines indicate approximate locations



ROAD CLASSIFICATION

Heavy-duty	4 LANE 6 LANE	Light-duty
Medium-duty	2 LANE 4 LANE	Unimproved dirt
U.S. Route		State Route



THIS MAP COMPLIES WITH NATIONAL MAP ACCURACY STANDARDS
FOR SALE BY U.S. GEOLOGICAL SURVEY, FEDERAL CENTER, DENVER, COLORADO OR WASHINGTON 25, D.C.
A FOLDER DESCRIBING TOPOGRAPHIC MAPS AND SYMBOLS IS AVAILABLE ON REQUEST

USGS
Historical File
Topographic Division
HUNTINGTON, OREG.
N4415-W11715/15
1951

HISTORICAL