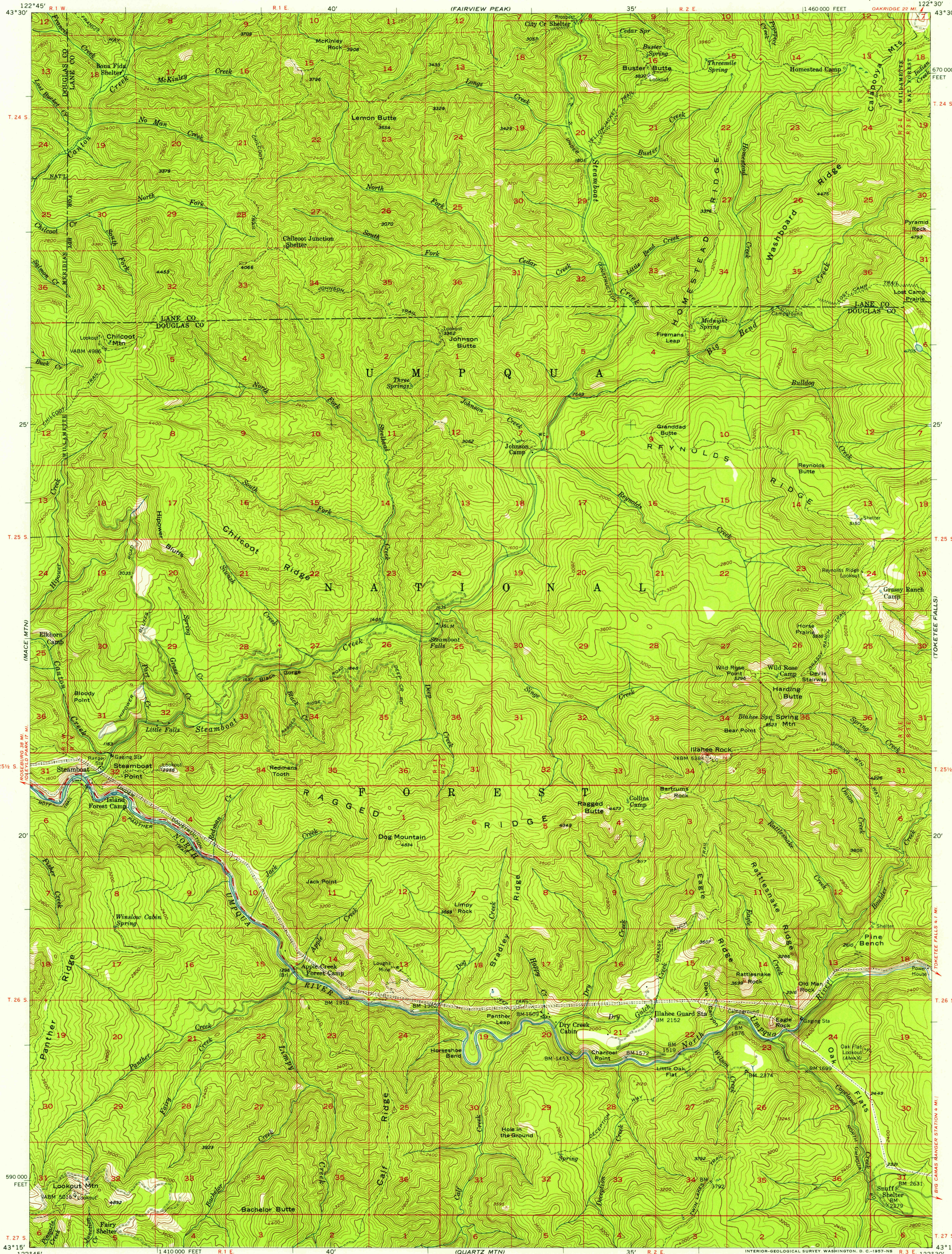


(CULP CREEK)

UNITED STATES
DEPARTMENT OF THE INTERIOR
GEOLOGICAL SURVEY

ILLAHEE ROCK QUADRANGLE
OREGON
15 MINUTE SERIES (TOPOGRAPHIC)

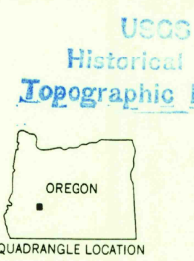
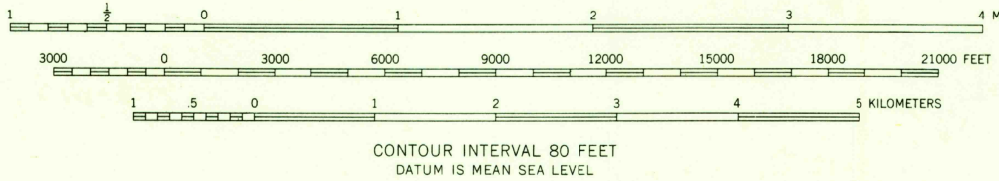
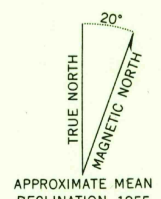
(OAK RIDGE)



U.S.G.S.
FILE COPY

U.S.G.S.
FILE COPY

Mapped, edited, and published by the Geological Survey
Control by USGS and USC&GS
Topography from aerial photographs by multiplex methods
Aerial photographs taken 1952. Field check 1955
Polyconic projection. 1927 North American datum
10,000-foot grid based on Oregon coordinate system, south zone
Dashed land lines indicate approximate locations
Unchecked elevations are shown in brown



ROAD CLASSIFICATION
Medium-duty ——— Light-duty ———
Unimproved dirt ———

ILLAHEE ROCK, OREG.
N4315-W12230/15

1955

FOR SALE BY U. S. GEOLOGICAL SURVEY, DENVER 2, COLORADO OR WASHINGTON 25, D. C.
A FOLDER DESCRIBING TOPOGRAPHIC MAPS AND SYMBOLS IS AVAILABLE ON REQUEST

HISTORICAL

JUL 26 1955