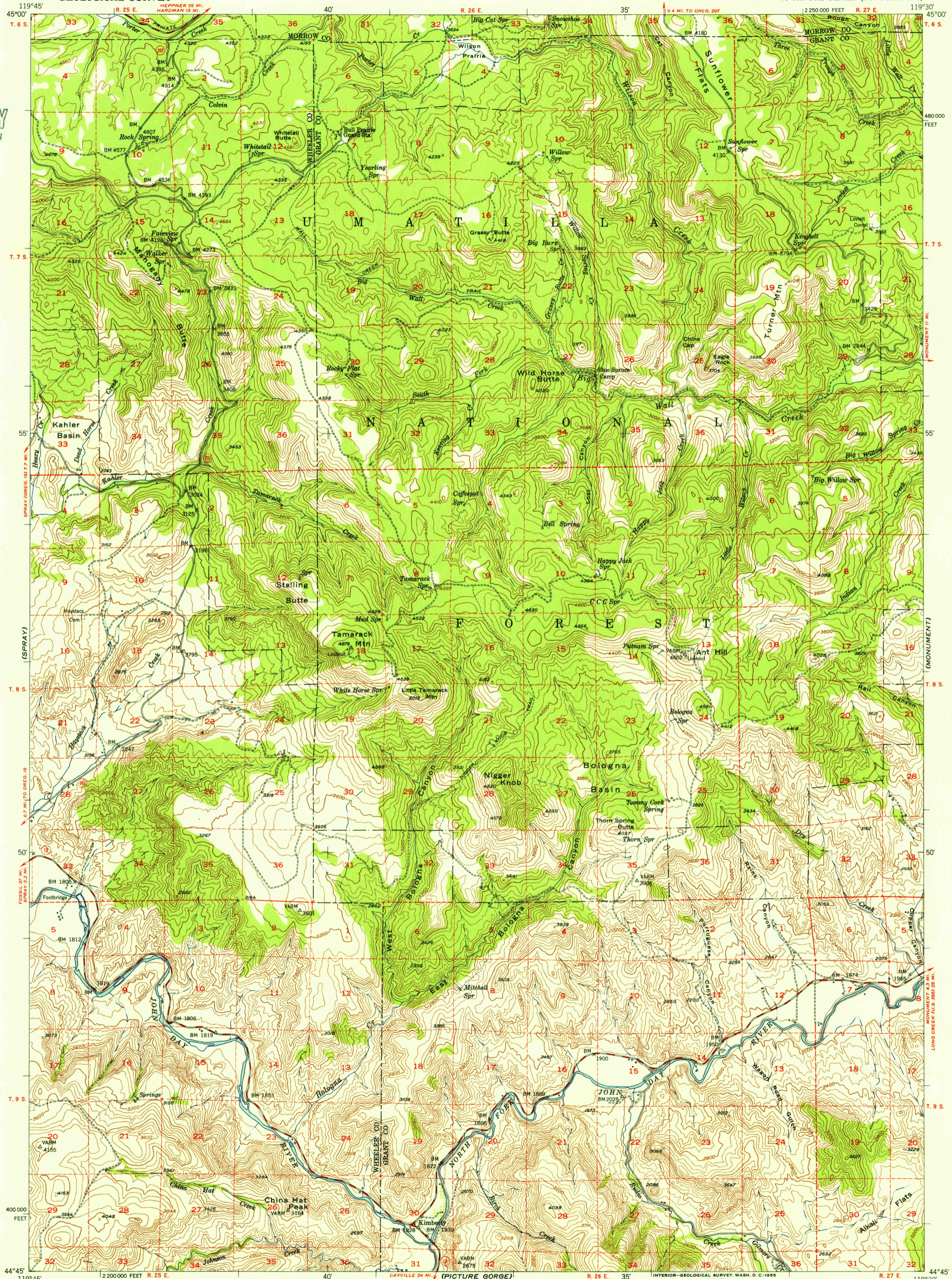
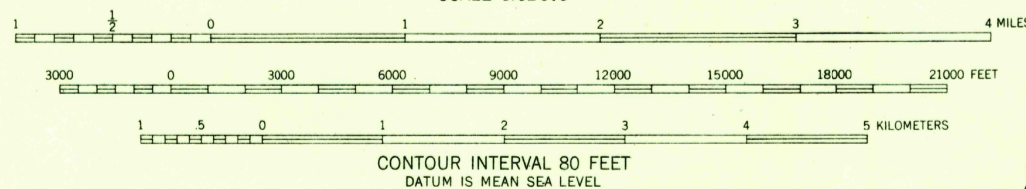
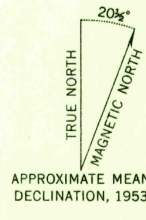


U.S.G.S.  
FILE COPY  
TOPOGRAPHIC DIVISION



Richmond)  
Mapped, edited, and published by the Geological Survey  
Control by USGS and USC&GS  
Topography from aerial photographs by multiplex methods  
Aerial photographs taken 1946. Field check 1953  
Polyconic projection. 1927 North American datum  
10,000-foot grid based on Oregon coordinate system, north zone  
Dashed land lines indicate approximate locations  
Unchecked elevations are shown in brown



THIS MAP COMPLIES WITH NATIONAL MAP ACCURACY STANDARDS  
FOR SALE BY U. S. GEOLOGICAL SURVEY, FEDERAL CENTER, DENVER, COLORADO OR WASHINGTON 25, D. C.  
A FOLDER DESCRIBING TOPOGRAPHIC MAPS AND SYMBOLS IS AVAILABLE ON REQUEST

ROAD CLASSIFICATION

Heavy-duty	4 LANE 16 LANE	Light-duty	2 LANE 16 LANE
Medium-duty	4 LANE 16 LANE	Unimproved dirt	-----

U. S. Route (square symbol)  
State Route (circle symbol)



USGS  
Historical File  
Topographic Division  
KIMBERLY, OREG.  
N4445-W11930/15  
1953

U.S.G.S.  
FILE COPY  
TOPOGRAPHIC DIVISION

AUG 1955  
AUG 1955  
2575