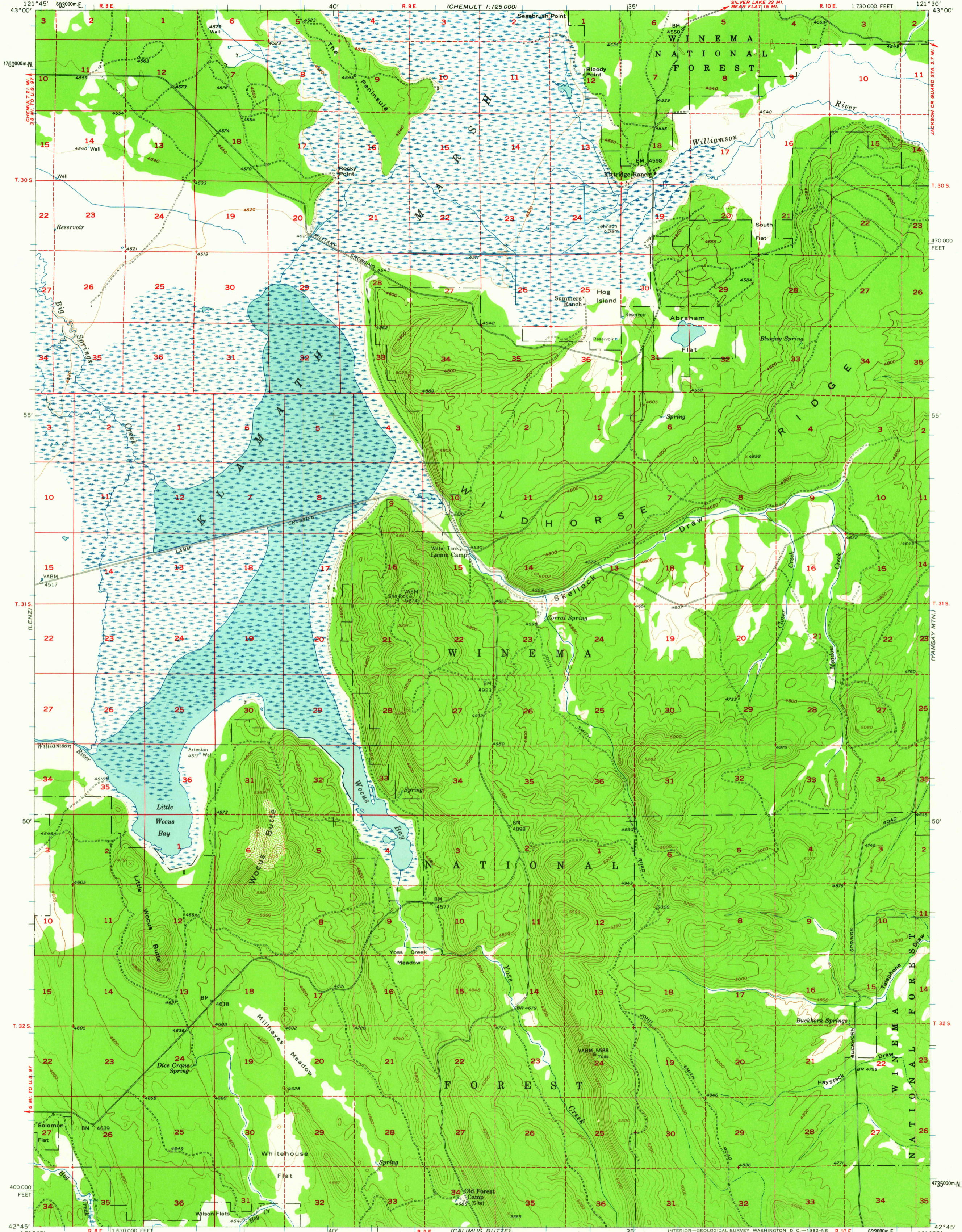
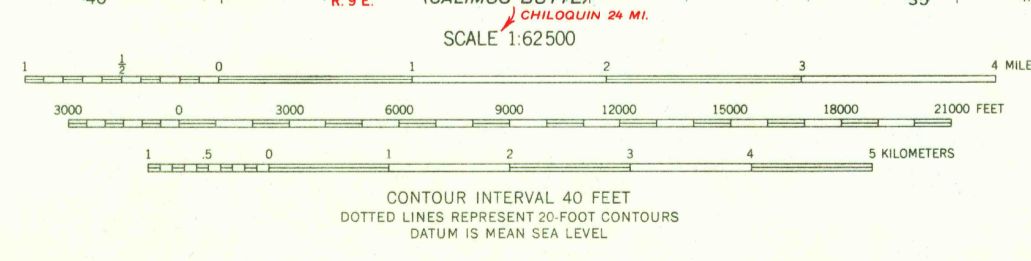


UNITED STATES
DEPARTMENT OF THE INTERIOR
GEOLOGICAL SURVEY

KLAMATH MARSH QUADRANGLE
OREGON—KLAMATH CO.
15 MINUTE SERIES (TOPOGRAPHIC)



Mapped, edited, and published by the Geological Survey
Control by USGS and USC&GS
Topography from aerial photographs by ER-55 plotter and by plane-table surveys 1957. Aerial photographs taken 1955
Polyconic projection. 1927 North American datum
10,000-foot grid based on Oregon coordinate system, south zone
1000-meter Universal Transverse Mercator grid ticks, zone 10, shown in blue
Dashed land lines indicate approximate locations
Unchecked elevations are shown in brown



USGS ROAD CLASSIFICATION
Unimproved dirt

TOPOGRAPHIC DIVISION

U.S.G.S. FILE COPY TOPOGRAPHIC DIVISION

OREGON
QUADRANGLE LOCATION

KLAMATH MARSH, OREG.
N4245-W12130/15
1957

THIS MAP COMPLIES WITH NATIONAL MAP ACCURACY STANDARDS
FOR SALE BY U.S. GEOLOGICAL SURVEY, DENVER 25, COLORADO OR WASHINGTON 25, D. C.
A FOLDER DESCRIBING TOPOGRAPHIC MAPS AND SYMBOLS IS AVAILABLE ON REQUEST

5340

OCT 22 1962