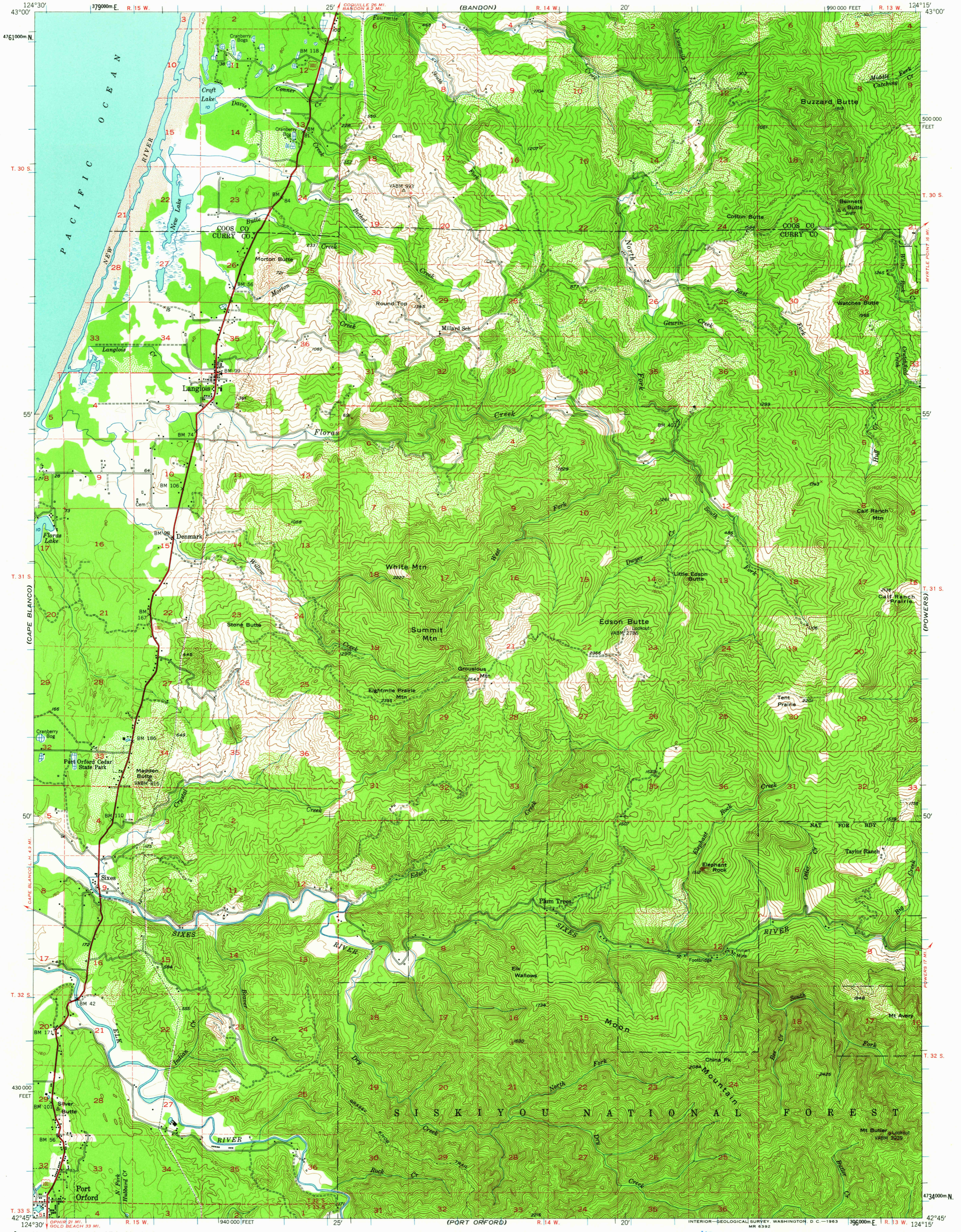
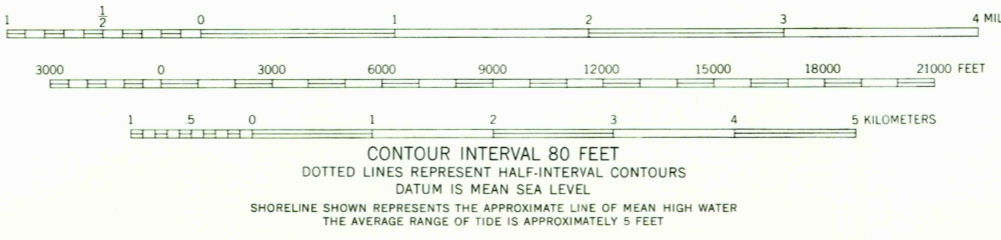
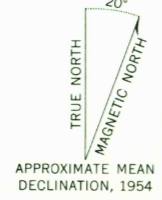


(COQUILLE)



Mapped, edited, and published by the Geological Survey  
Control by USGS and USC&GS  
Topography from aerial photographs by multiplex methods  
Aerial photographs taken 1952. Field check 1954  
Polyconic projection. 1927 North American datum  
10,000-foot grid based on Oregon coordinate system, south zone  
Dashed land lines indicate approximate locations  
Unchecked elevations are shown in brown  
1000-meter Universal Transverse Mercator grid ticks,  
zone 10, shown in blue



USGS  
Historical File  
Topographic Division

ROAD CLASSIFICATION  
1963  
Heavy-duty — Light-duty  
Unimproved dirt  
U.S. Route



LANGLOIS, ORE.  
N4245-W12415/15

1954

FOR SALE BY U.S. GEOLOGICAL SURVEY, DENVER 25, COLORADO OR WASHINGTON 25, D. C.  
A FOLDER DESCRIBING TOPOGRAPHIC MAPS AND SYMBOLS IS AVAILABLE ON REQUEST

U.S.G.S. 3800  
TOPOGRAPHIC DIVISION

AUG - 6 1983