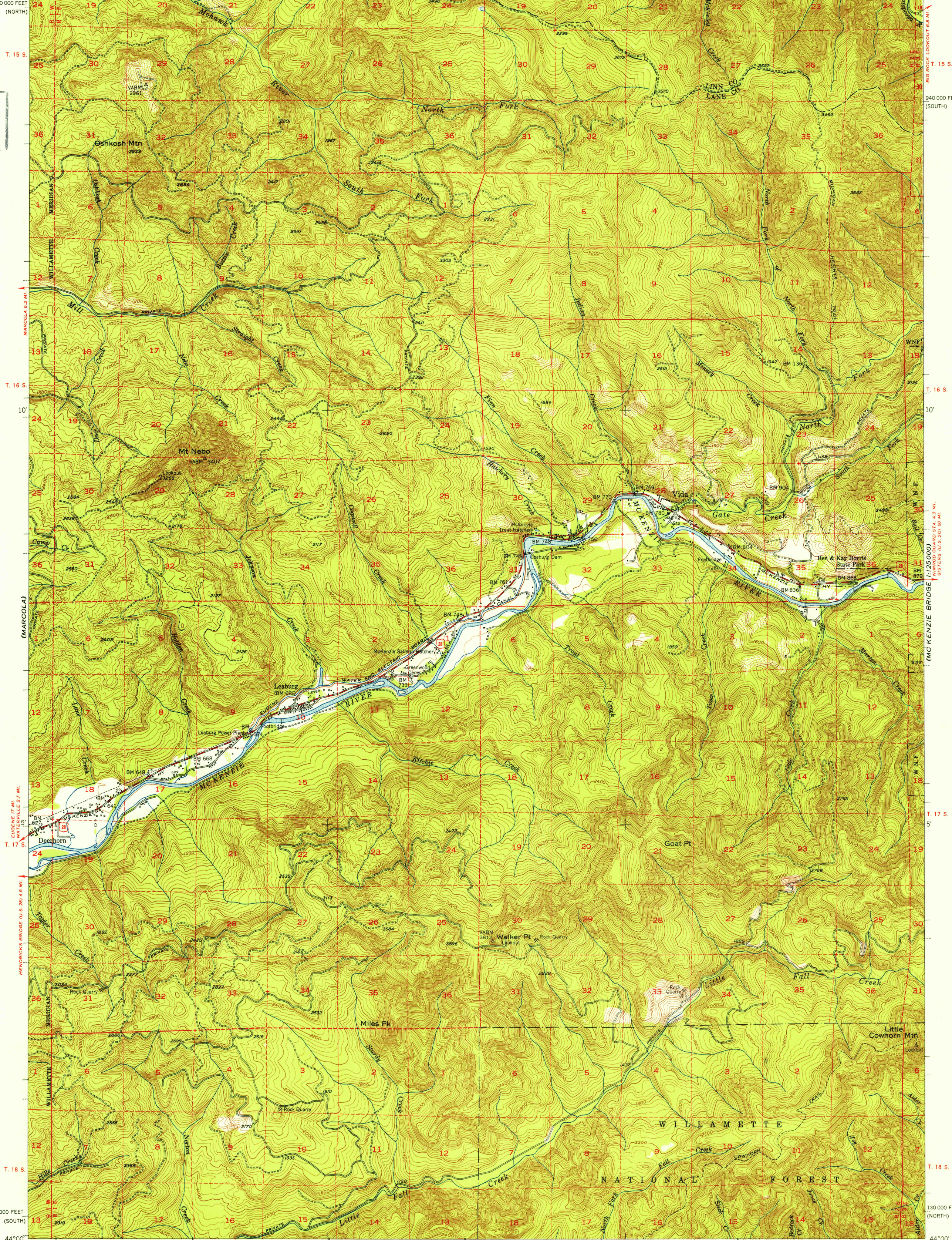
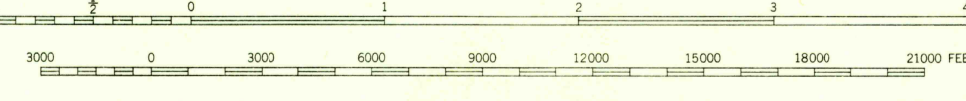


U. S. G. S.
FILE COPY
Inspection and Editing.



Mapped, edited, and published by the Geological Survey
Control by USGS and USC&GS
Topography from aerial photographs by multiplex methods
Aerial photographs taken 1950. Field check 1951
Polyconic projection. 1927 North American datum
10,000-foot grid based on Oregon coordinate system,
north and south zones
Dashed land lines indicate approximate locations



ROAD CLASSIFICATION
Heavy-duty 4 LANE 16 LANE Light-duty
Medium-duty 4 LANE 16 LANE Unimproved dirt
U.S. Route State Route

USGS
Historical Photo
Topographic Division
FILE COPY
Inspection and Editing.

LEABURG, OREG.
N4400-W12230/15
1951

FOR SALE BY U. S. GEOLOGICAL SURVEY, FEDERAL CENTER, DENVER, COLORADO OR WASHINGTON 25, D. C.
A FOLDER DESCRIBING TOPOGRAPHIC MAPS AND SYMBOLS IS AVAILABLE ON REQUEST

DEC 12 1952 2090