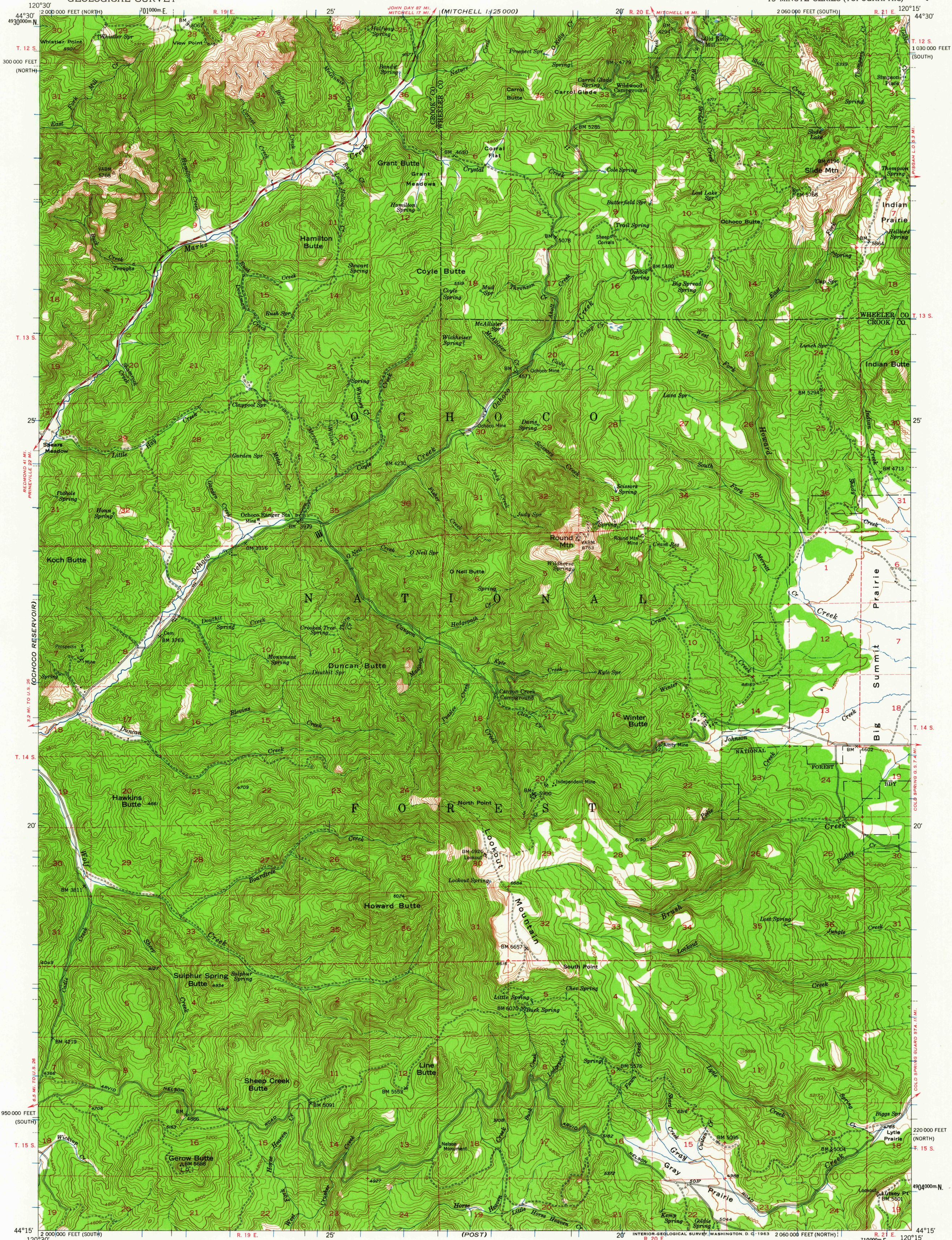
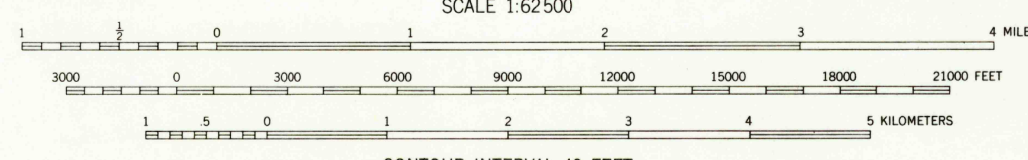
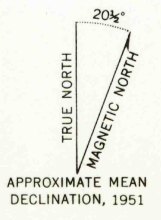


(MITCHELL 1:25 000)



Maped, edited, and published by the Geological Survey
Control by USGS and USC&GS
Topography from aerial photographs by multiplex methods
Aerial photographs taken 1943 and 1950
Advance field check 1951
Polyconic projection, 1927 North American datum
10,000-foot grids based on Oregon coordinate system,
north and south zones
Dashed land lines indicate approximate locations
Unchecked elevations are shown in brown
1000-meter Universal Transverse Mercator grid ticks,
zone 10, shown in blue



LOOKOUT MTN., OREG.
N4415-W12015/15
1951

FOR SALE BY U. S. GEOLOGICAL SURVEY, DENVER 25, COLORADO OR WASHINGTON 25, D. C.
A FOLDER DESCRIBING TOPOGRAPHIC MAPS AND SYMBOLS IS AVAILABLE ON REQUEST

(EAGLE ROCK)

NOV - 5 1963

2570