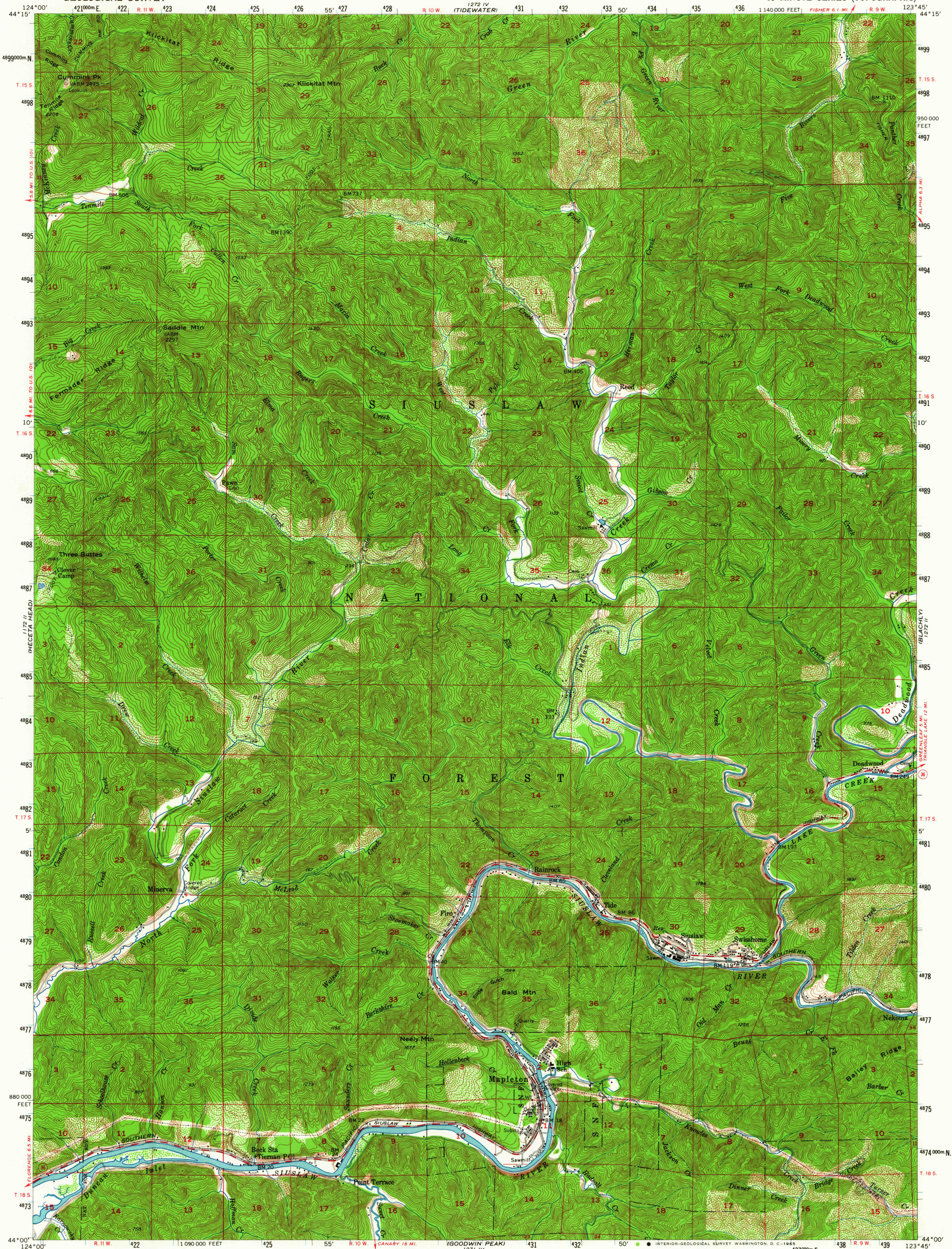
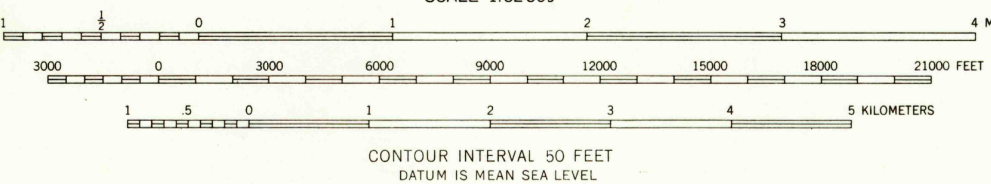
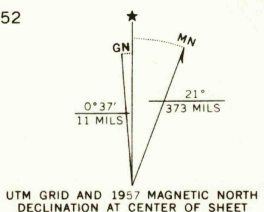


UNITED STATES
DEPARTMENT OF THE INTERIOR
GEOLOGICAL SURVEY

MAPLETON QUADRANGLE
OREGON—LANE CO.
15 MINUTE SERIES (TOPOGRAPHIC)



Mapped, edited, and published by the Geological Survey
Control by USGS and USC&GS
Topography by planetable surveys 1918, 1919 and 1937
Culture revised from aerial photographs taken 1951 and 1952
Field check 1957
Polyconic projection. 1927 North American datum
10,000-foot grid based on Oregon coordinate system,
south zone
1000-meter Universal Transverse Mercator grid ticks
zone 10, shown in blue



ROAD CLASSIFICATION
Medium-duty ——— Light-duty ———
Unimproved dirt - - - - -
State Route ○

USGS U.S. GEOLOGICAL SURVEY
Historical File
Topographic Division
TOPOGRAPHIC DIVISION

MAPLETON, OREG.
N4400—W12345/15

1957
AMS 1272 III—SERIES V792

FOR SALE BY U. S. GEOLOGICAL SURVEY, DENVER, COLORADO 80225 OR WASHINGTON, D. C. 20242
A FOLDER DESCRIBING TOPOGRAPHIC MAPS AND SYMBOLS IS AVAILABLE ON REQUEST

APR 8 1965

4640