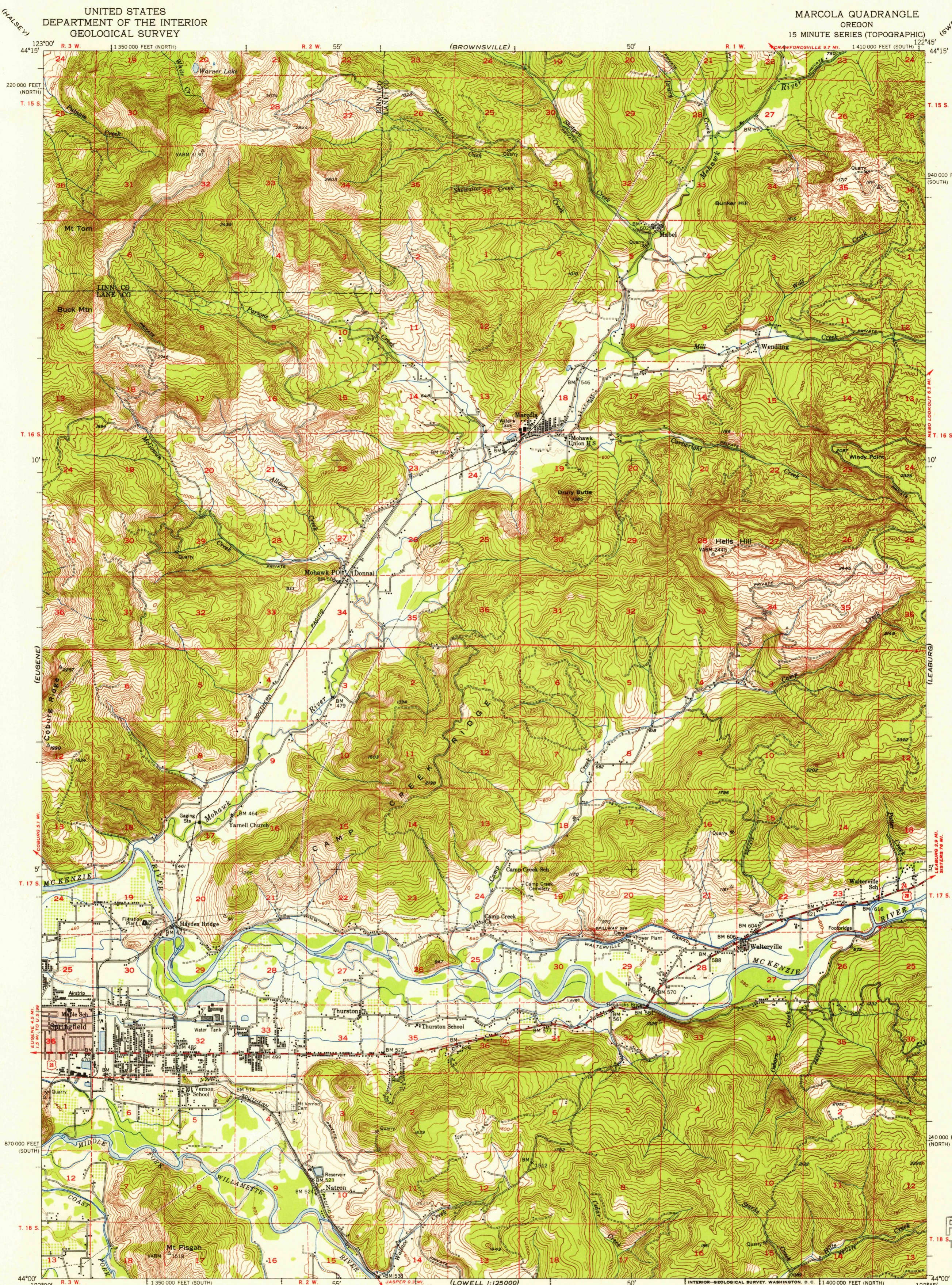
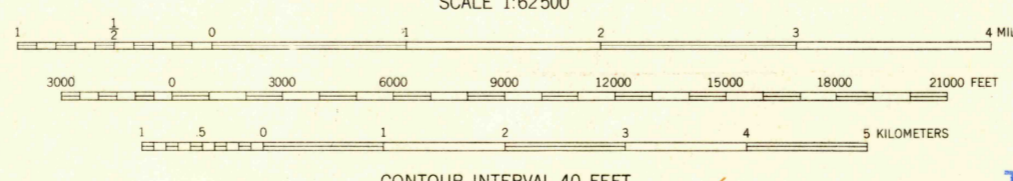


U.S.G.S.  
FILE COPY  
TOPOGRAPHIC DIVISION

U.S.G.S.  
FILE COPY  
TOPOGRAPHIC DIVISION



Maped, edited, and published by the Geological Survey  
Control by USGS, USC&GS, and USCE  
Topography from aerial photographs by multiple methods  
Aerial photographs taken 1949. Field check 1950  
Polyconic projection. 1927 North American datum  
10,000-foot grid based on Oregon coordinate system,  
north and south zones  
Red tint indicates area in which only  
landmark buildings are shown  
Dashed land lines indicate approximate location  
Unchecked elevations are shown in brown



ROAD CLASSIFICATION

Heavy-duty	—+—+—+—+—+—+—+—+—+—	Light-duty	—+—+—+—+—+—+—+—+—+—
Medium-duty	—+—+—+—+—+—+—+—+—+—	Unimproved dirt	-----
U. S. Route	□	State Route	○

CONTOUR INTERVAL 40 FEET  
DOTTED LINES REPRESENT HALF-INTERVAL CONTOURS  
DATUM IS MEAN SEA LEVEL

THIS MAP COMPLIES WITH NATIONAL MAP ACCURACY STANDARDS  
FOR SALE BY U. S. GEOLOGICAL SURVEY, FEDERAL CENTER, DENVER, COLORADO OR WASHINGTON 25, D. C.  
A FOLDER DESCRIBING TOPOGRAPHIC MAPS AND SYMBOLS IS AVAILABLE ON REQUEST

MARCOLA, OREG.  
N4400-W12245/15

1950

JUL 14 1955

6225