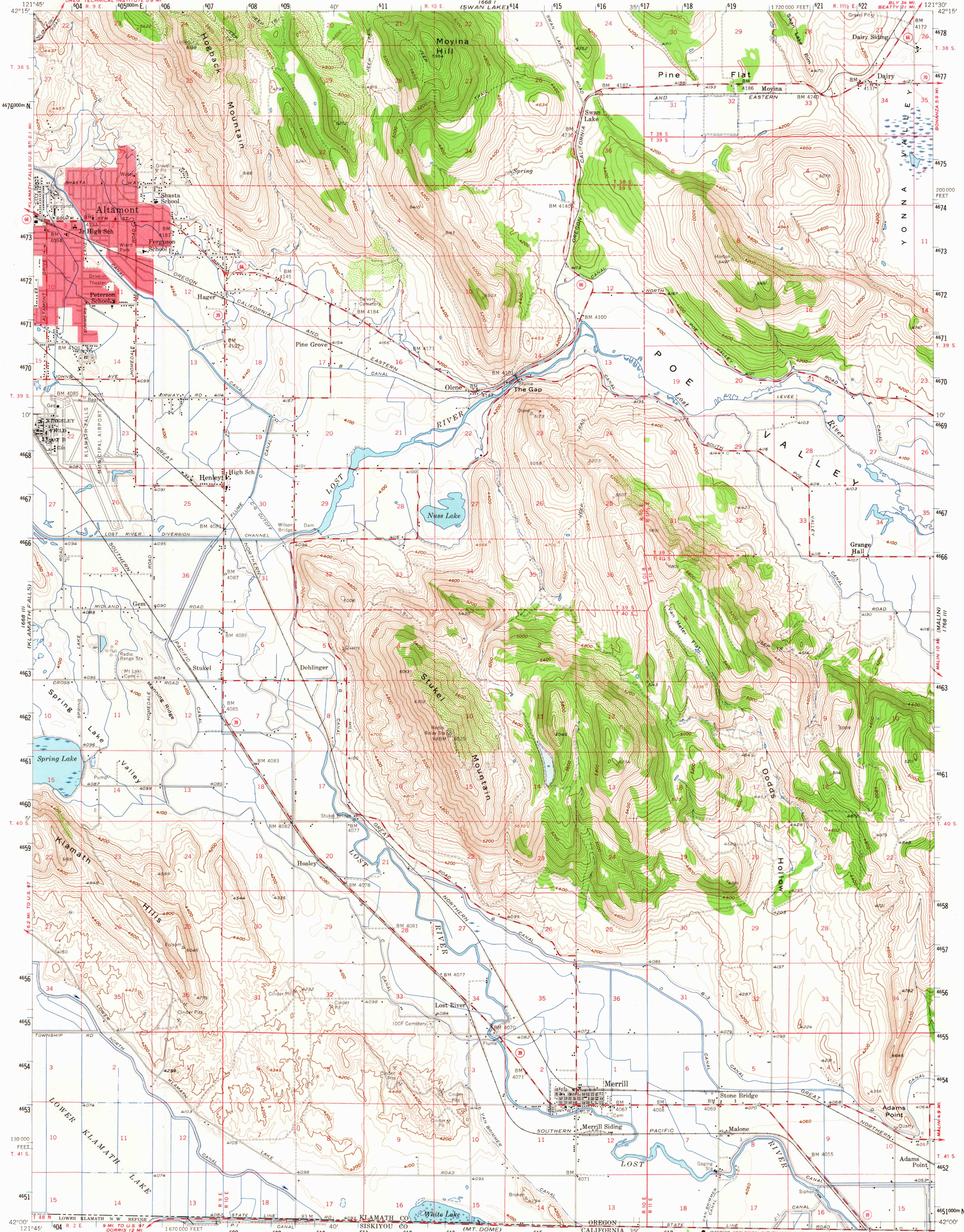
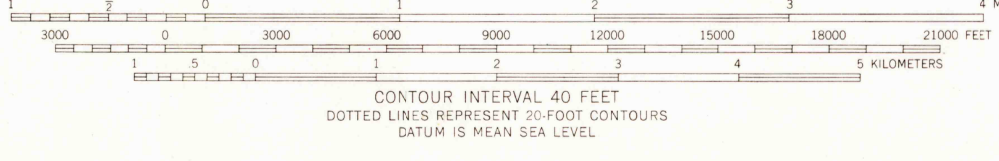
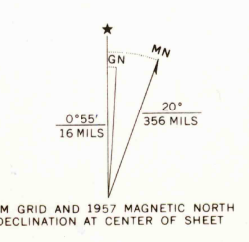


UNITED STATES  
DEPARTMENT OF THE INTERIOR  
GEOLOGICAL SURVEY

MERRILL QUADRANGLE  
OREGON-CALIFORNIA  
15 MINUTE SERIES (TOPOGRAPHIC)



Mapped, edited, and published by the Geological Survey  
Control by USGS and USC&GS  
Topography from aerial photographs by photogrammetric methods and by plane-table surveys 1957. Aerial photographs taken 1955  
Polyconic projection, 1927 North American datum  
10,000-foot grid based on Oregon coordinate system, south zone  
1000-meter Universal Transverse Mercator grid ticks, zone 10, shown in blue  
Red tint indicates areas in which only landmark buildings are shown  
Dashed land lines indicate approximate locations  
Land lines unsurveyed in portion of T. 48 N., R. 2 E.  
Unchecked elevations are shown in brown



Historical File  
Topographic Division Medium duty

ROAD CLASSIFICATION

- Light duty
- Unimproved dirt
- State Route



THIS MAP COMPLIES WITH NATIONAL MAP ACCURACY STANDARDS  
FOR SALE BY U. S. GEOLOGICAL SURVEY, DENVER, COLORADO 80225, OR WASHINGTON, D. C. 20242  
A FOLDER DESCRIBING TOPOGRAPHIC MAPS AND SYMBOLS IS AVAILABLE ON REQUEST

MERRILL, OREG.-CALIF.  
N4200-W12130/15  
1957

AMS 1668 II-SERIES V792

U.S.G.S.  
FILE COPY  
TOPOGRAPHIC DIVISION

DEC 17 1965

4190