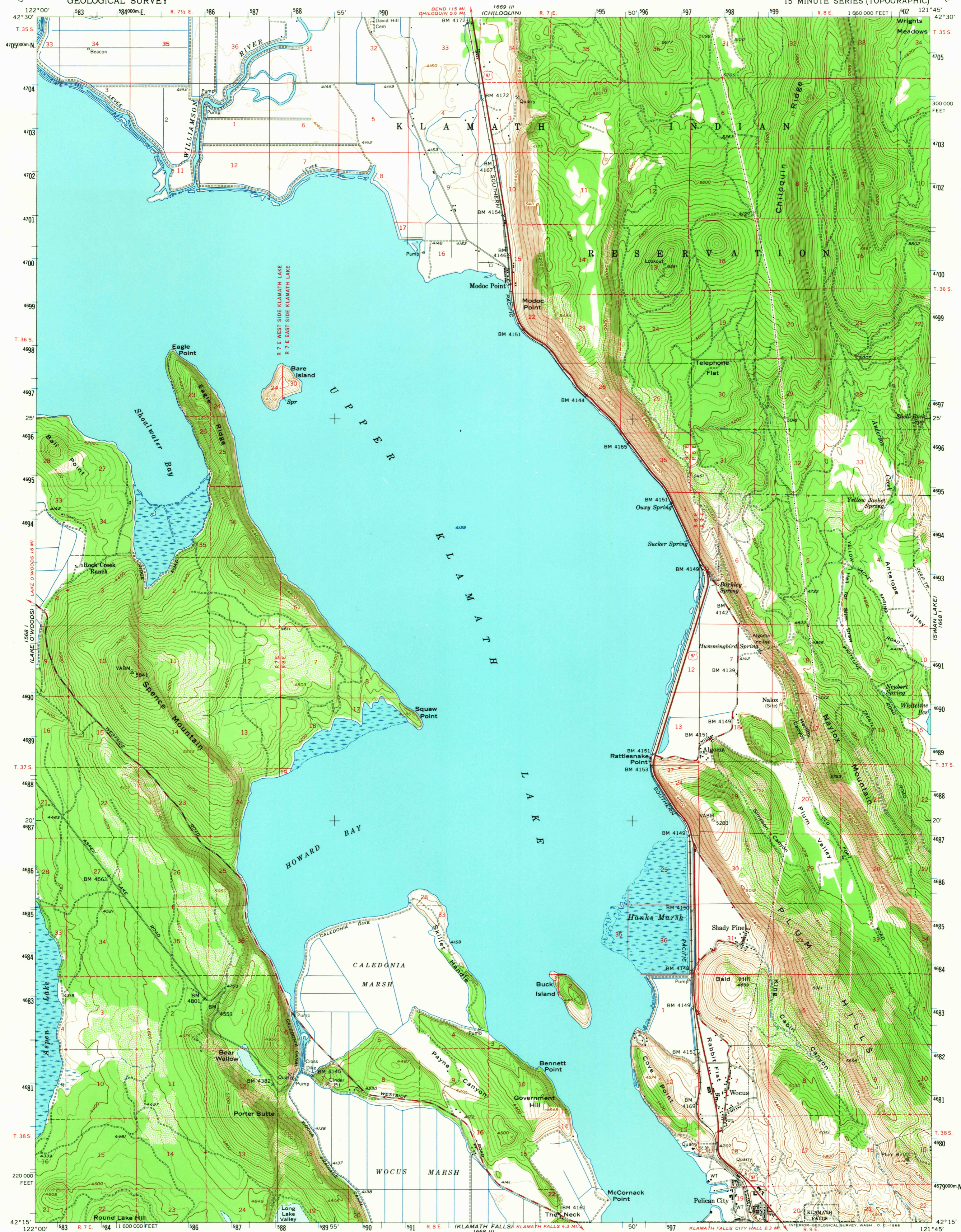
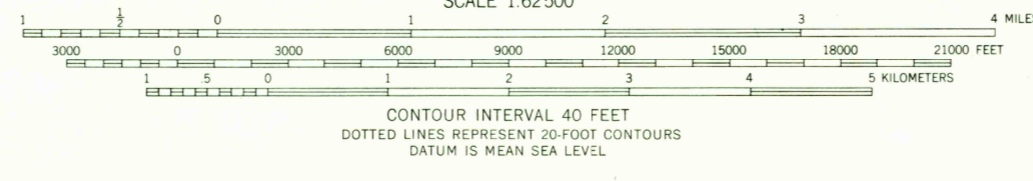
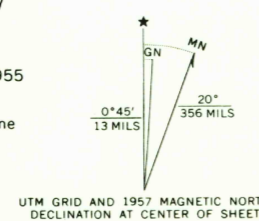


(PELICAN BUTTE)
1569 III

(CALIMUS BUTTE)
1668 I



Mapped, edited, and published by the Geological Survey
Control by USGS and USC&GS
Topography from aerial photographs by ER-55 plotter
and by planetable surveys 1957. Aerial photographs taken 1955
Polyconic projection. 1927 North American datum
10,000-foot grid based on Oregon coordinate system, south zone
1000-meter Universal Transverse Mercator grid ticks,
zone 10, shown in blue
Dashed land lines indicate approximate locations
Unchecked elevations are shown in brown



ROAD CLASSIFICATION

- Heavy-duty
- Medium-duty
- Light-duty
- Unimproved dirt
- U.S. Route

USCS
Historical File
Topographic Division



THIS MAP COMPLIES WITH NATIONAL MAP ACCURACY STANDARDS
FOR SALE BY U. S. GEOLOGICAL SURVEY, DENVER, COLORADO 80225 OR WASHINGTON, D. C. 20242
A FOLDER DESCRIBING TOPOGRAPHIC MAPS AND SYMBOLS IS AVAILABLE ON REQUEST

U.S.G.S.
FIVE COPY
TOPOGRAPHIC DIVISION

5000
AUG 12 1956