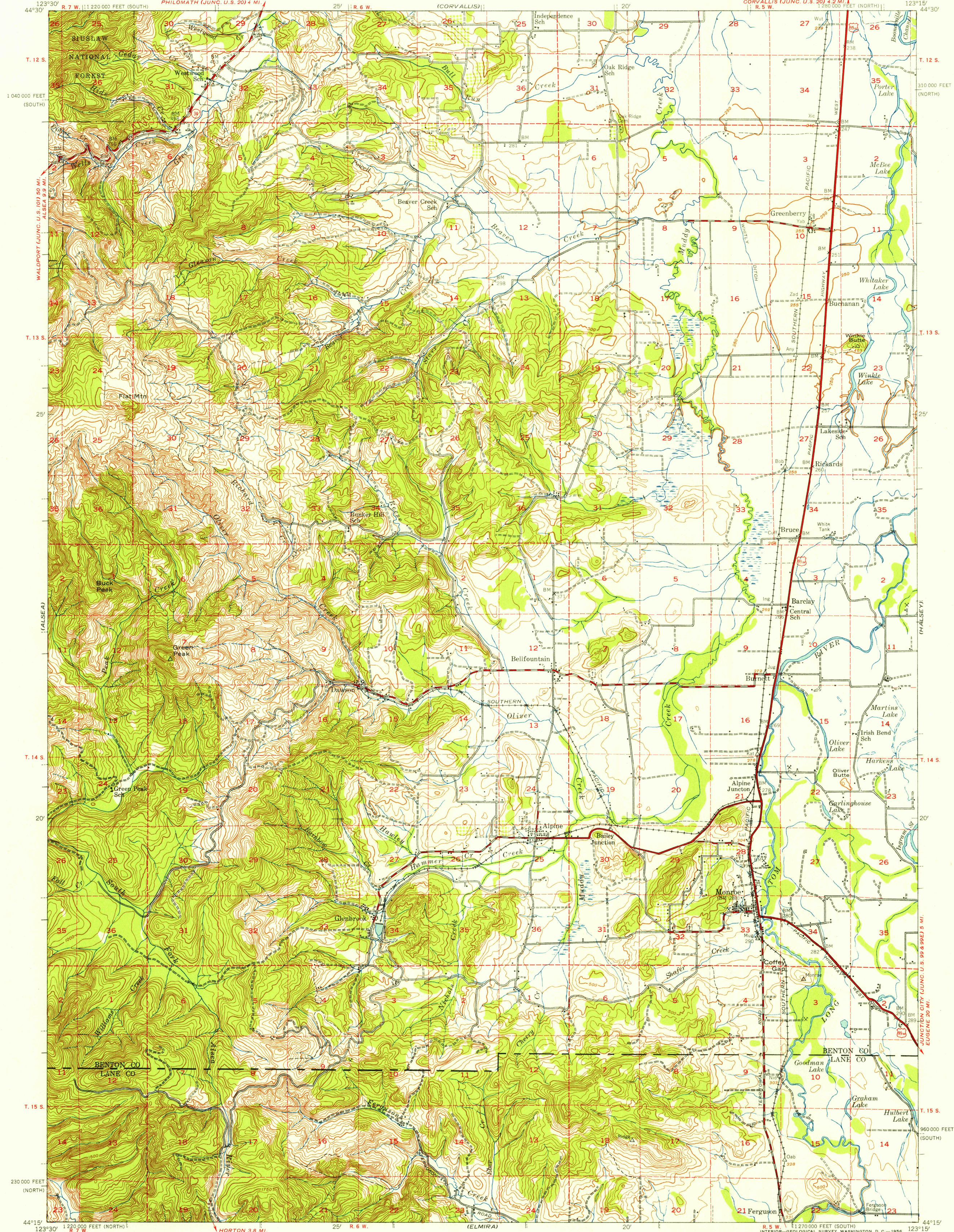
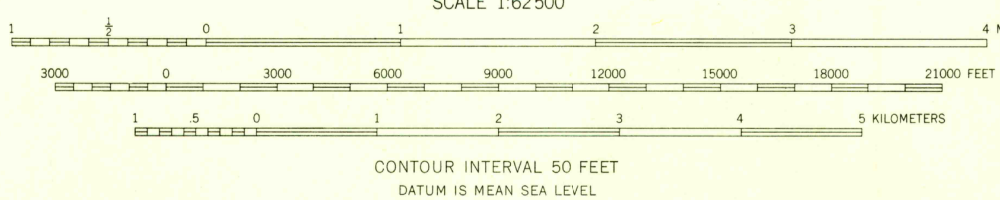
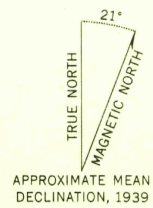


U.S.G.S.  
FILE COPY  
TOPOGRAPHIC DIVISION



Mapped by the Army Map Service  
Published for civil use by the Geological Survey  
Control by USC&GS, USGS, and USCE  
Topography from aerial photographs by stereophotogrammetric  
methods. Aerial photographs taken 1939  
Polyconic projection. 1927 North American datum  
10,000-foot grids based on Oregon coordinate system,  
north and south zones  
Dashed land lines indicate approximate locations  
No distinction is made between barns, dwellings,  
commercial and industrial buildings  
Unchecked elevations are shown in brown



ROAD CLASSIFICATION 1942  
Heavy-duty ——— Light-duty ———  
Medium-duty ——— Unimproved dirt ———  
U.S. Route (circle with number) State Route (circle with number)



USGS  
Historical File  
Topographic Division  
MONROE, OREG.  
N4415-W12315/15  
1939

U.S.G.S.  
FILE COPY  
TOPOGRAPHIC DIVISION

MAR 23 1956  
1115