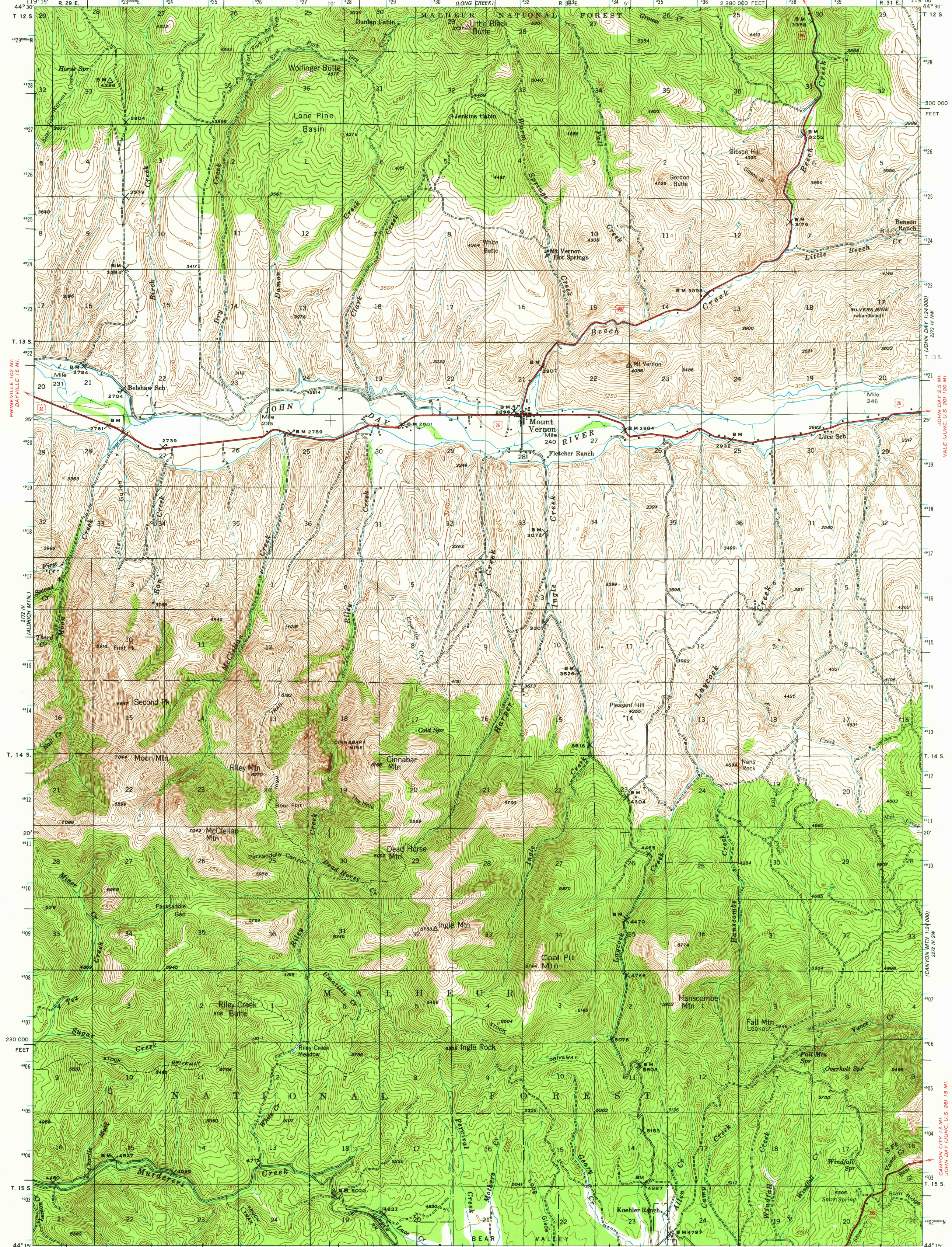


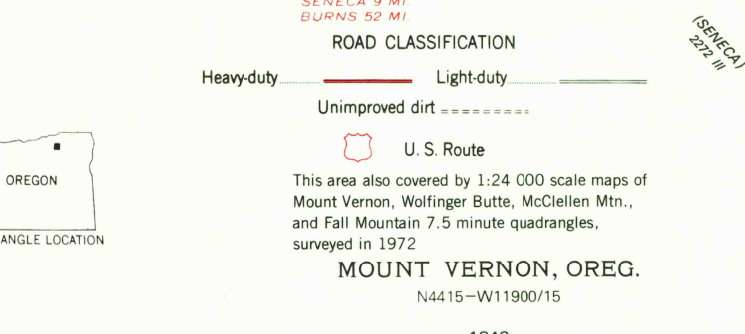
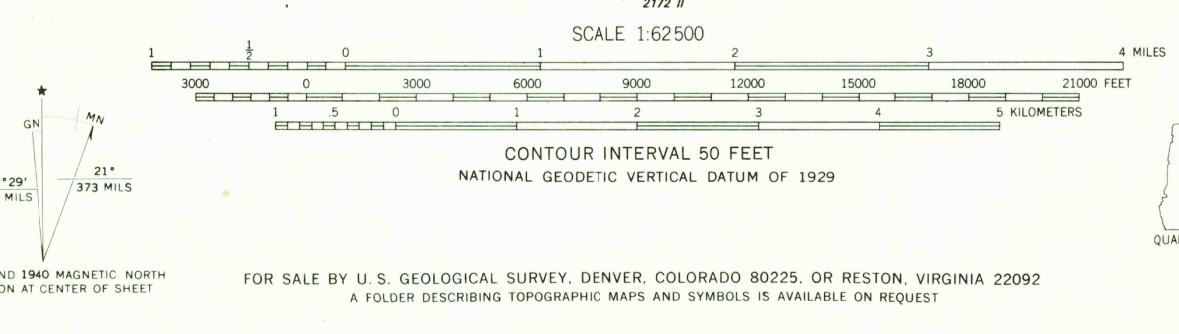
119° 15' R. 29 E. 123 124 125 126 127 128 129 130 131 132 133 134 135 136 137 138 139 119° 00' 44° 30' T. 12 S. 29 28 27 26 25 24 23 22 21 20 19 18 17 16 15 14 13 12 11 10 09 08 07 06 05 04 03 02 01 119° 15' R. 29 E. 123 124 125 126 127 128 129 130 131 132 133 134 135 136 137 138 139 119° 00' 44° 30' T. 12 S. 29 28 27 26 25 24 23 22 21 20 19 18 17 16 15 14 13 12 11 10 09 08 07 06 05 04 03 02 01

UNITED STATES  
DEPARTMENT OF THE INTERIOR  
GEOLOGICAL SURVEY

88 MI. TO ORE. 74  
704 14 MI.  
MOUNT VERNON QUADRANGLE  
OREGON—GRANT CO  
15 MINUTE SERIES (TOPOGRAPHIC)



Mapped, edited, and published by the Geological Survey  
Control by USGS, NOS/NOAA  
Topography by planetable methods 1939/40  
Polyconic projection. 1927 North American Datum  
10,000-foot grid based on Oregon (North)  
rectangular coordinate system  
1000-meter Universal Transverse Mercator grid ticks,  
zone 11, shown in blue  
To place on the predicted North American Datum 1983,  
move the projection lines 18 meters north and  
85 meters east  
There may be private inholdings within the boundaries of  
the National or State reservations shown on this map



FOR SALE BY U. S. GEOLOGICAL SURVEY, DENVER, COLORADO 80225, OR RESTON, VIRGINIA 22092  
A FOLDER DESCRIBING TOPOGRAPHIC MAPS AND SYMBOLS IS AVAILABLE ON REQUEST

SENeca 9 MI  
BURNS 52 MI  
This area also covered by 1:24 000 scale maps of  
Mount Vernon, Wolfinger Butte, McClellan Mtn.,  
and Fall Mountain 7.5 minute quadrangles,  
surveyed in 1972

MOUNT VERNON, OREG.  
N4415-W11900/15

1940  
DMA 2172 I—SERIES V792