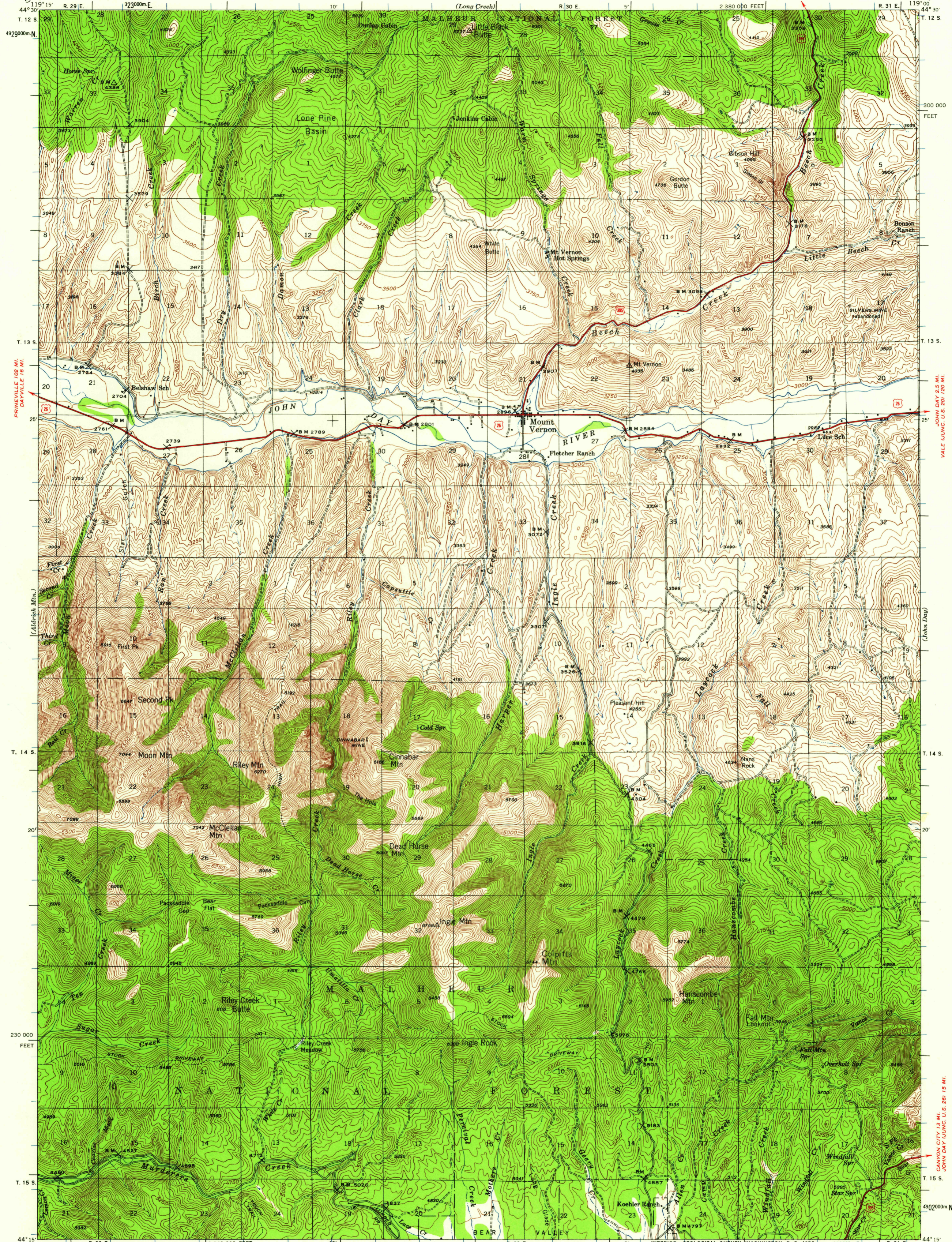


UNITED STATES
DEPARTMENT OF THE INTERIOR
GEOLOGICAL SURVEY

88 MI. TO ORE. 74
FOX 14 MI.
MOUNT VERNON QUADRANGLE
OREGON—GRANT CO
15 MINUTE SERIES (TOPOGRAPHIC)



4929000m N
T. 12 S.
T. 13 S.
T. 14 S.
T. 15 S.
4920000m N

300 000
FEET
300 000
FEET
300 000
FEET
4920000m N

119° 15' R. 29 E. 119° 00' R. 30 E. 119° 00' R. 31 E. 119° 00'

Topography R. R. Monbeck, E. S. Rickard, F. A. Wuopio,
J. G. Collins, J. H. Fredricks, B. F. Martin, Ernest Blessing,
and P. E. Sandoz, Jr.
Surveyed in 1939-1940

ROAD CLASSIFICATION
Heavy-duty ——— Light-duty ———
Unimproved dirt - - - - -
U.S. Route

APPROXIMATE MEAN
DECLINATION, 1940

SCALE 1:62,500
1 2 3 4 MILES
3000 6000 9000 12000 15000 18000 21000 FEET
1 2 3 4 5 KILOMETERS

CONTOUR INTERVAL 50 FEET
DATUM IS MEAN SEA LEVEL

UCSS
Historical File
Topographic Division

SENECA 9 MI.
BURNS 52 MI.

MOUNT VERNON, OREG.
N 4415—W 11900/15

1940

FOR SALE BY U.S. GEOLOGICAL SURVEY, DENVER 25, COLORADO OR WASHINGTON 25, D. C.
A FOLDER DESCRIBING TOPOGRAPHIC MAPS AND SYMBOLS IS AVAILABLE ON REQUEST

U.S.G.S.
FILE COPY
TOPOGRAPHIC DIVISION

AUG 26 1959

2046