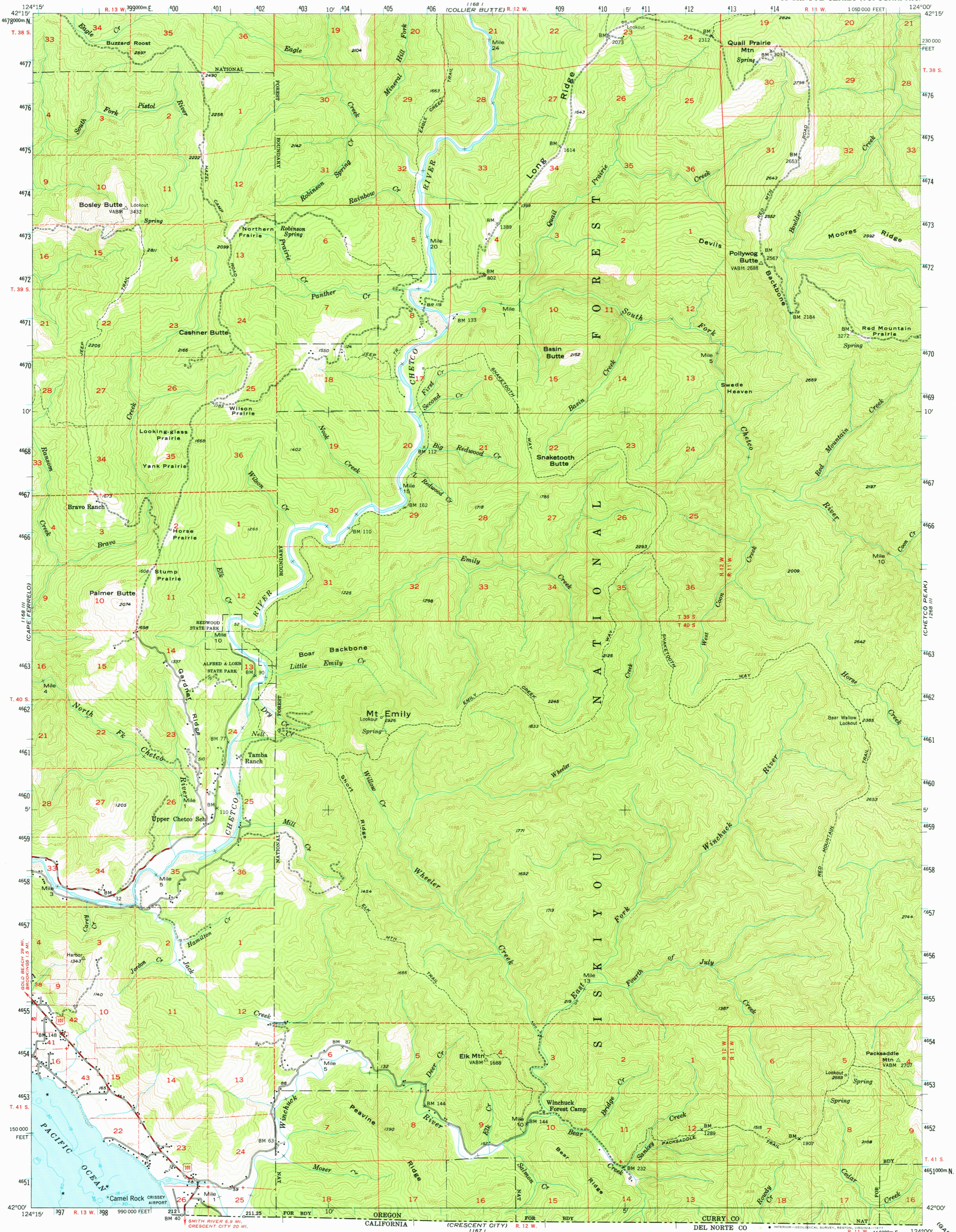
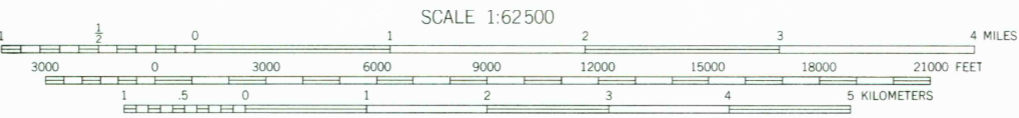
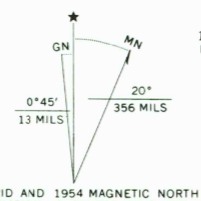


UNITED STATES  
DEPARTMENT OF THE INTERIOR  
GEOLOGICAL SURVEY

MT. EMILY QUADRANGLE  
OREGON—CURRY CO.  
15 MINUTE SERIES (TOPOGRAPHIC)



Mapped, edited, and published by the Geological Survey  
Control by USGS and USC&GS  
Topography from aerial photographs by multiplex methods  
Aerial photographs taken 1952. Field check 1954  
Hydrography compiled from USC&GS Chart 5896 (1951)  
Polyconic projection. 1927 North American datum  
10,000-foot grid based on Oregon coordinate system, south zone  
Dashed land lines indicate approximate locations  
Unchecked elevations are shown in brown  
1000-meter Universal Transverse Mercator grid ticks,  
zone 10, shown in blue



CONTOUR INTERVAL 80 FEET  
NATIONAL GEODETIC VERTICAL DATUM OF 1929  
DEPTH CURVES IN FEET—DATUM IS MEAN LOWER LOW WATER  
SHORELINE SHOWN REPRESENTS THE APPROXIMATE LINE OF MEAN HIGH WATER  
THE AVERAGE RANGE OF TIDE IS APPROXIMATELY 5 FEET  
THIS MAP COMPLIES WITH NATIONAL MAP ACCURACY STANDARDS  
FOR SALE BY U. S. GEOLOGICAL SURVEY, DENVER, COLORADO 80225, OR RESTON, VIRGINIA 22092  
A FOLDER DESCRIBING TOPOGRAPHIC MAPS AND SYMBOLS IS AVAILABLE ON REQUEST



ROAD CLASSIFICATION  
1964  
Medium-duty — Light-duty  
Unimproved dirt —  
U. S. Route

MT. EMILY, OREG.  
N4200—W12400/15  
1954  
AMS 1168 II—SERIES V792

USGS  
Historical File  
Topographic Division

2800  
DEC 30 1976