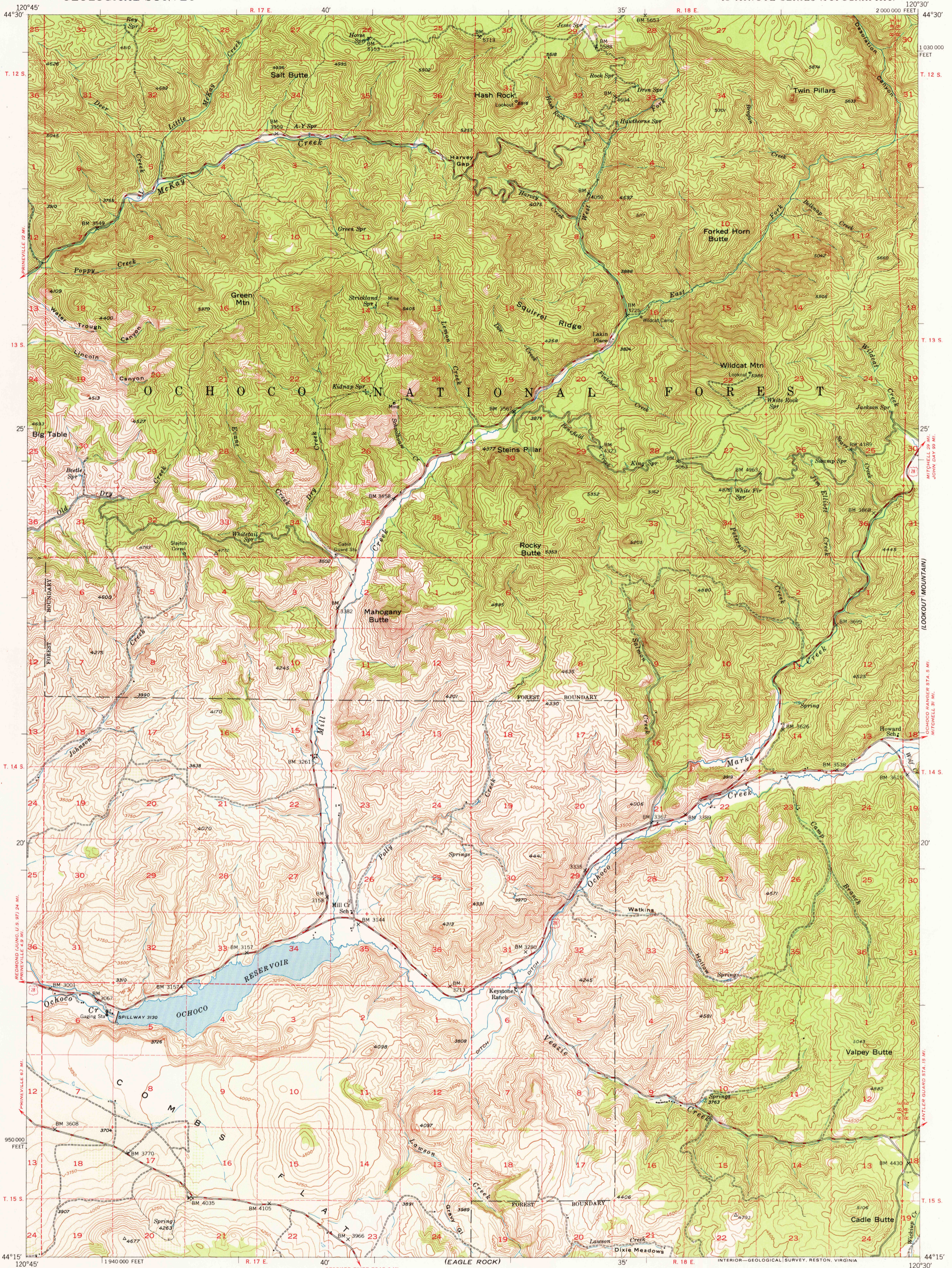
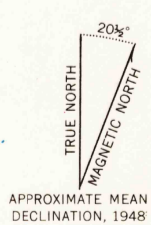


(MITCHELL 1:25000)



Mapped, edited, and published by the Geological Survey
Control by USGS and USC&GS
Topography from aerial photographs by multiplex methods
Aerial photographs taken 1943. Field check 1948
Polyconic projection. 1927 North American datum
10,000-foot grid based on Oregon coordinate system,
south zone
Dashed land lines indicate approximate location



CONTOUR INTERVAL 50 FEET
DATUM IS MEAN SEA LEVEL

ROAD CLASSIFICATION
HARD-SURFACE ALL WEATHER ROADS DRY WEATHER ROADS
Heavy-duty 4 LANE 6 LANE Improved dirt
Medium-duty 4 LANE 6 LANE Unimproved dirt
Loose-surface, graded, or narrow hard-surface
U. S. Route State Route

JUN 2 6 1979

OCHOCO RESERVOIR, OREG.
N4415-W12030/15
EDITION OF 1950

THIS MAP COMPLIES WITH NATIONAL MAP ACCURACY STANDARDS
FOR SALE BY U. S. GEOLOGICAL SURVEY, FEDERAL CENTER, DENVER, COLORADO OR WASHINGTON 25, D. C.
A FOLDER DESCRIBING TOPOGRAPHIC MAPS AND SYMBOLS IS AVAILABLE ON REQUEST

USGS
Historical File
Topographic Division

1250