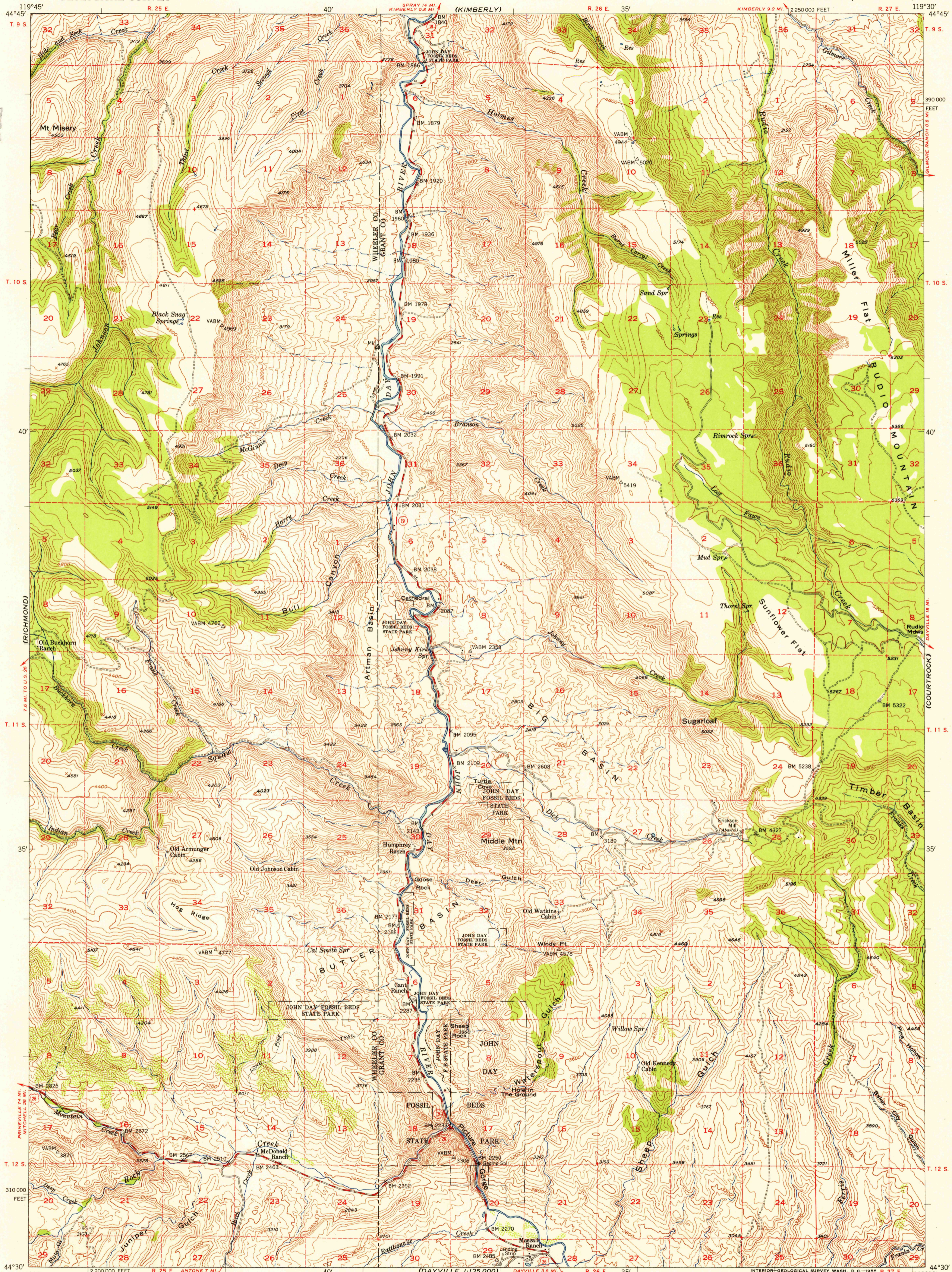


UNITED STATES  
DEPARTMENT OF THE INTERIOR  
GEOLOGICAL SURVEY

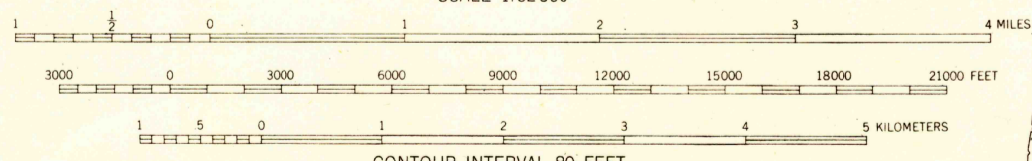
PICTURE GORGE QUADRANGLE  
OREGON  
15 MINUTE SERIES (TOPOGRAPHIC)

U.S.G.S.  
FILE COPY  
TOPOGRAPHIC DIVISION

U.S.G.S.  
FILE COPY  
TOPOGRAPHIC DIVISION



Maped, edited, and published by the Geological Survey  
Control by USGS and USC&GS  
Topography from aerial photographs by multiplex methods  
Aerial photographs taken 1946. Field check 1953  
Polyconic projection. 1927 North American datum  
10,000-foot grid based on Oregon coordinate system, north zone  
Dashed land lines indicate approximate locations



ROAD CLASSIFICATION

Heavy-duty	4 LANE 16 LANE	Light-duty
Medium-duty	4 LANE 16 LANE	Unimproved dirt

U. S. Route  
State Route



U.S.G.S.  
Historical File  
Topographic Division  
PICTURE GORGE, OREG.  
N4430-W11930/15  
1953

THIS MAP COMPLIES WITH NATIONAL MAP ACCURACY STANDARDS  
FOR SALE BY U. S. GEOLOGICAL SURVEY, FEDERAL CENTER, DENVER, COLORADO OR WASHINGTON 25, D. C.  
A FOLDER DESCRIBING TOPOGRAPHIC MAPS AND SYMBOLS IS AVAILABLE ON REQUEST

AUG 2 1955

2070