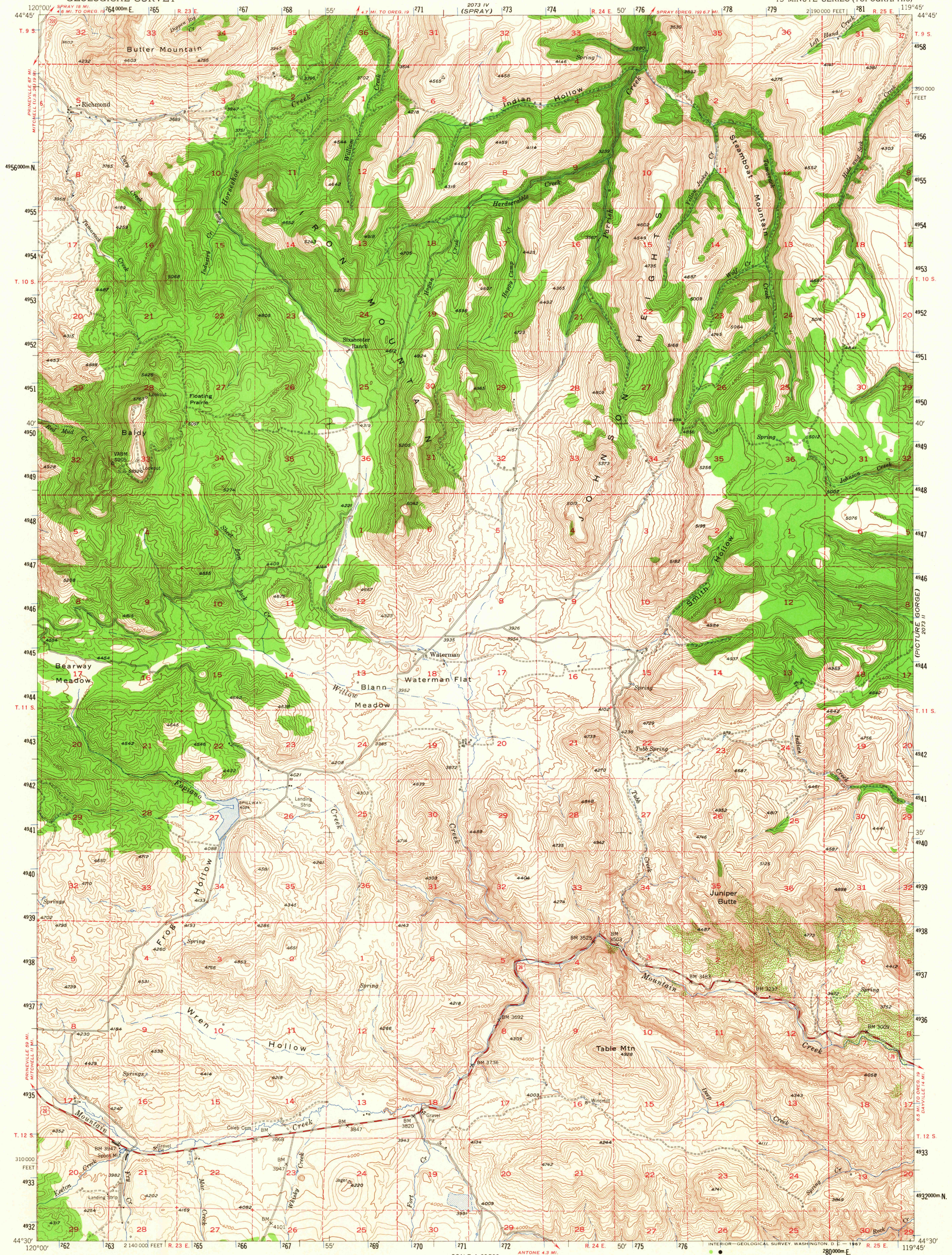
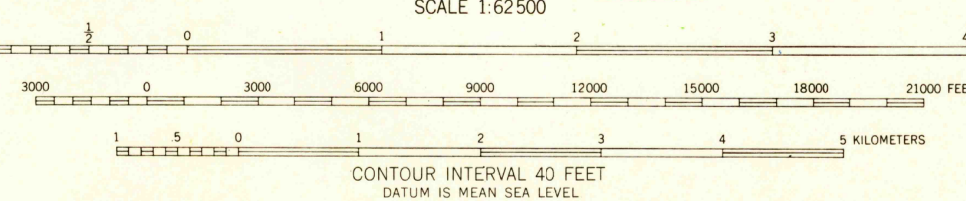
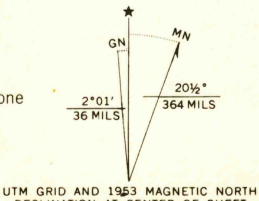


2023 I
(KIMBERLY)



Mapped, edited, and published by the Geological Survey
Control by USGS and USC&GS
Topography from aerial photographs by multiplex methods
Aerial photographs taken 1946. Field check 1953
Polyconic projection. 1927 North American datum
10,000-foot grid based on Oregon coordinate system, north zone
Dashed land lines indicate approximate locations
1000-meter Universal Transverse Mercator grid ticks,
zone 11, shown in blue



ROAD CLASSIFICATION

Heavy duty	Light-duty
Design duty	Unimproved dirt
U. S. Route	State Route

U.S.G.S. TOPOGRAPHIC DIVISION
RICHMOND, OREG. N4430-W1945/15
1953
AMS 2073 III—SERIES V792

2200
AUG 10 1967

THIS MAP COMPLIES WITH NATIONAL MAP ACCURACY STANDARDS
FOR SALE BY U. S. GEOLOGICAL SURVEY, DENVER, COLORADO 80225 OR WASHINGTON, D. C. 20242
A FOLDER DESCRIBING TOPOGRAPHIC MAPS AND SYMBOLS IS AVAILABLE ON REQUEST