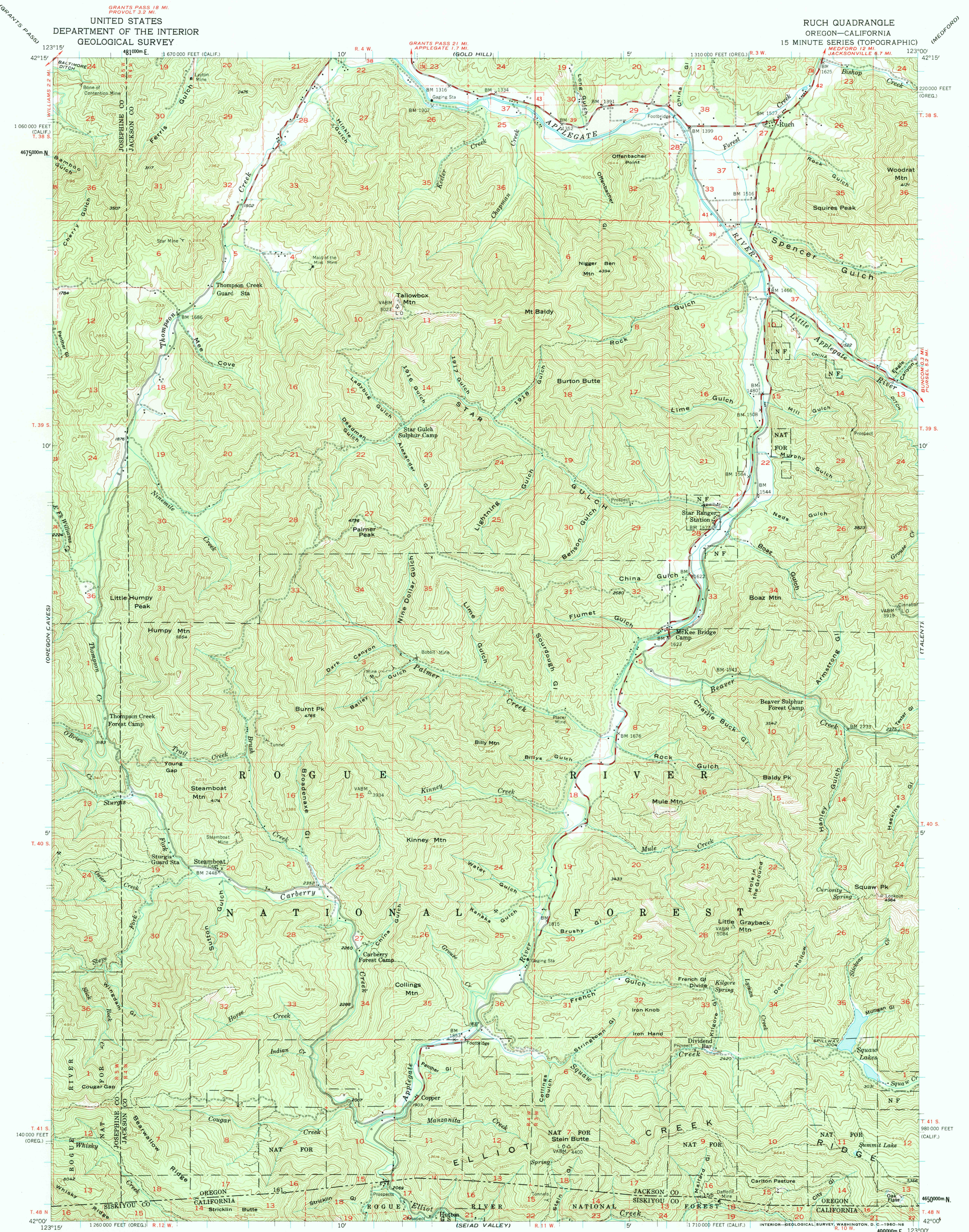


UNITED STATES
DEPARTMENT OF THE INTERIOR
GEOLOGICAL SURVEY

RUCH QUADRANGLE
OREGON—CALIFORNIA
15 MINUTE SERIES (TOPOGRAPHIC)



Mapped, edited, and published by the Geological Survey

Control by USGS, USC&GS, and State of Oregon

Topography from aerial photographs by multiplex methods

Aerial photographs taken 1951-52. Field check 1954

Polyconic projection. 1927 North American datum

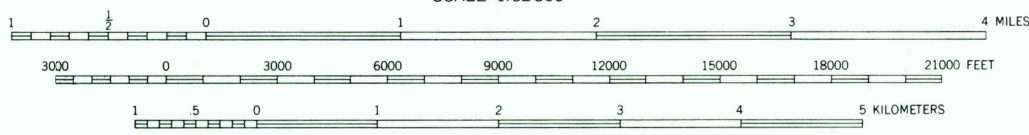
10,000-foot grids based on Oregon coordinate system, south zone

and California coordinate system, zone 1

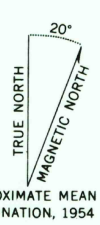
1000-meter Universal Transverse Mercator grid ticks, zone 10, shown in blue

Dashed land lines indicate approximate locations

Unchecked elevations are shown in brown



CONTOUR INTERVAL 80 FEET
DATUM IS MEAN SEA LEVEL



APPROXIMATE MEAN
DECLINATION, 1954



ROAD CLASSIFICATION

Medium-duty ——— Light-duty ———

Unimproved dirt ———

State Route ———

RUCH, OREG.—CALIF.
N 4200—W 12300/15

1954

THIS MAP COMPLIES WITH NATIONAL MAP ACCURACY STANDARDS
FOR SALE BY U. S. GEOLOGICAL SURVEY, DENVER 25, COLORADO OR WASHINGTON 25, D. C.
A FOLDER DESCRIBING TOPOGRAPHIC MAPS AND SYMBOLS IS AVAILABLE ON REQUEST