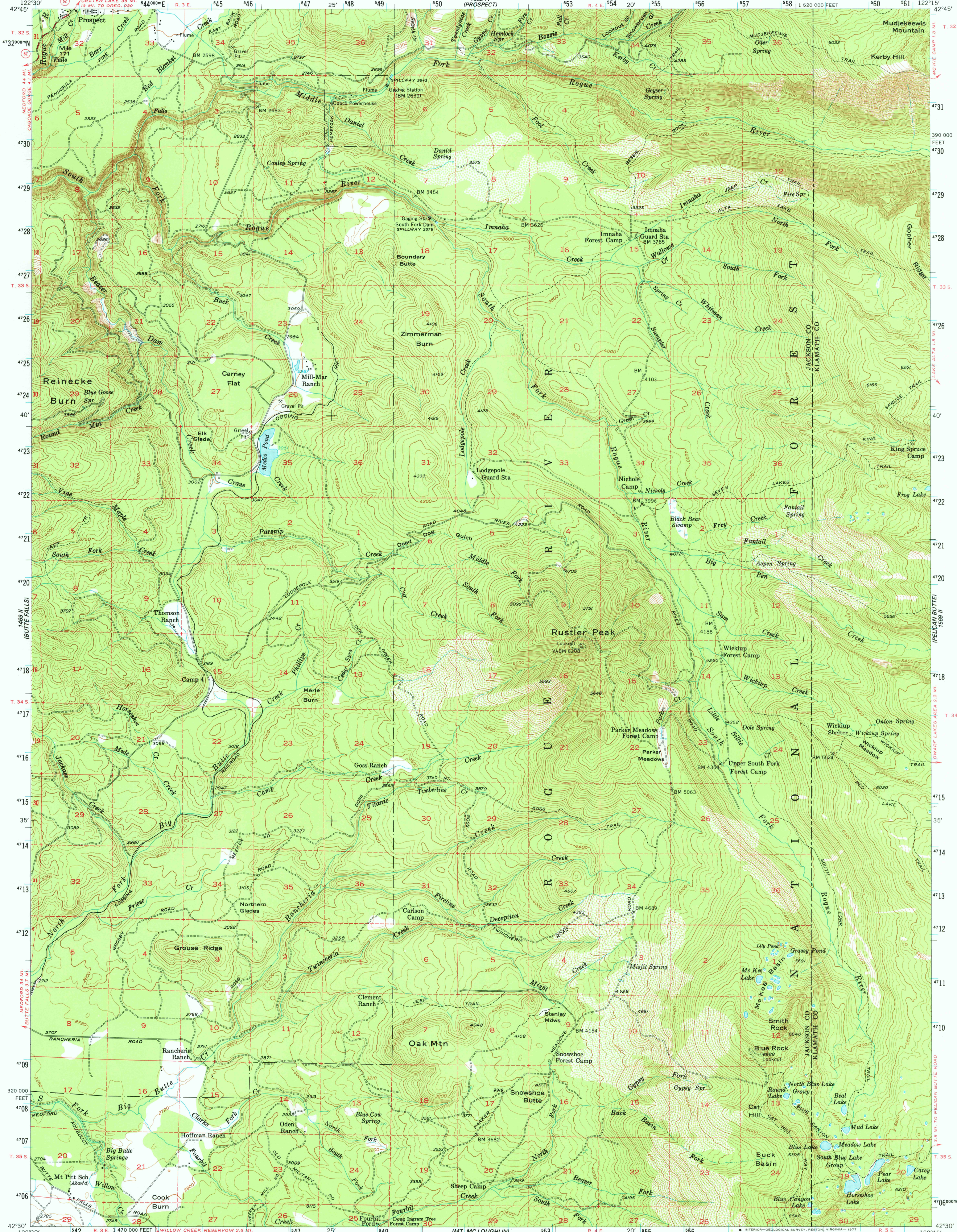


1489 I (LASEY BUTTE)

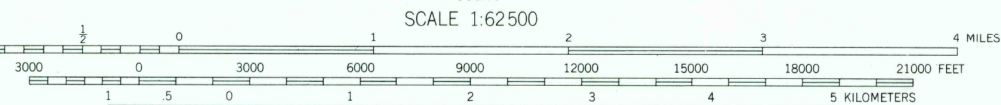
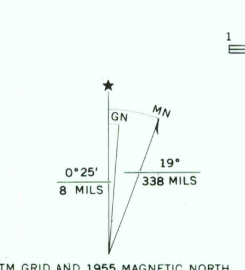
UNITED STATES DEPARTMENT OF THE INTERIOR GEOLOGICAL SURVEY

RUSTLER PEAK QUADRANGLE OREGON 15 MINUTE SERIES (TOPOGRAPHIC)

CRATER LAKE NATIONAL PARK AND VICINITY 1589 I



Mapped, edited, and published by the Geological Survey
Control by USGS and USC&GS
Topography from aerial photographs by multiplex methods
Aerial photographs taken 1953. Field check 1955
Polyconic projection, 1927 North American datum
10,000-foot grid based on Oregon coordinate system, south zone
Dashed land lines indicate approximate locations
Unchecked elevations are shown in brown
1000-meter Universal Transverse Mercator grid ticks,
zone 10, shown in blue



CONTOUR INTERVAL 40 FEET
NATIONAL GEODETIC VERTICAL DATUM OF 1929



ROAD CLASSIFICATION
Medium-duty — Light-duty —
Unimproved dirt — State Route

RUSTLER PEAK, OREG.
N4230-W12215/15

FOR SALE BY U.S. GEOLOGICAL SURVEY, DENVER, COLORADO 80225, OR RESTON, VIRGINIA 22092
A FOLDER DESCRIBING TOPOGRAPHIC MAPS AND SYMBOLS IS AVAILABLE ON REQUEST

USGS
Historical File
Topographic Division

AMS 1569 III—SERIES V792

APR 13 197

3750