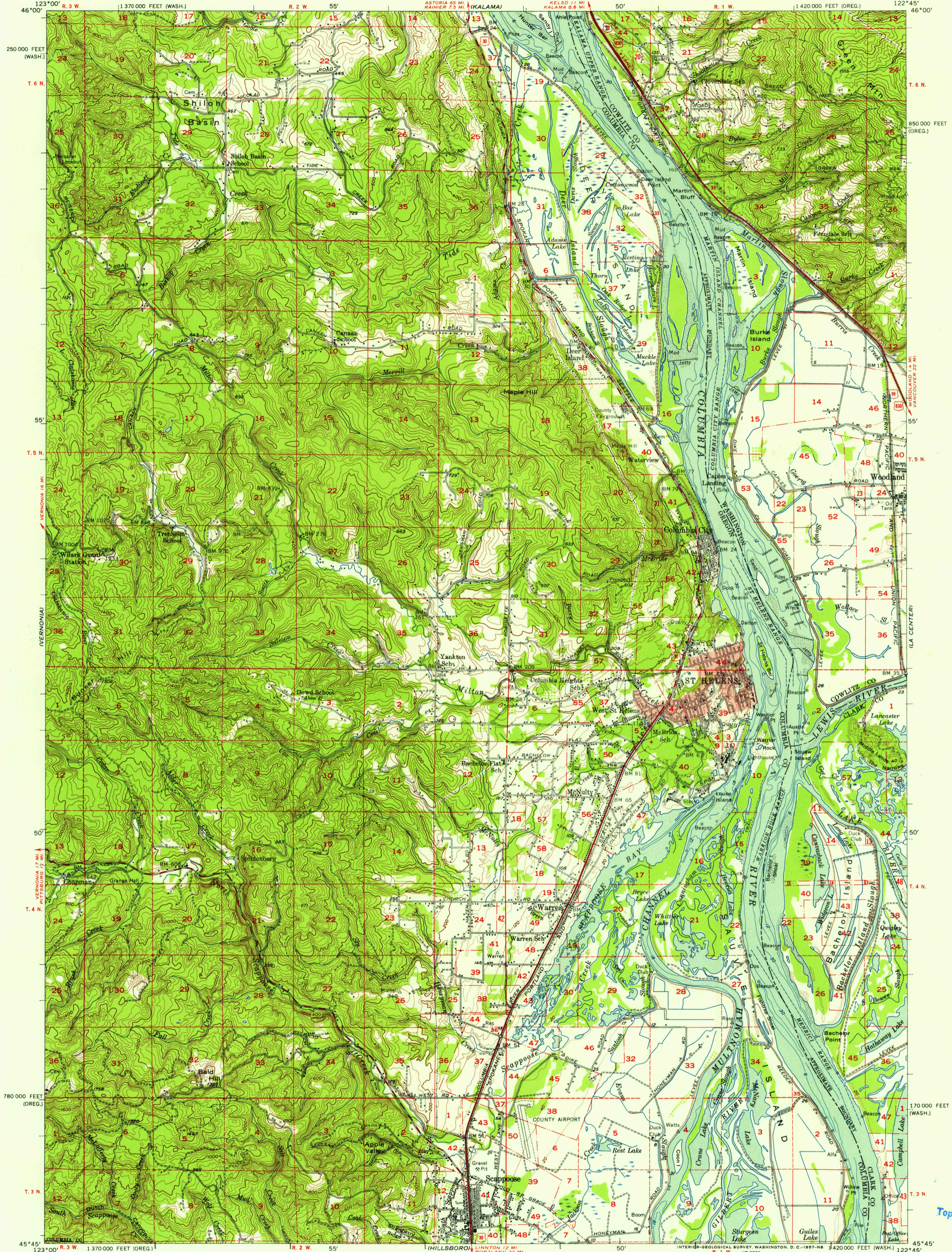
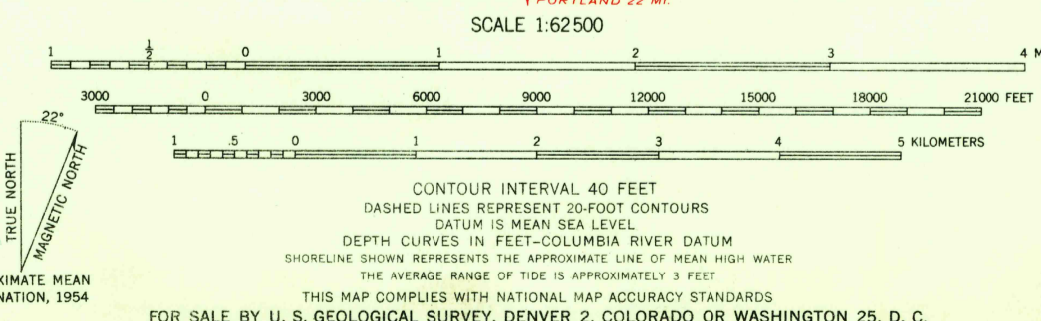


UNITED STATES  
DEPARTMENT OF THE INTERIOR  
GEOLOGICAL SURVEY

ST. HELENS QUADRANGLE  
OREGON-WASHINGTON  
15 MINUTE SERIES (TOPOGRAPHIC)



Mapped, edited, and published by the Geological Survey  
Control by USGS, USC&GS, USCE, and State of Oregon  
Topography from aerial photographs by photogrammetric methods  
and by planetable surveys 1930 and 1954. Aerial photographs taken 1951  
Hydrography compiled from USC&GS charts 6153 (1952) and 6154 (1952)  
Polyconic projection. 1927 North American datum  
10,000-foot grids based on Oregon coordinate system, north zone,  
and Washington coordinate system, south zone  
Red tint indicates areas in which only  
landmark buildings are shown  
Dashed land lines indicate approximate locations



ROAD CLASSIFICATION  
Heavy-duty ——— Light-duty ———  
Medium-duty ——— Unimproved dirt ———  
U.S. Route      State Route  
The east half of this area is also  
covered by 1:24,000 scale maps of  
Deer Island and St. Helens 7.5 minute  
quadrangles, surveyed 1954  
ST. HELENS, OREG.-WASH.  
N4545-W12245/15  
1954

U.S.G.S.  
FILE COPY  
TOPOGRAPHIC DIVISION  
USGS  
Historical File  
Topographic Division

JUN 14 1957

3150