

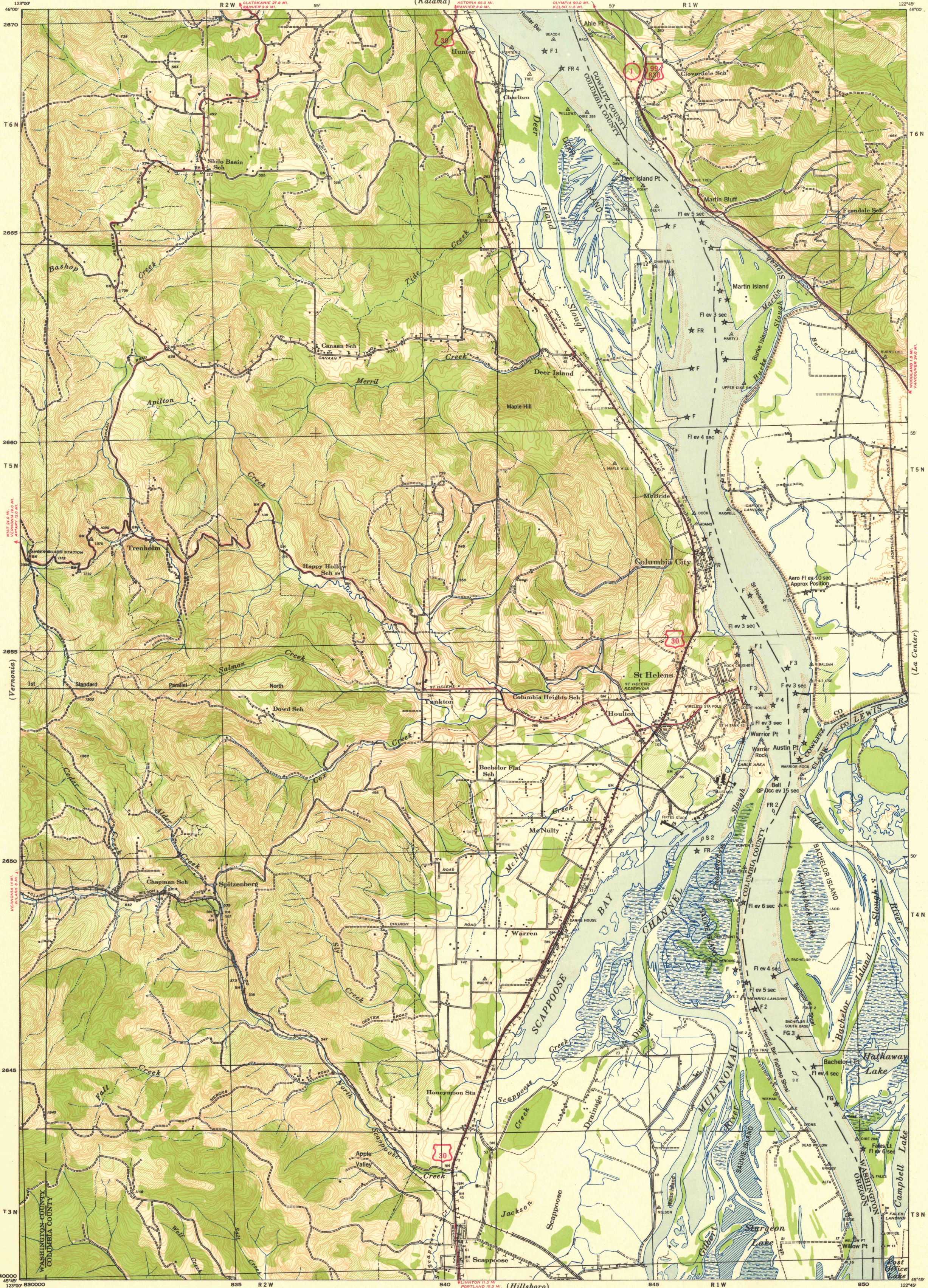
(Clatskanie)

CORPS OF ENGINEERS, U. S. ARMY
TACTICAL MAP

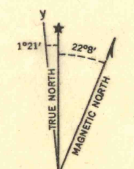
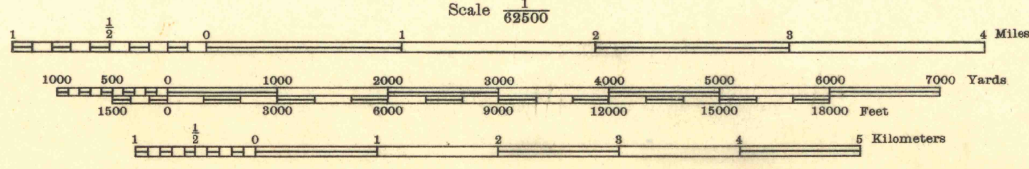
Advance Sheet.
Subject to Correction

OREGON-WASHINGTON
ST. HELENS QUADRANGLE
GRID ZONE "G"

(Pigeon Springs)



Prepared under the direction of the Chief of Engineers,
U. S. Army, 1940.
Horizontal control by U. S. Coast and Geodetic Survey,
1906-12, and vertical control by U. S. Coast and
Geodetic Survey, 1929, U. S. Geological Survey, 1915,
Pep Co., 1926, 29th Engineers, U. S. Army,
1937-38 and Oregon State Highway Dept., 1934.
Topography by 29th Engineers, U. S. Army, 1939, using the
stereo-comparograph (intermediate elevations by multiplex
aero-projector), T-3A (5 lens) aerial photography by 91st
Observation Squadron, Air Corps, U. S. Army, 1937.
Polyconic Projection, North American Datum, 1927.



ROUTES USUALLY TRAVELED
HARD IMPERVIOUS SURFACES
OTHER SURFACE IMPROVEMENTS
U. S. ROUTE
STATE ROUTE

ST. HELENS, OREG.-WASH.
N4545-W12245/15

OREGON

(Gales Creek)

(Portland)

FILE COPY
Map Information Office

Contour interval 95 feet
Datum is mean sea level (1989 adj)
FIVE THOUSAND YARD GRID COMPUTED FROM "GRID SYSTEM FOR PROGRESSIVE MAPS"
BY THE U. S. COAST & GEODETIC SURVEY, SPECIAL PUBLICATION NO. 98
(THE LAST THREE DIGITS OF THE GRID NUMBER ARE OMITTED)

NOTE: OFFICERS USING THIS MAP WILL OBTAIN BETTER RESULTS BY CHECKING WITH THE
IN THE FIELD AND BY NOTIFYING THE CHIEF OF ENGINEERS, WASHINGTON, D. C.

LOGGED OFF