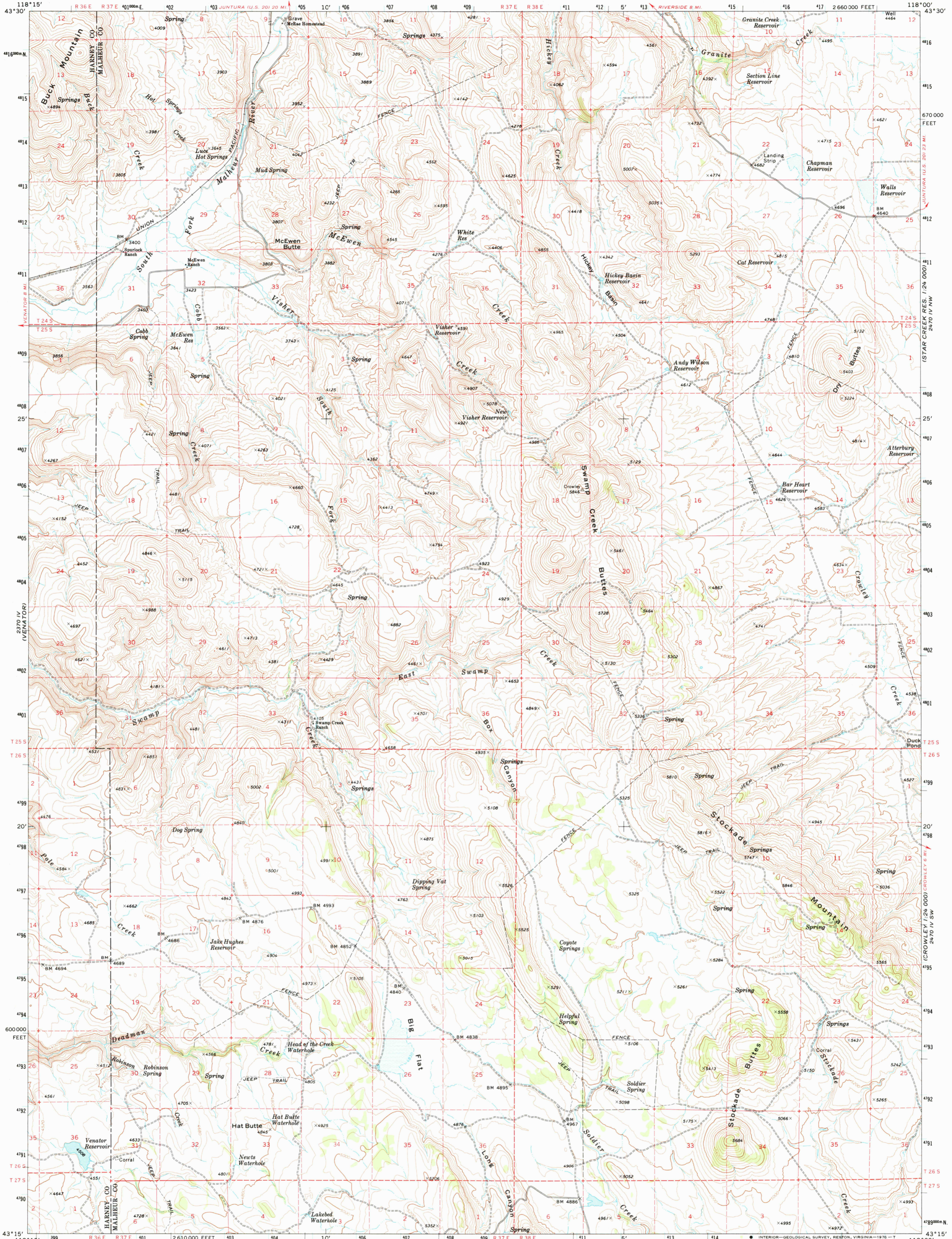
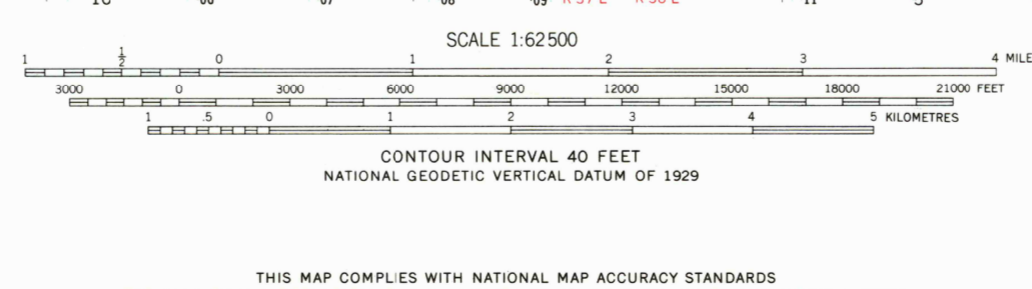
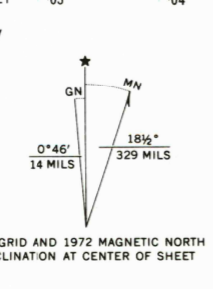


2471 IV SW
1:24,000



Mapped, edited, and published by the Geological Survey
Control by USGS and NOS/NOAA
Topography by photogrammetric methods from aerial
photographs taken 1972. Field checked 1972
Projection and 10,000-foot grid ticks: Oregon coordinate
system, south zone (Lambert conformal conic)
1000-metre Universal Transverse Mercator grid ticks,
zone 11, shown in blue. 1927 North American datum
Certain land lines are omitted because of insufficient data
Areas covered by dashed light-blue pattern
are subject to controlled inundation



ROAD CLASSIFICATION
Primary highway, hard surface
Secondary highway, hard surface
Light duty road, hard or improved surface
Unimproved road
Interstate Route
U. S. Route
State Route



STOCKADE MTN., OREG.
N4315-W11800/15

2471 IV SW
1:24,000